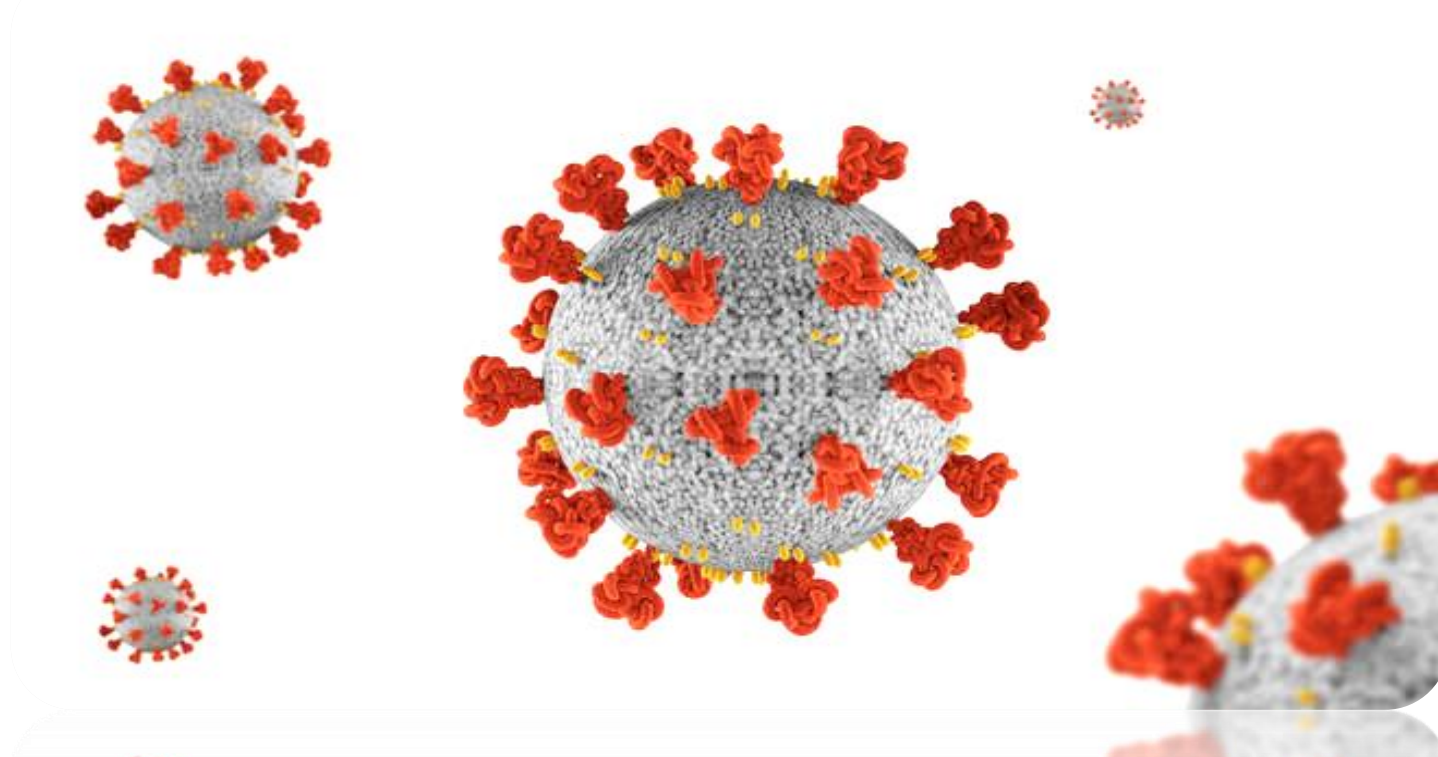
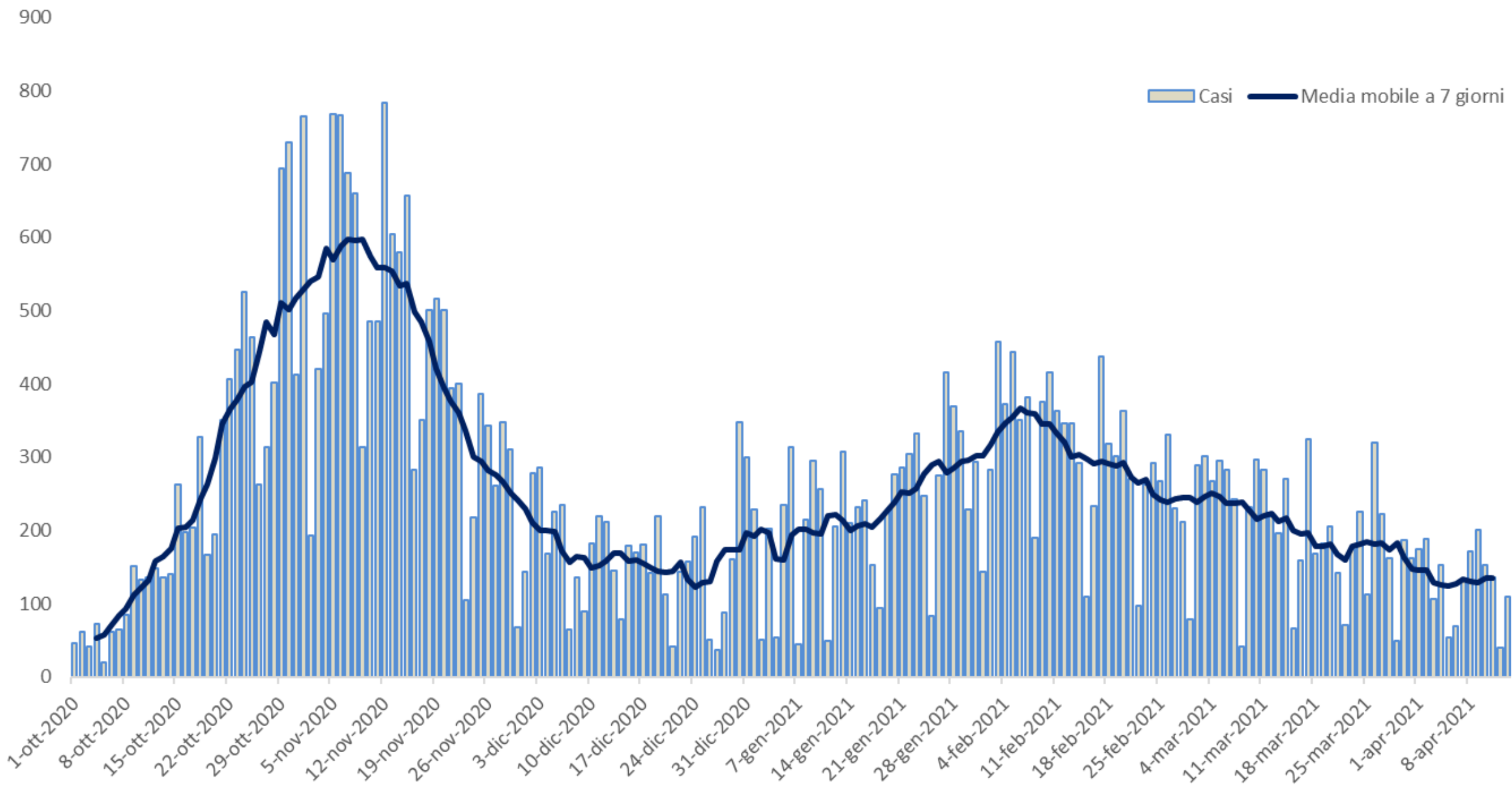


Analisi nucleo epidemiologico Sars- Cov 2 in Umbria

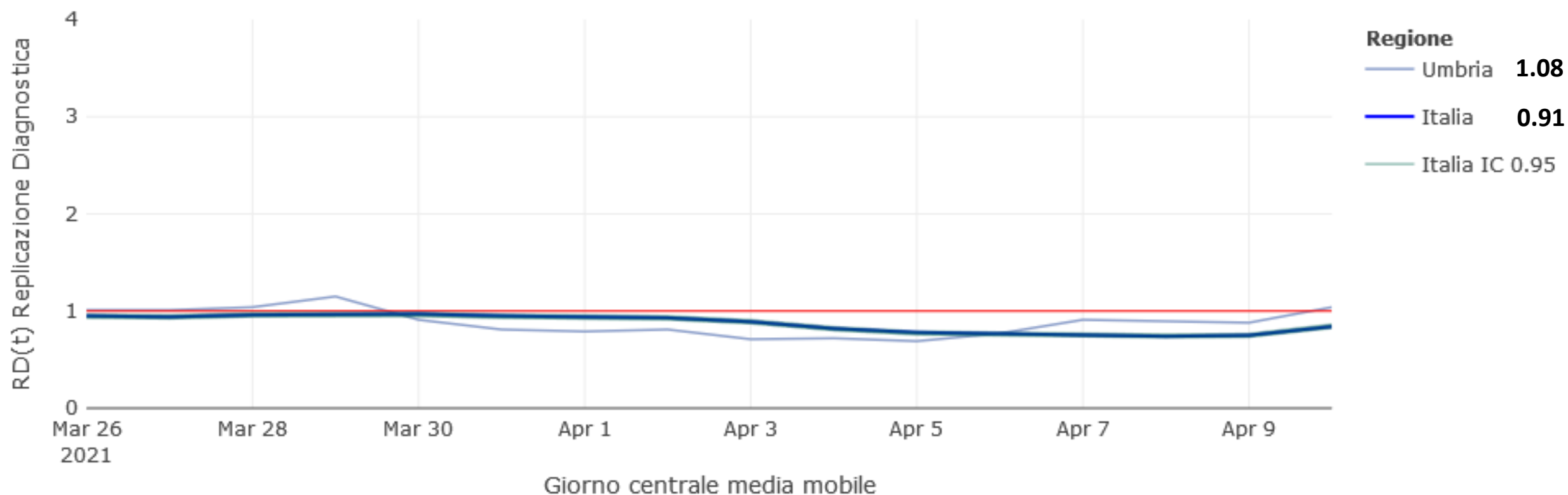


15 aprile 2021

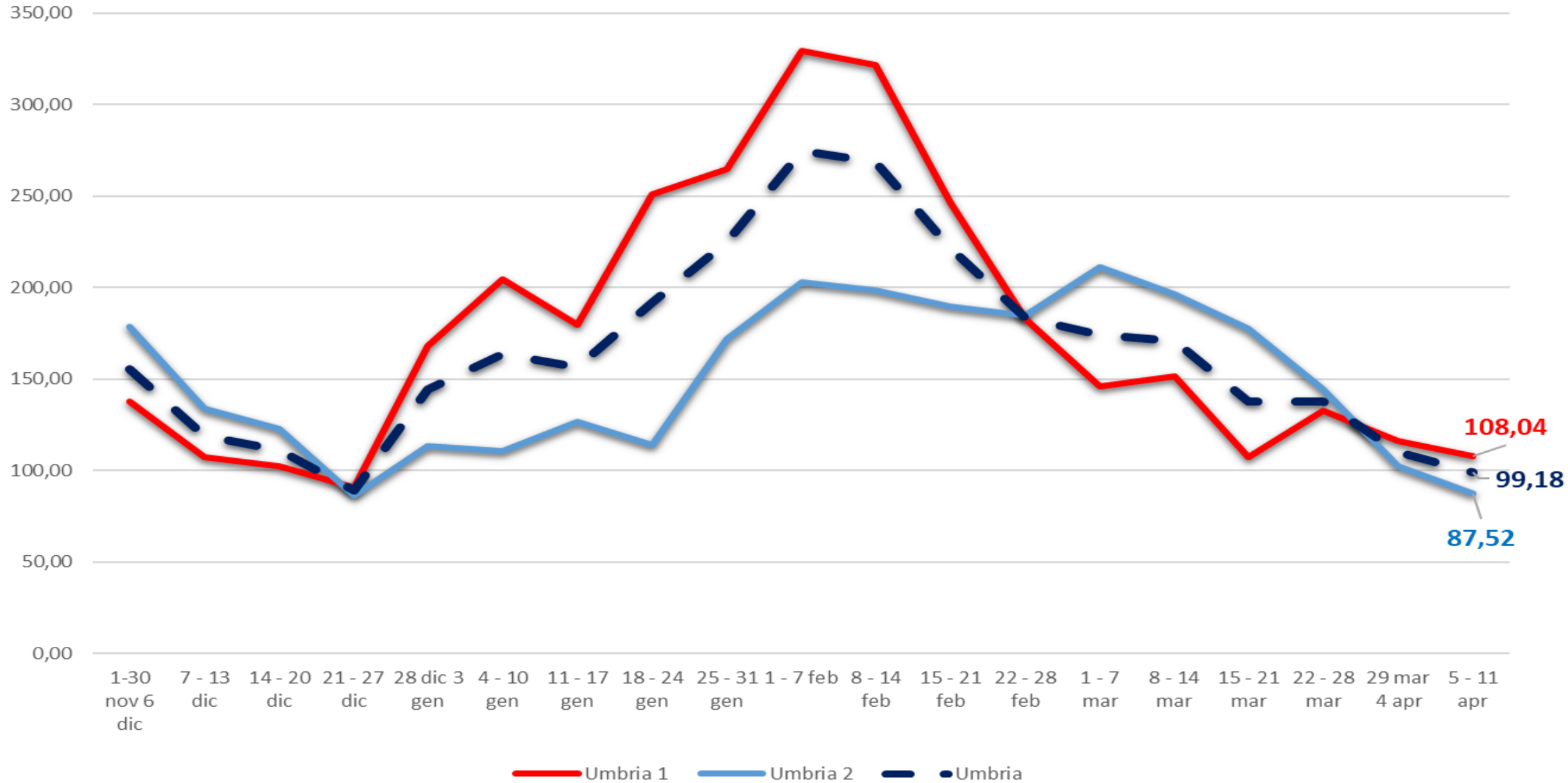
Fonte dati integrata: DB COVID – Umbria Digitale



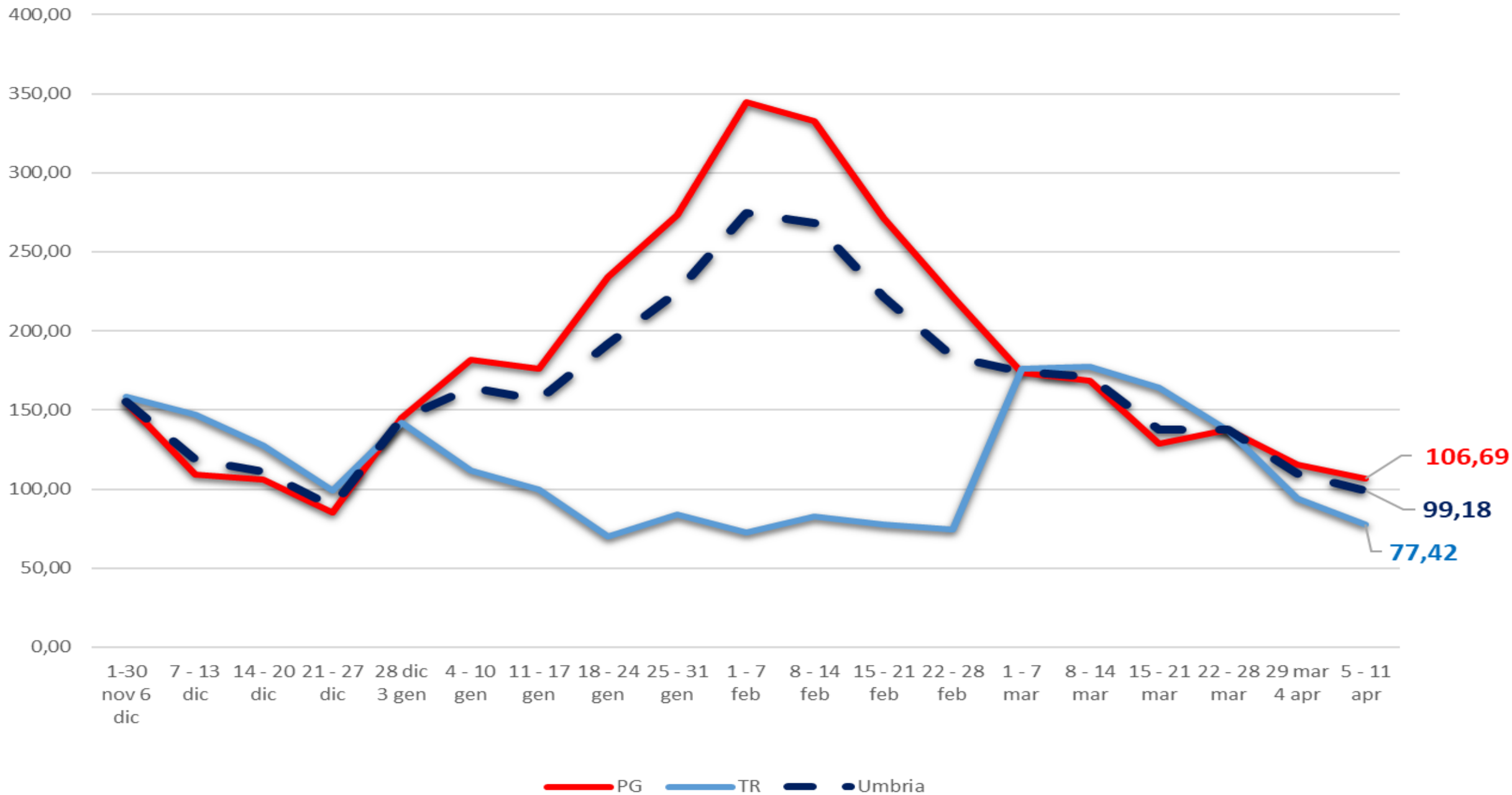
RD(t) Indice di Replicazione Diagnostica a lag 7 giorni (medie mobili a 7 giorni)



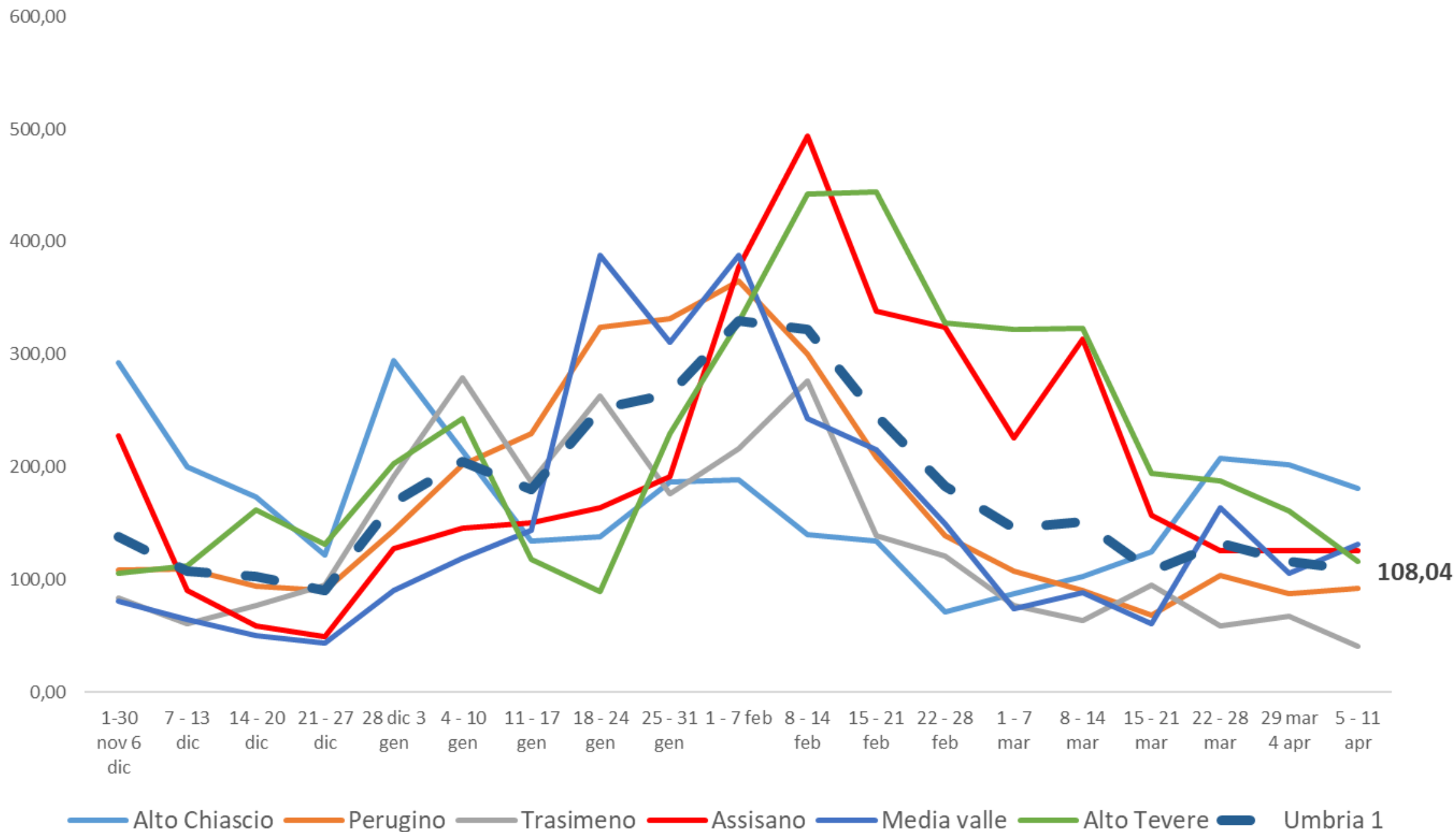
AUSL incidenza per 100.000 abitanti



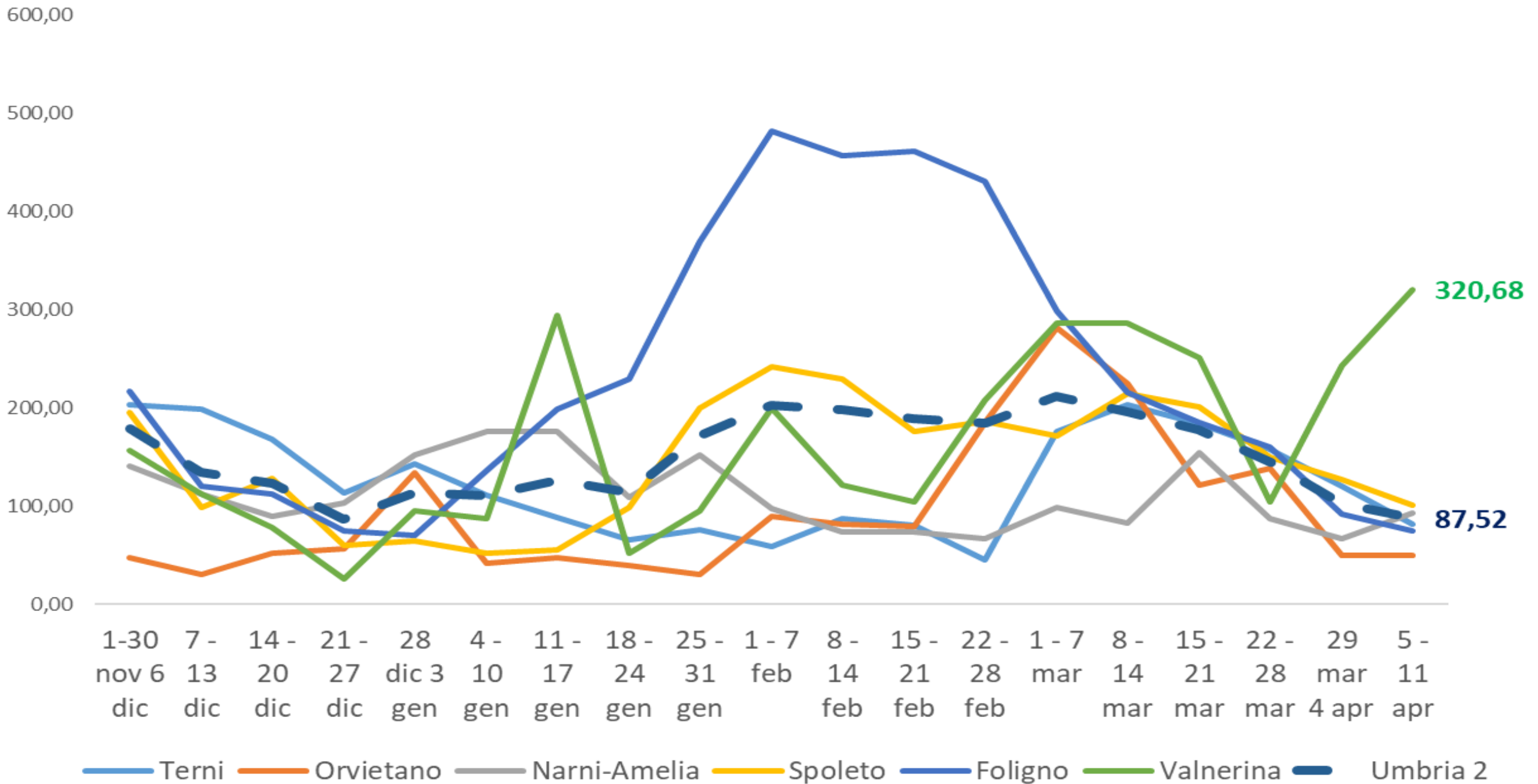
Province incidenza per 100.000 abitanti



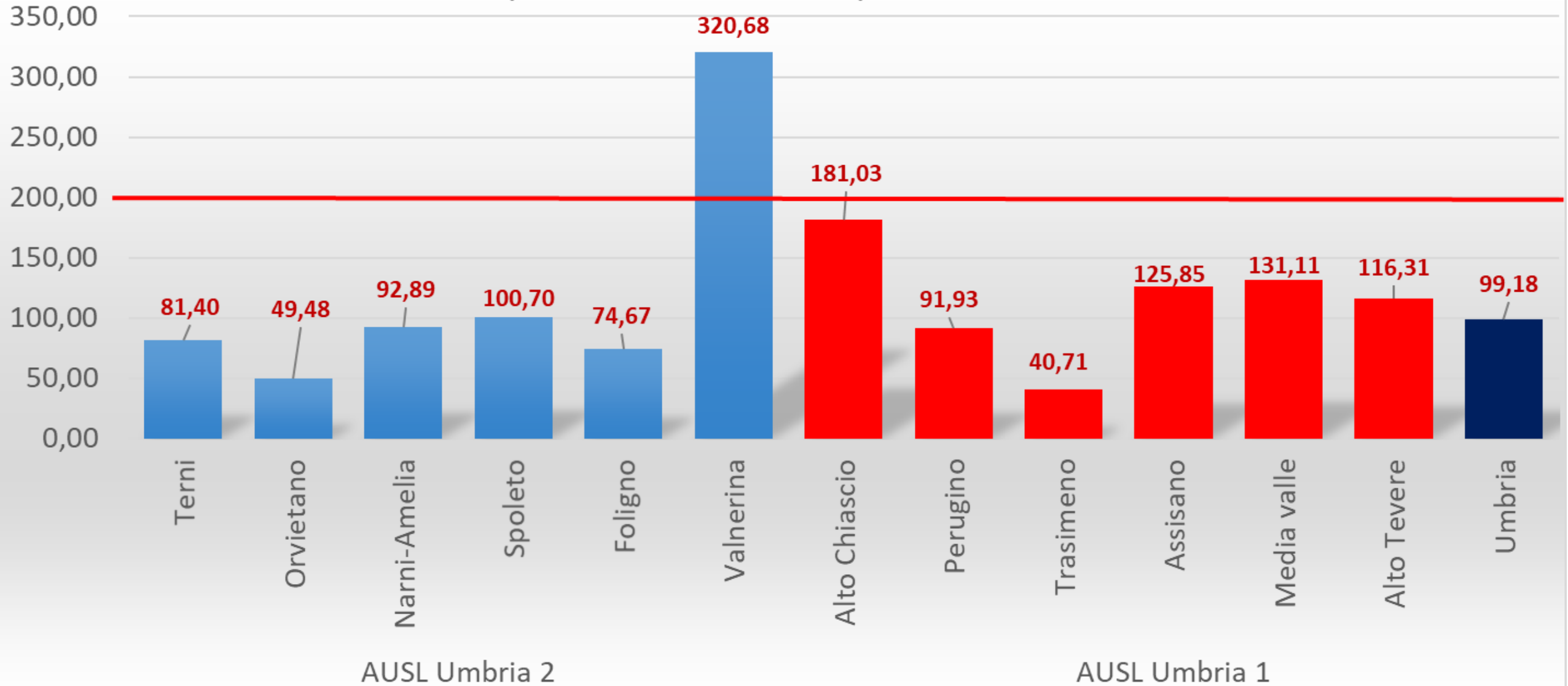
Distretti AUSL Umbria 1 incidenza per 100.000 abitanti

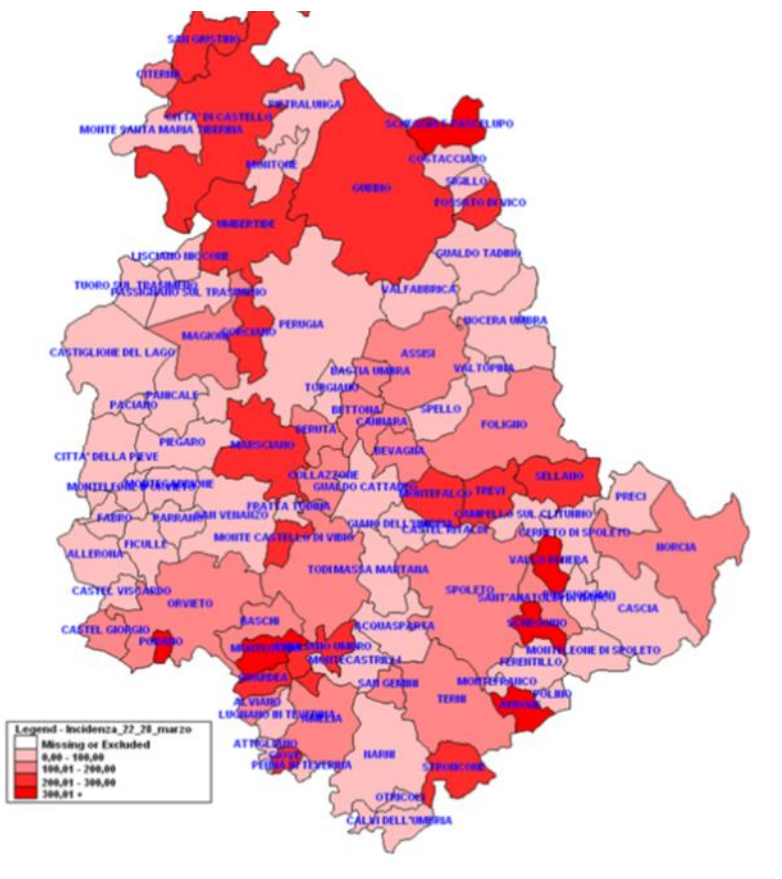


Distretti AUSL Umbria 2 incidenza per 100.000 abitanti

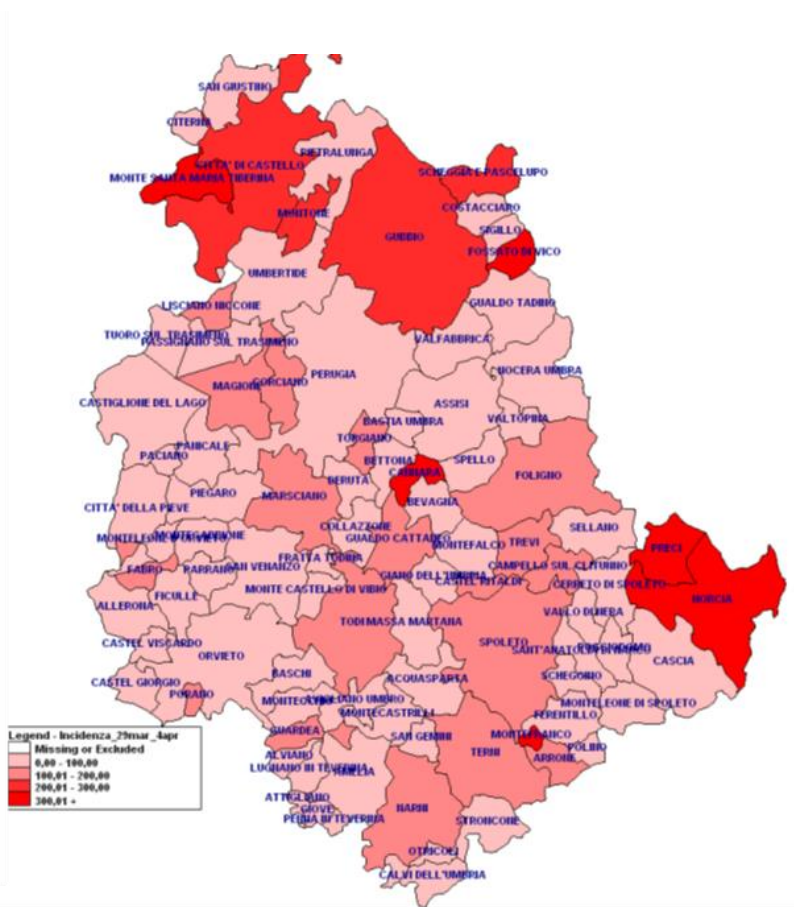


Incidenza per 100.000 abitanti per distretto sanitario

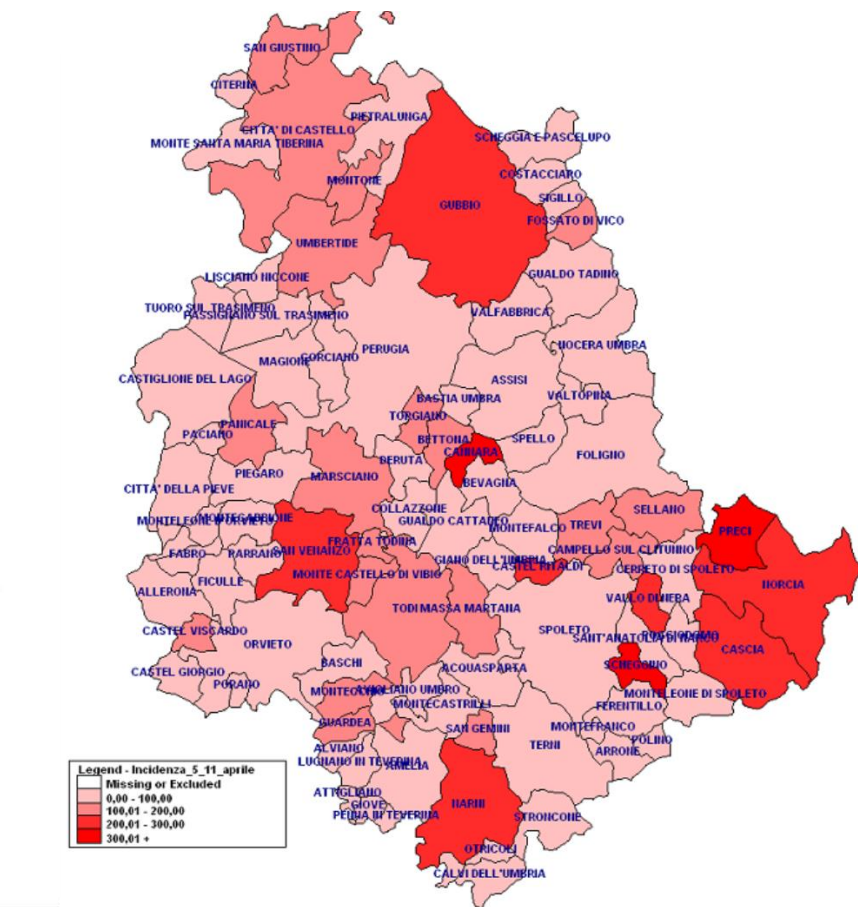




137,56

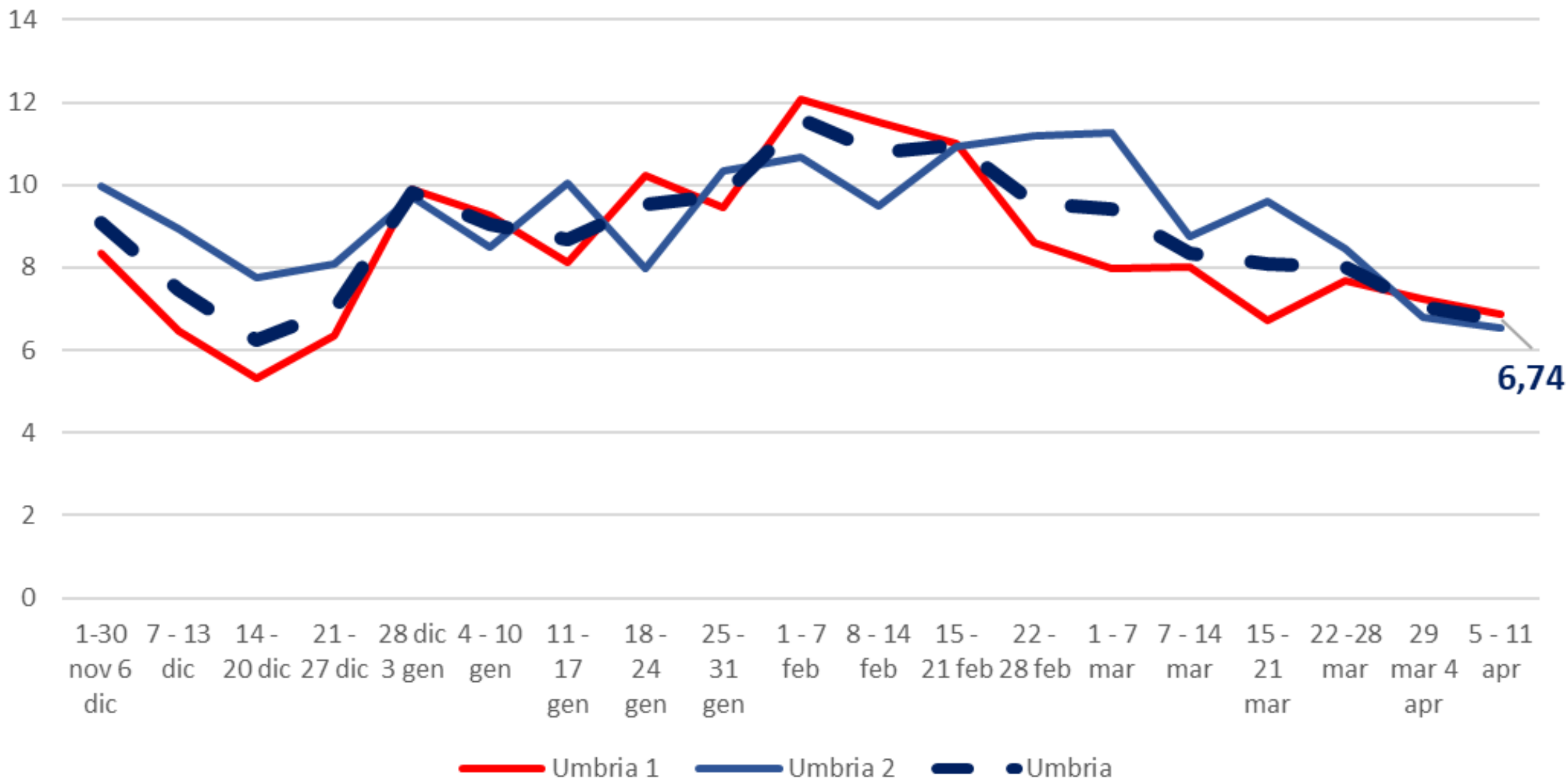


110,09

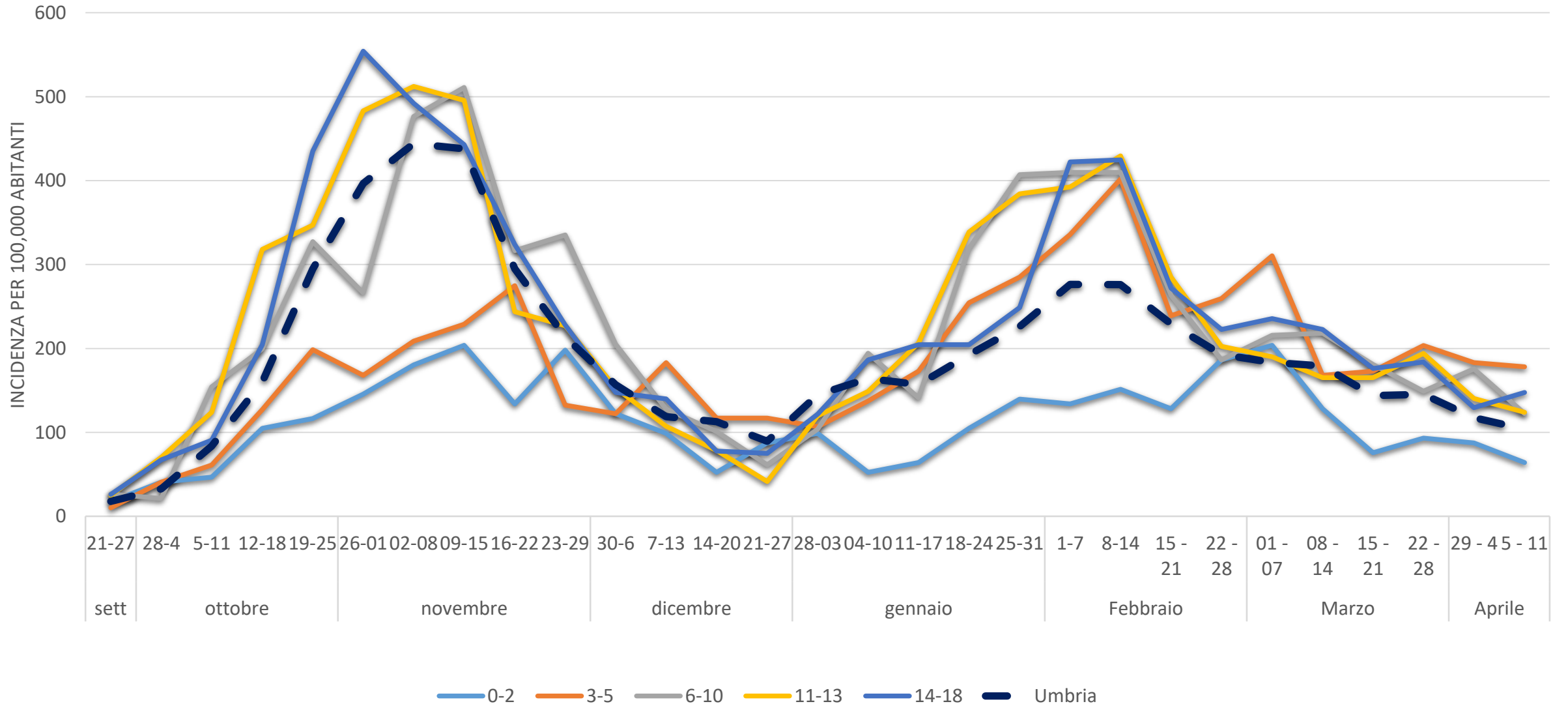


99,18

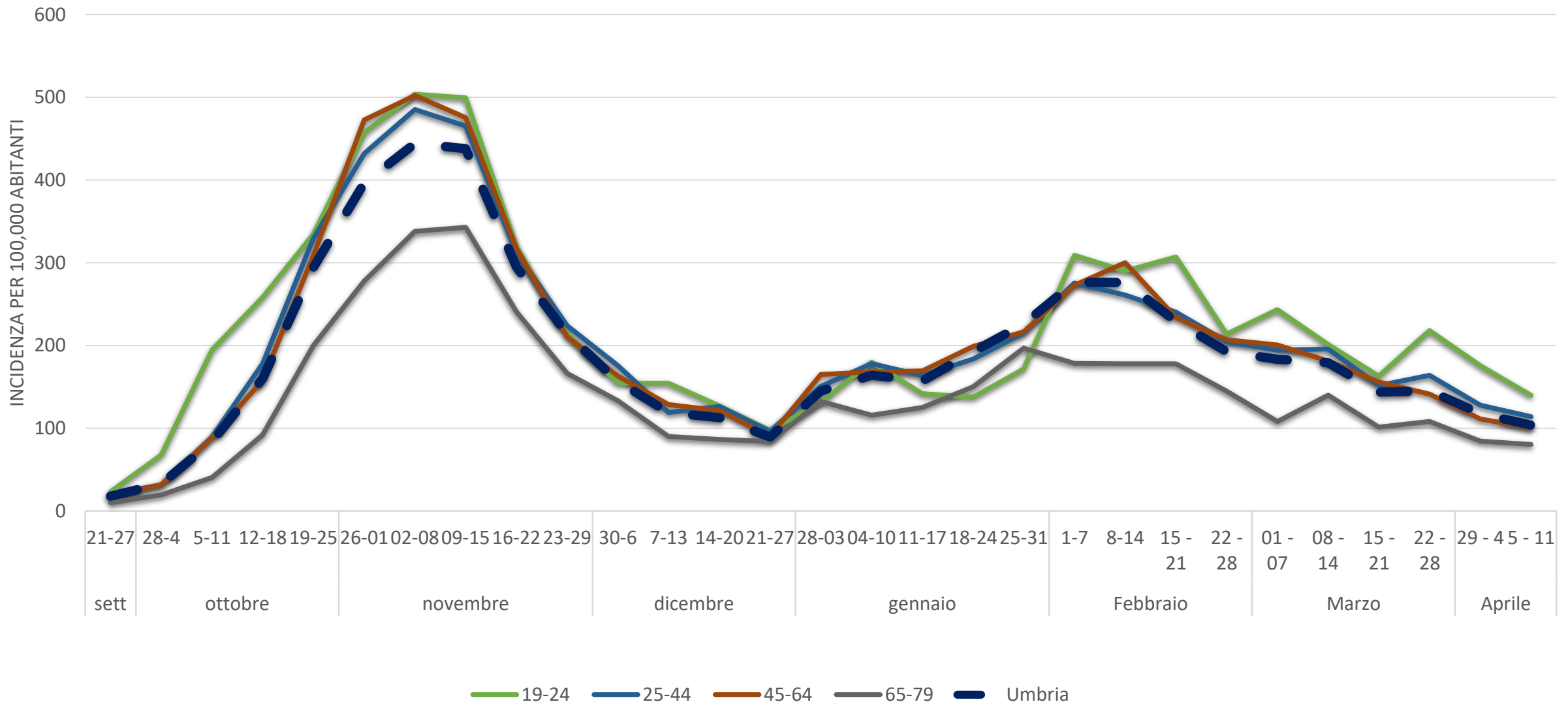
Rapporto Positivi/Tamponi per AUSL



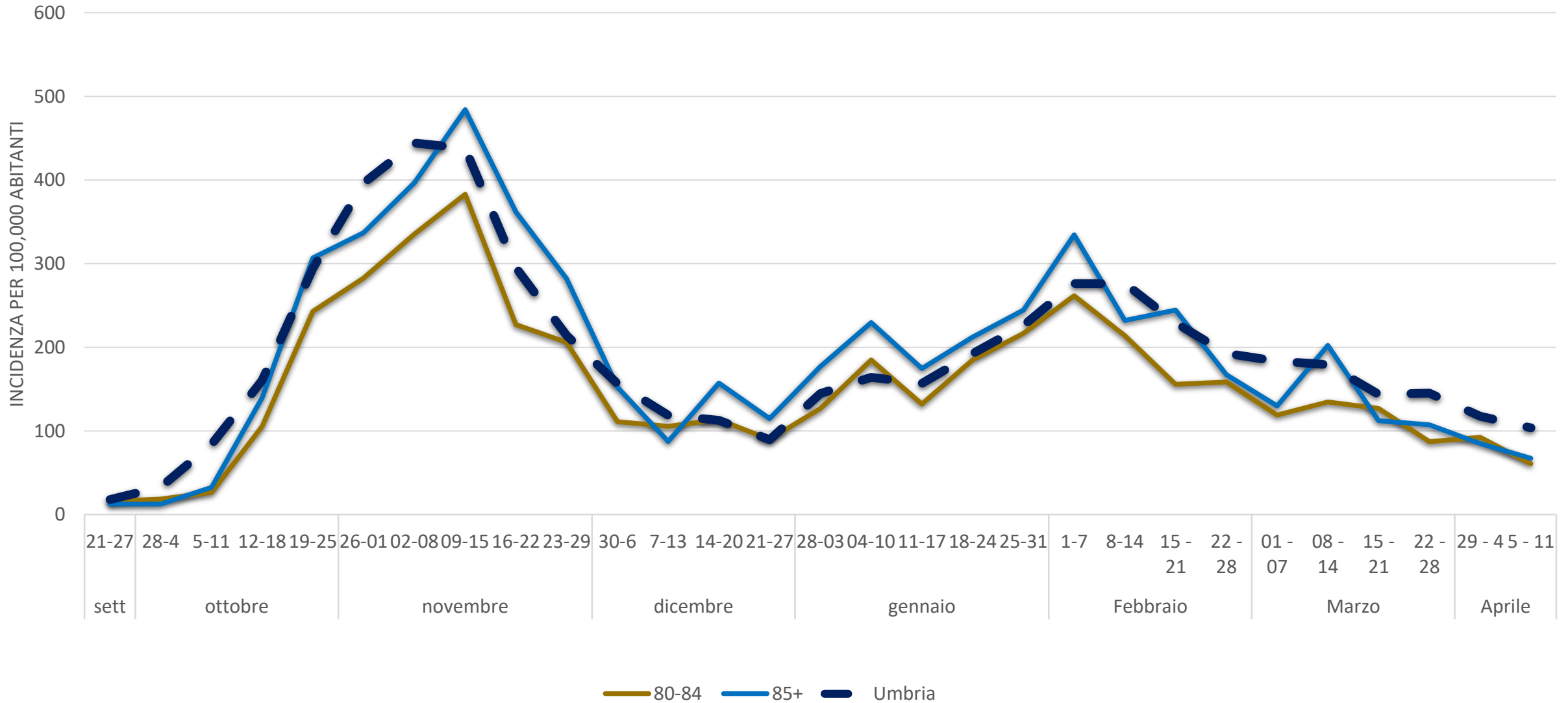
Incidenza per 100.000 abitanti 0 – 18 anni



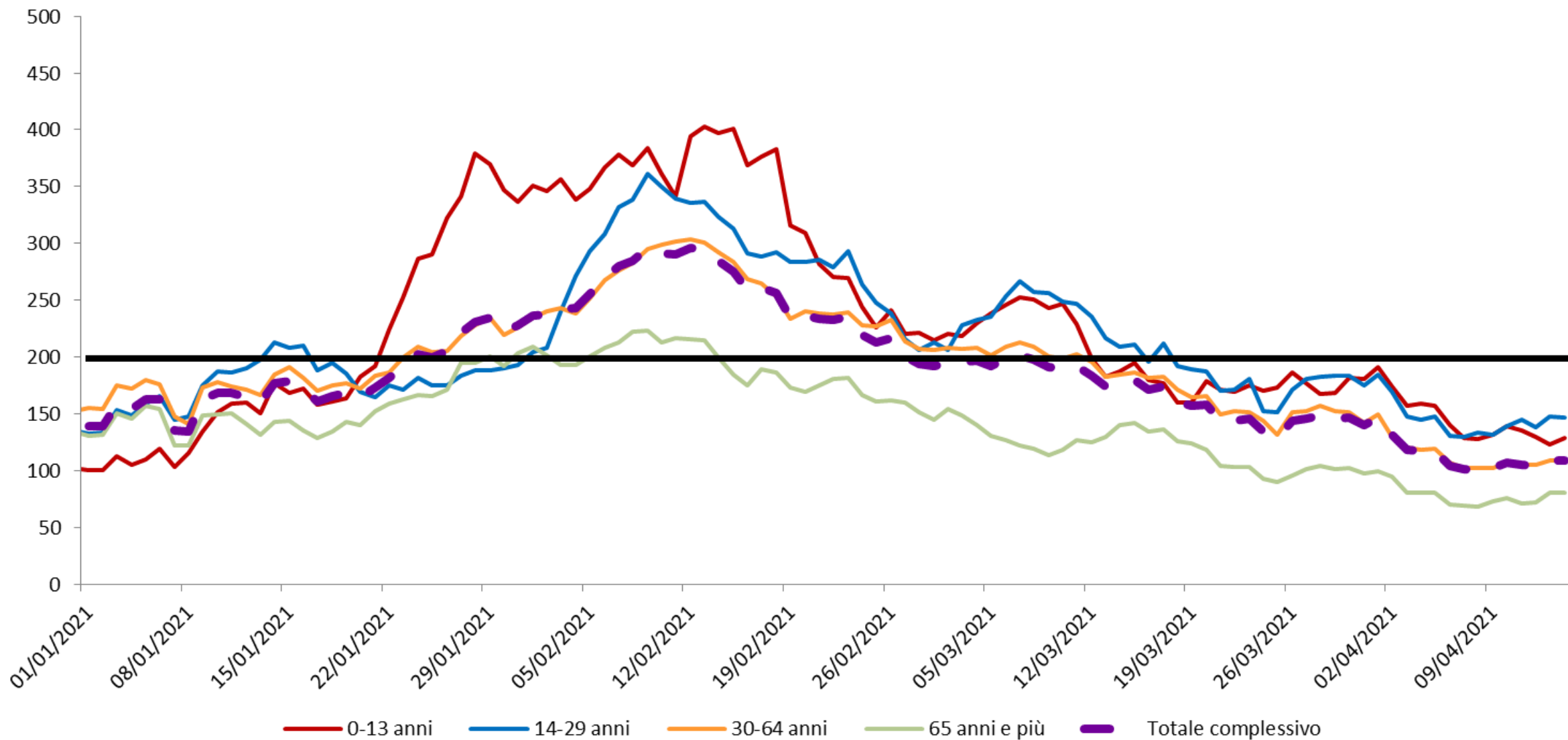
Incidenza per 100.000 abitanti 19 – 79 anni



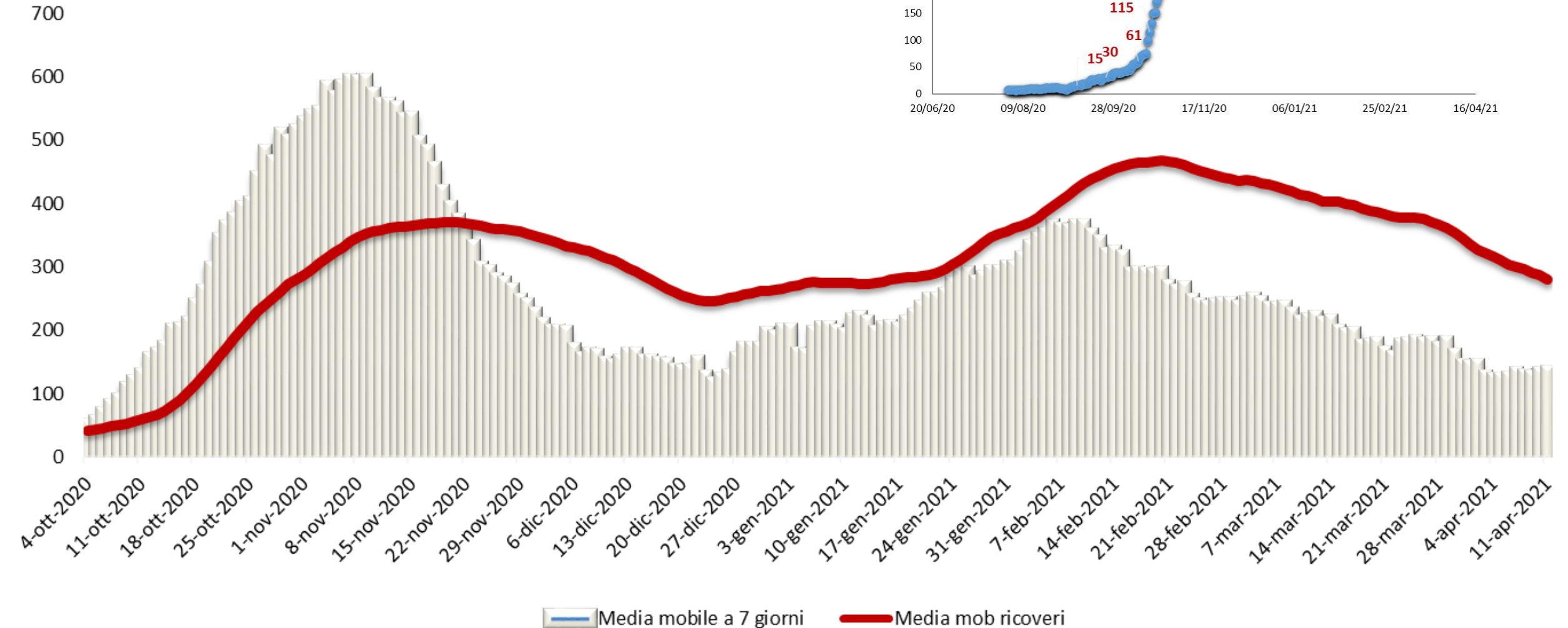
Incidenza 80 e più anni



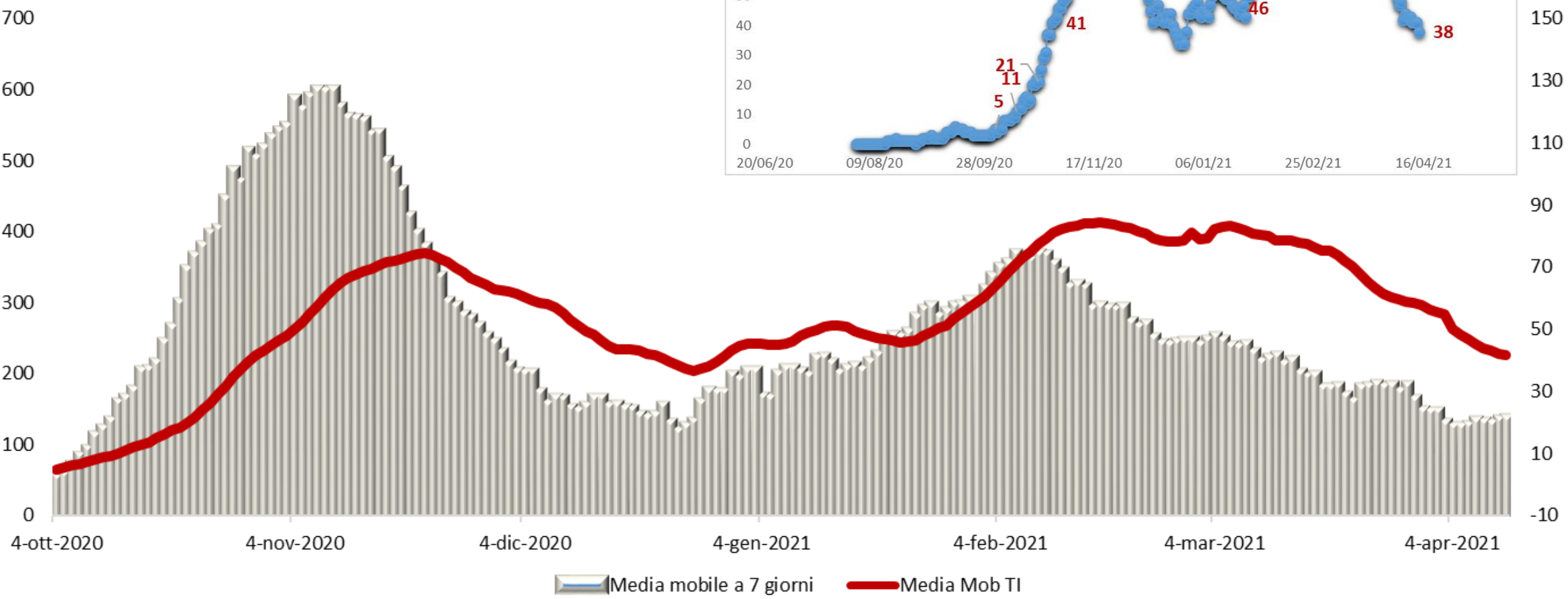
Incidenza settimanale mobile (x100000 abitanti) per grandi fasce d'età



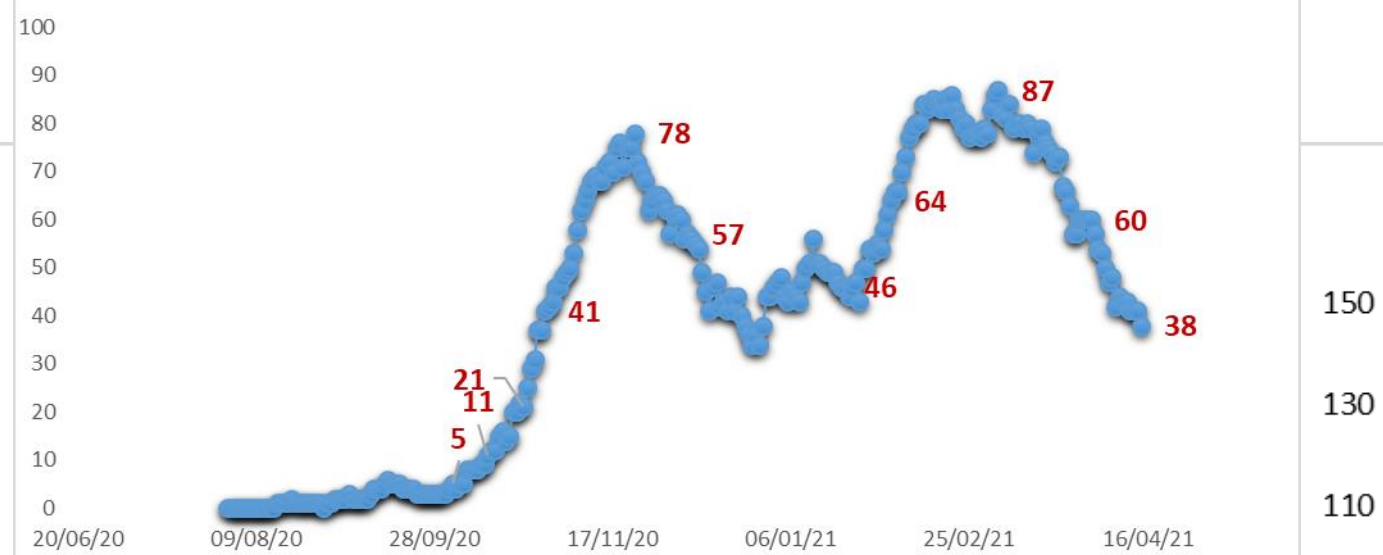
Confronto curva epidemica e ricoveri



Confronto curva epidemica e ricoveri in TI



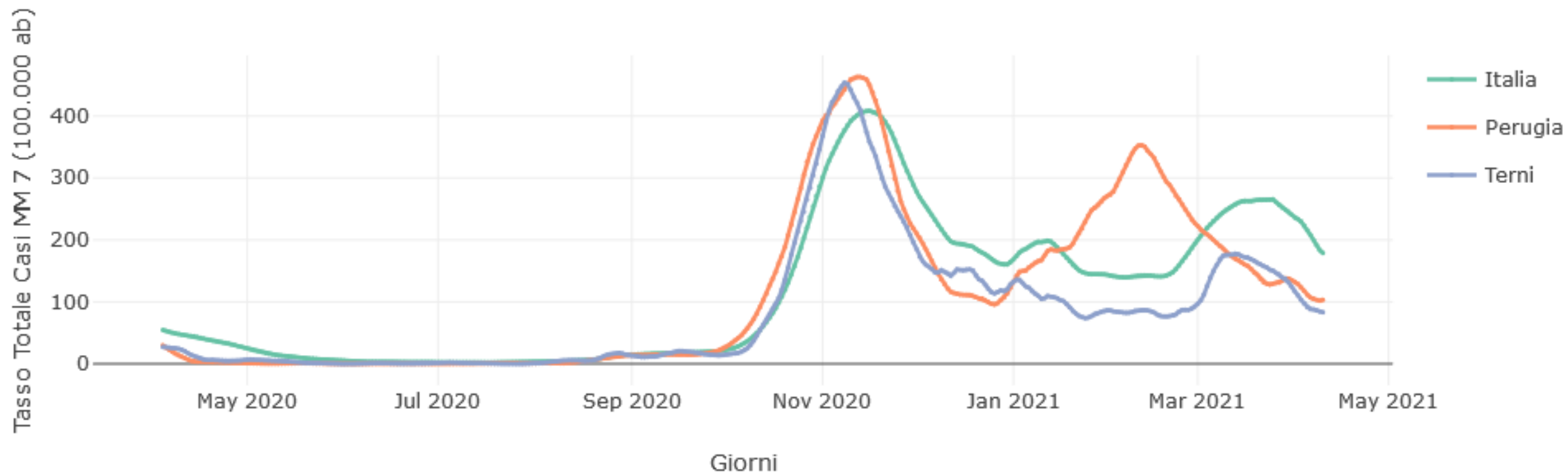
Ricoveri in terapia intensiva



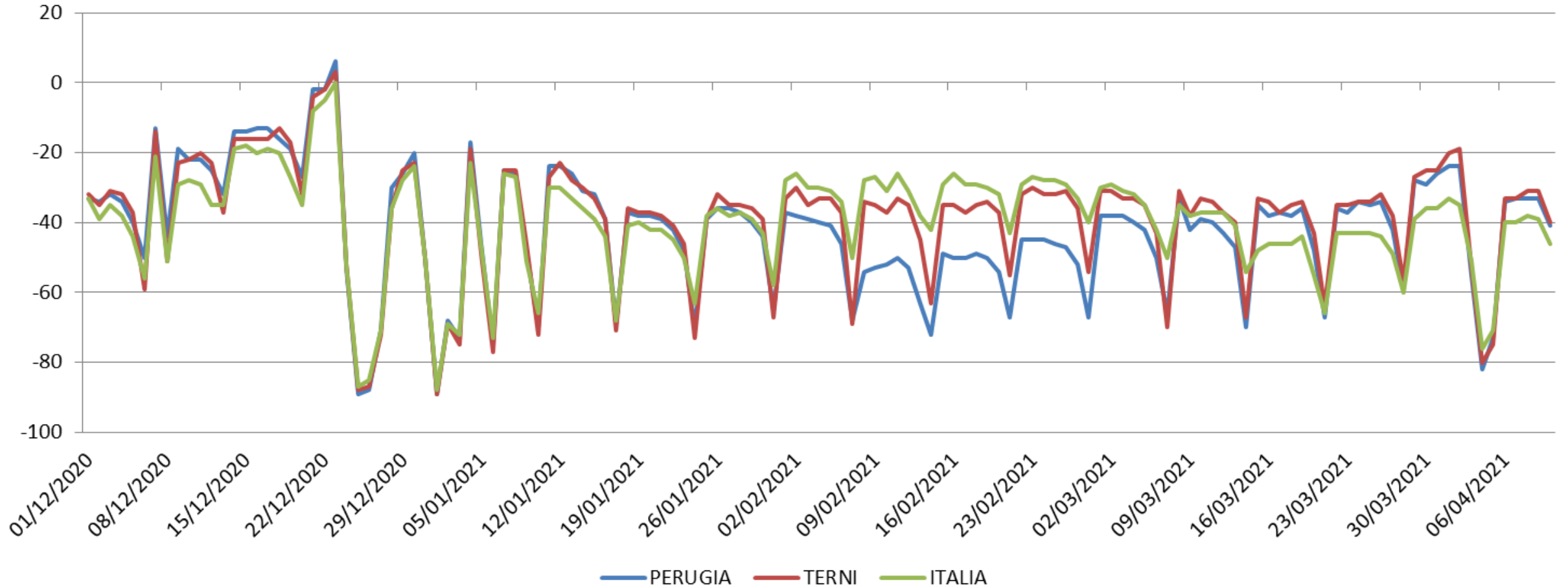
Decessi



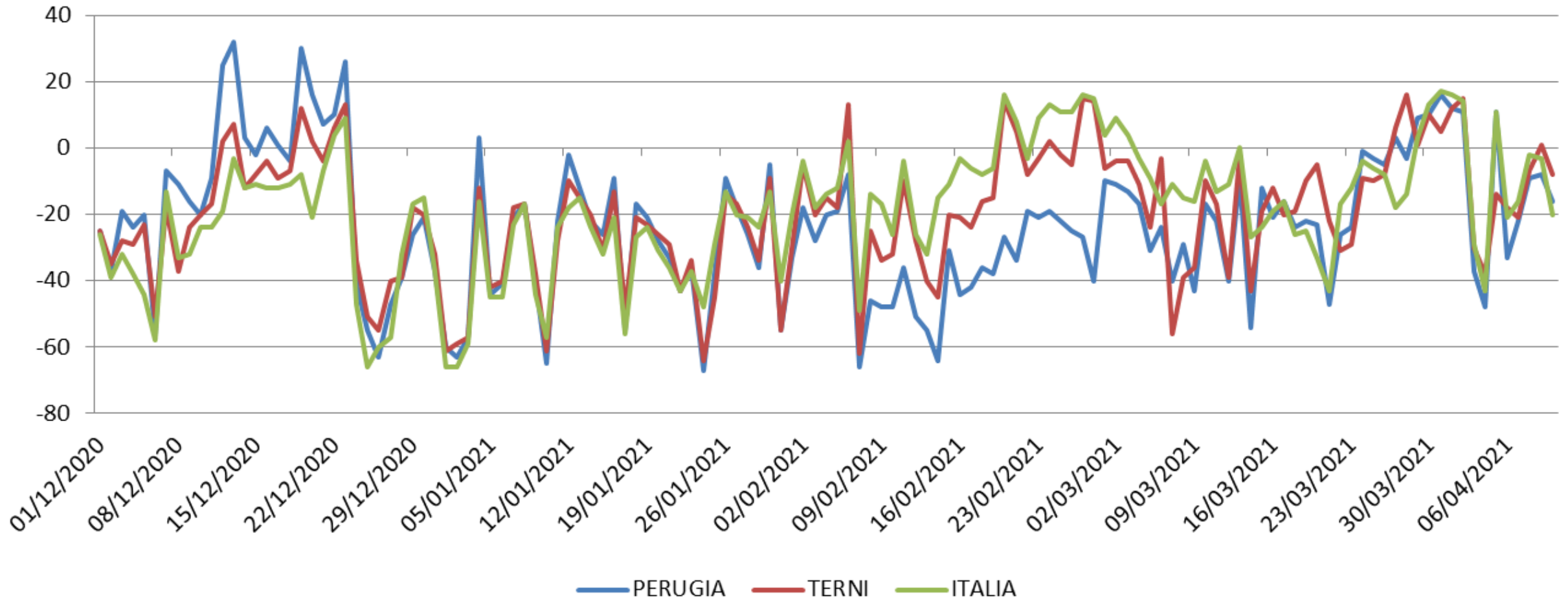
Variazioni a 7 gg Tasso Totale Casi MM 7 (100.000 ab)



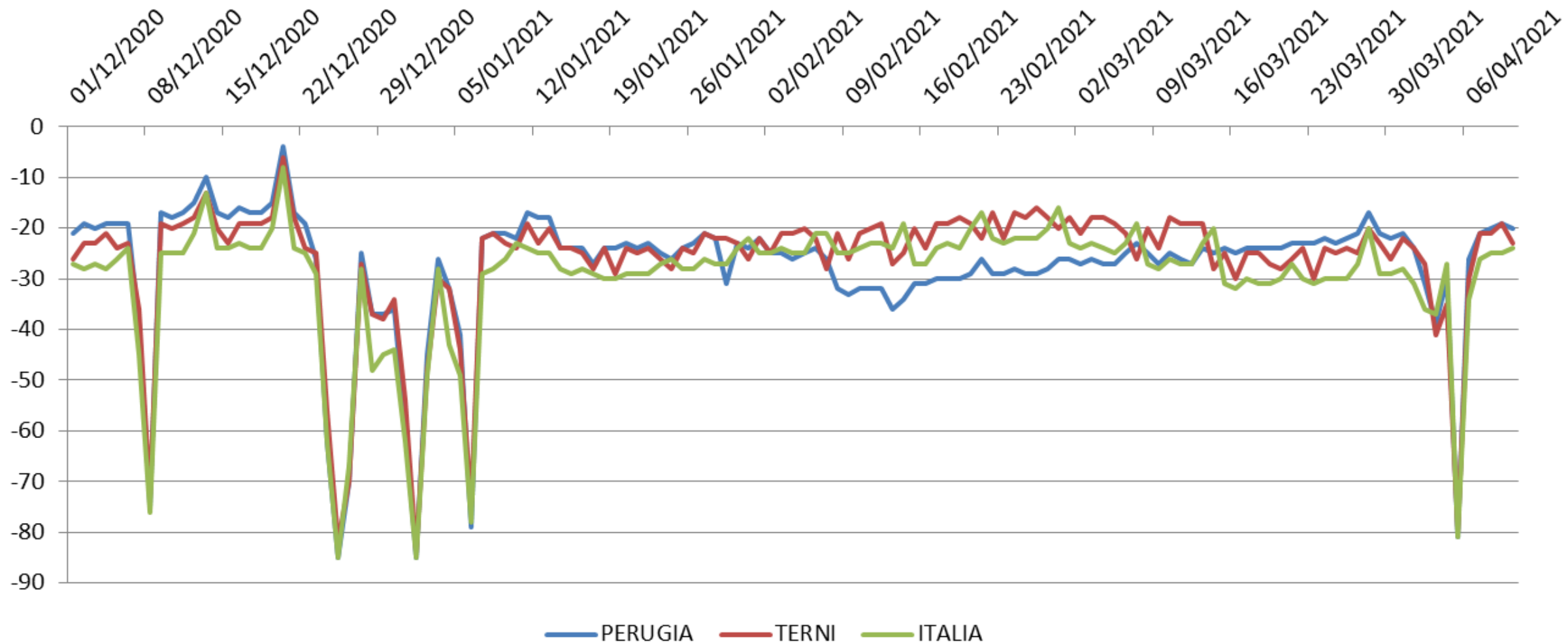
Movimenti verso luoghi tempo libero - Italia Umbria



Movimenti verso parchi (aree verdi)- Italia Umbria



Movimenti verso luoghi di lavoro - Italia Umbria



Movimenti verso aree residenziali - Italia Umbria

