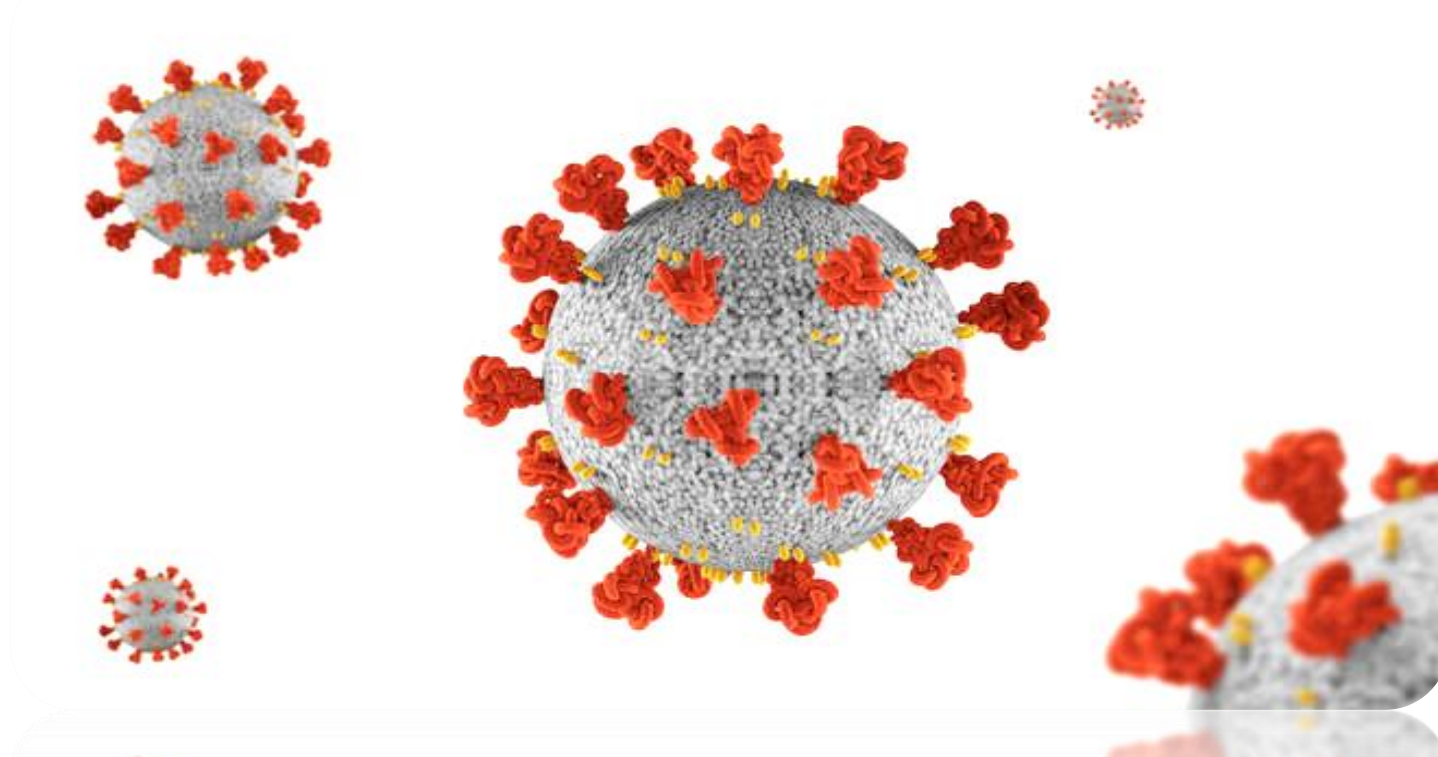
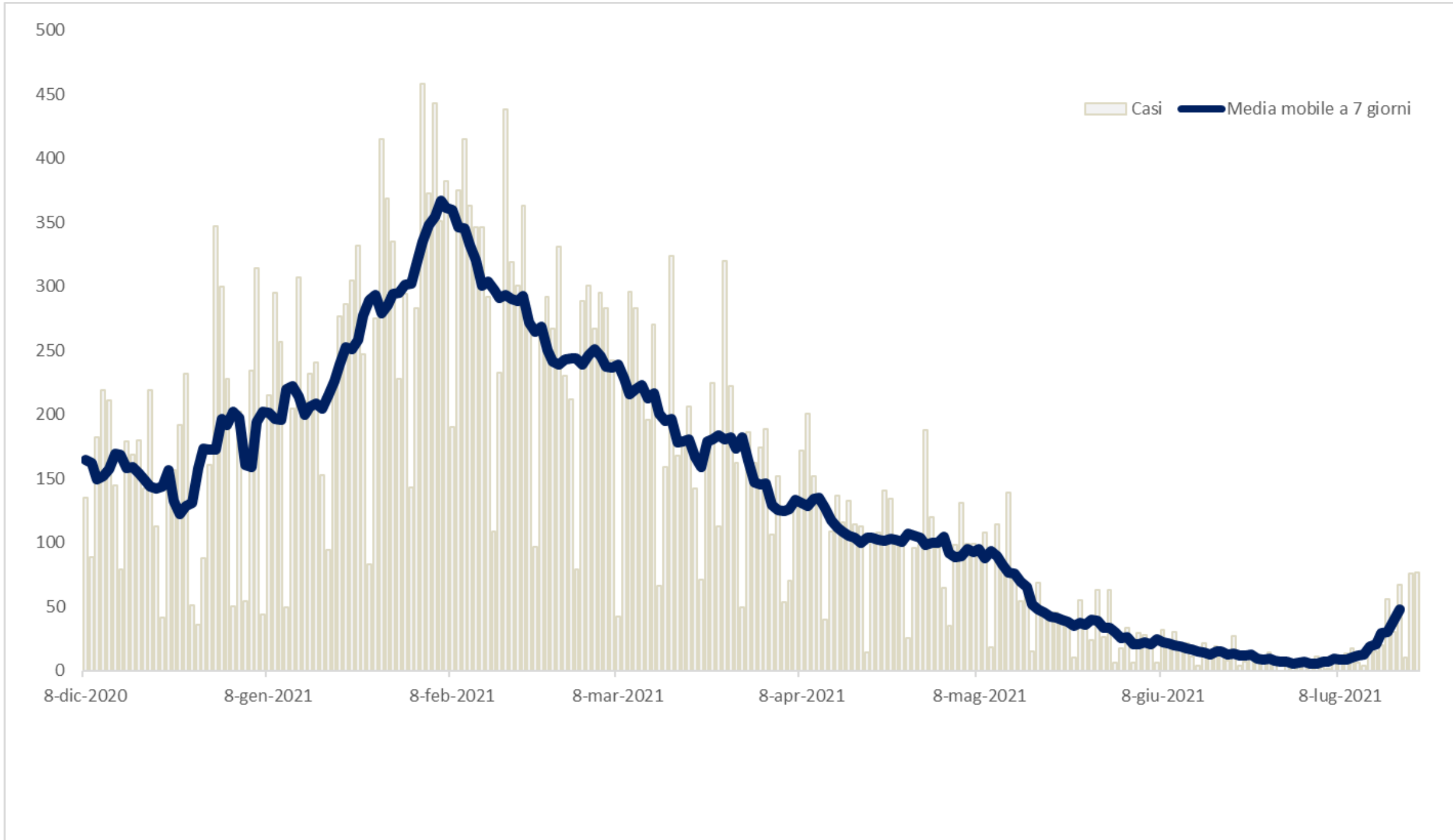


# Analisi nucleo epidemiologico Sars- Cov 2 in Umbria

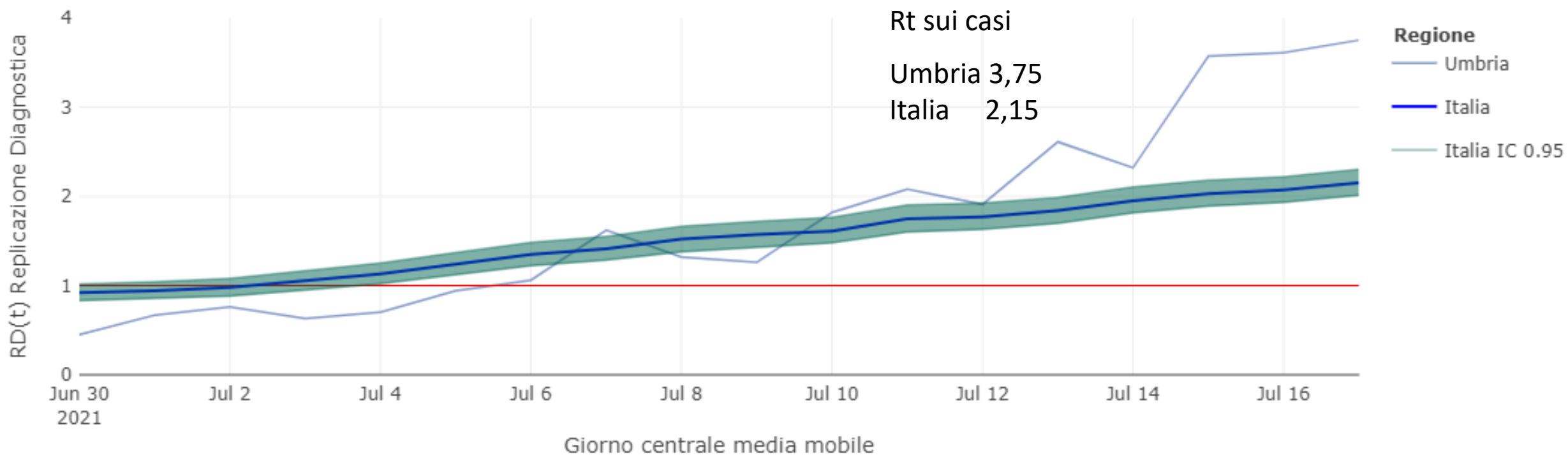


*19 luglio 2021*

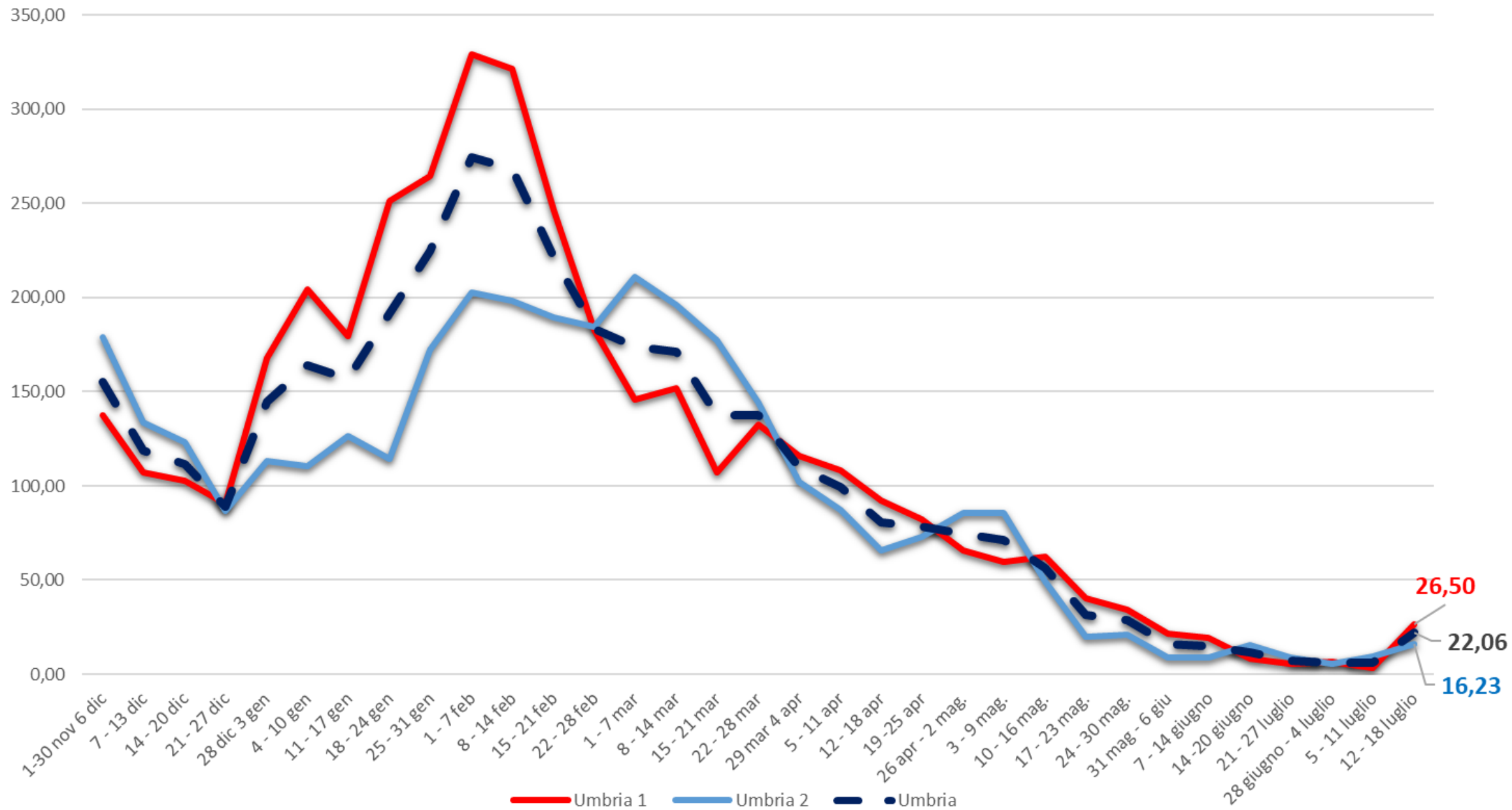
*Fonte dati integrata: DB COVID – Umbria Digitale*



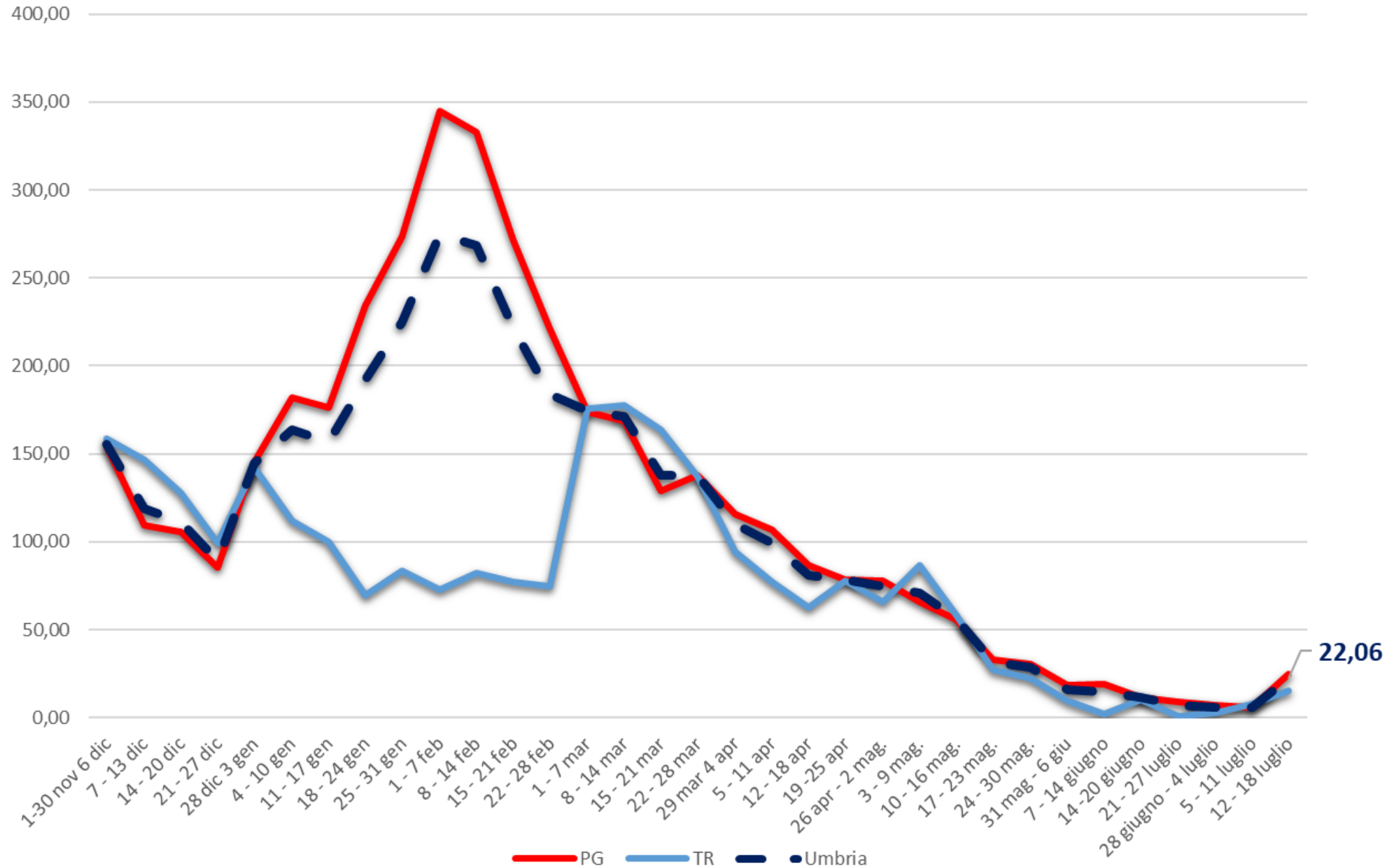
RD(t) Indice di Replicazione Diagnostica a lag 7 giorni (medie mobili a 7 giorni)



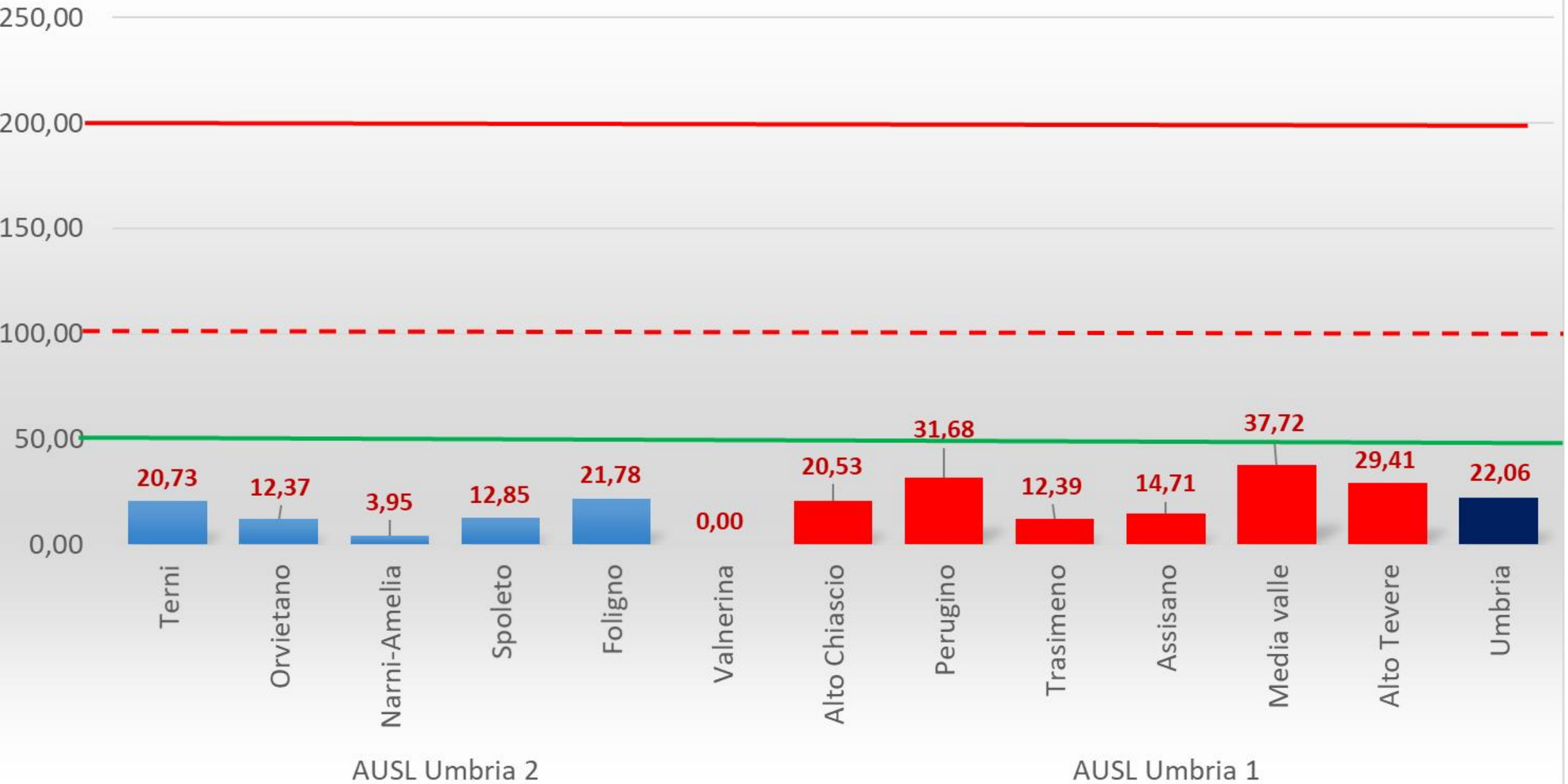
# AUSL incidenza settimanale per 100.000 abitanti

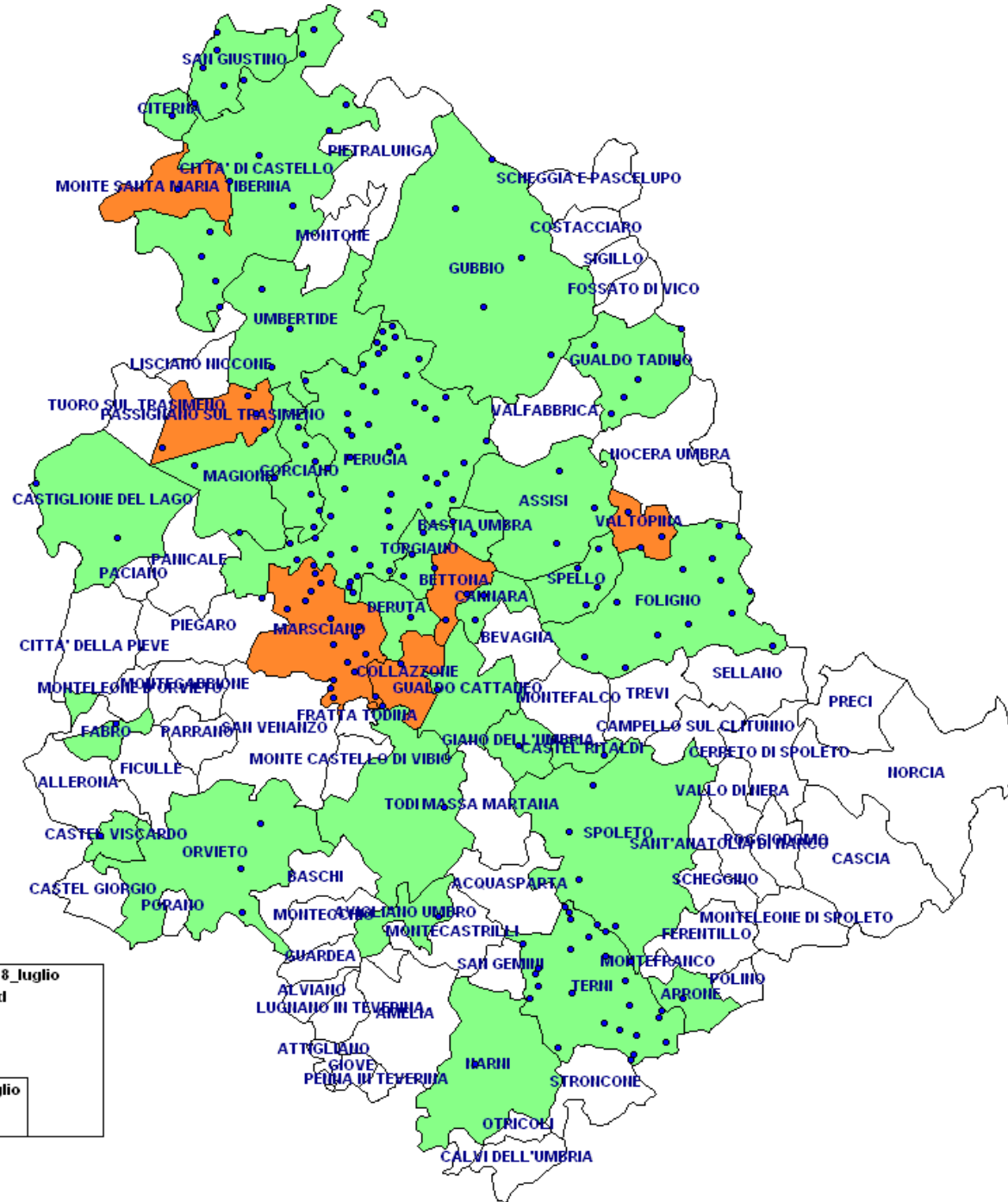
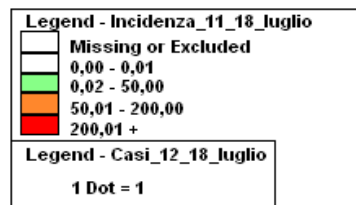
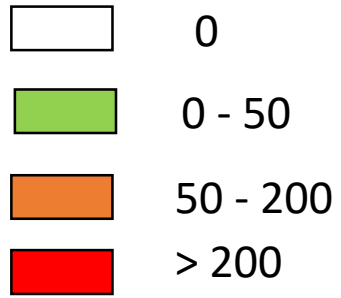


# Province incidenza settimanale per 100.000 abitanti

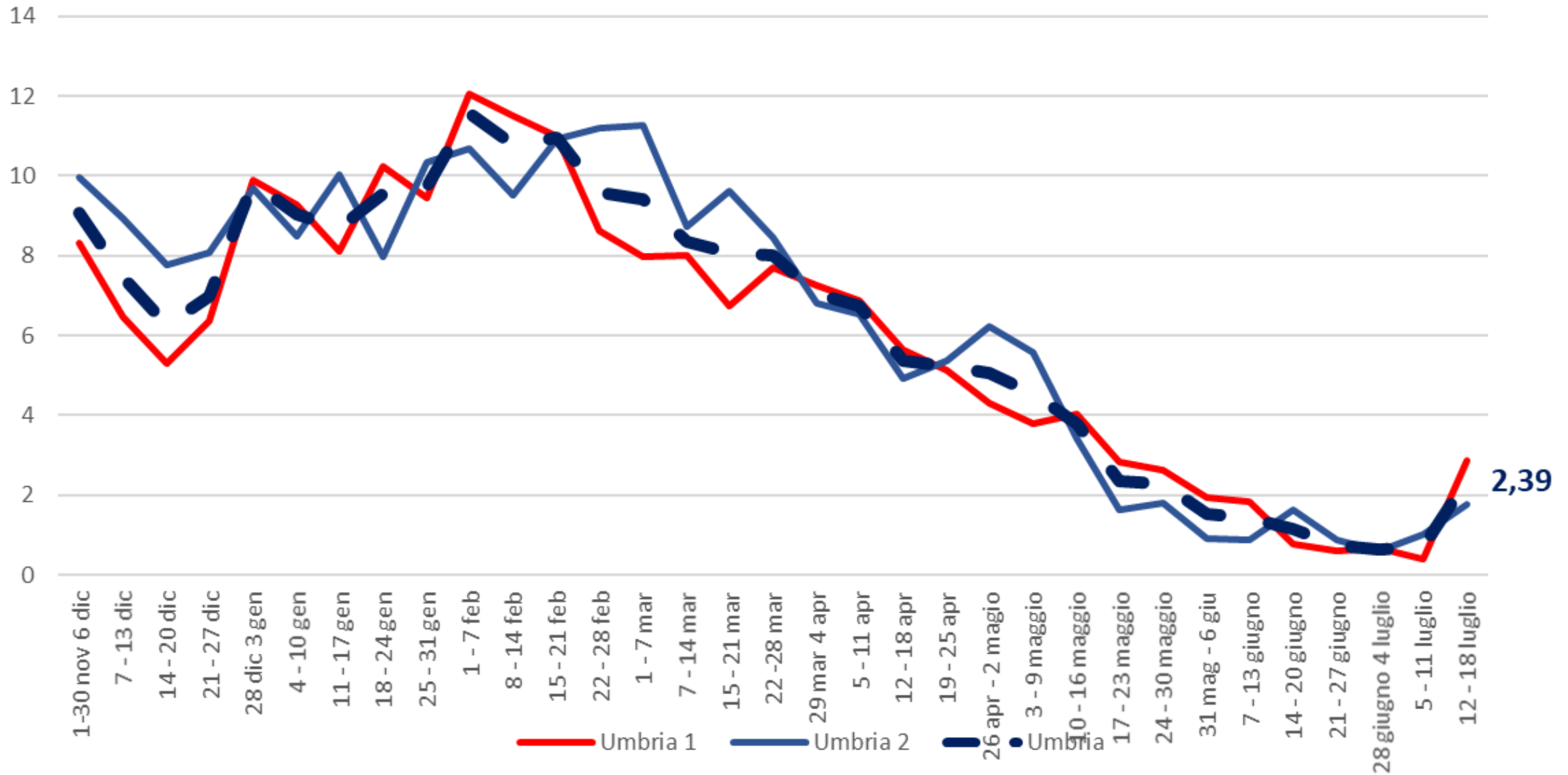


# Incidenza settimanale per 100.000 abitanti per distretto sanitario



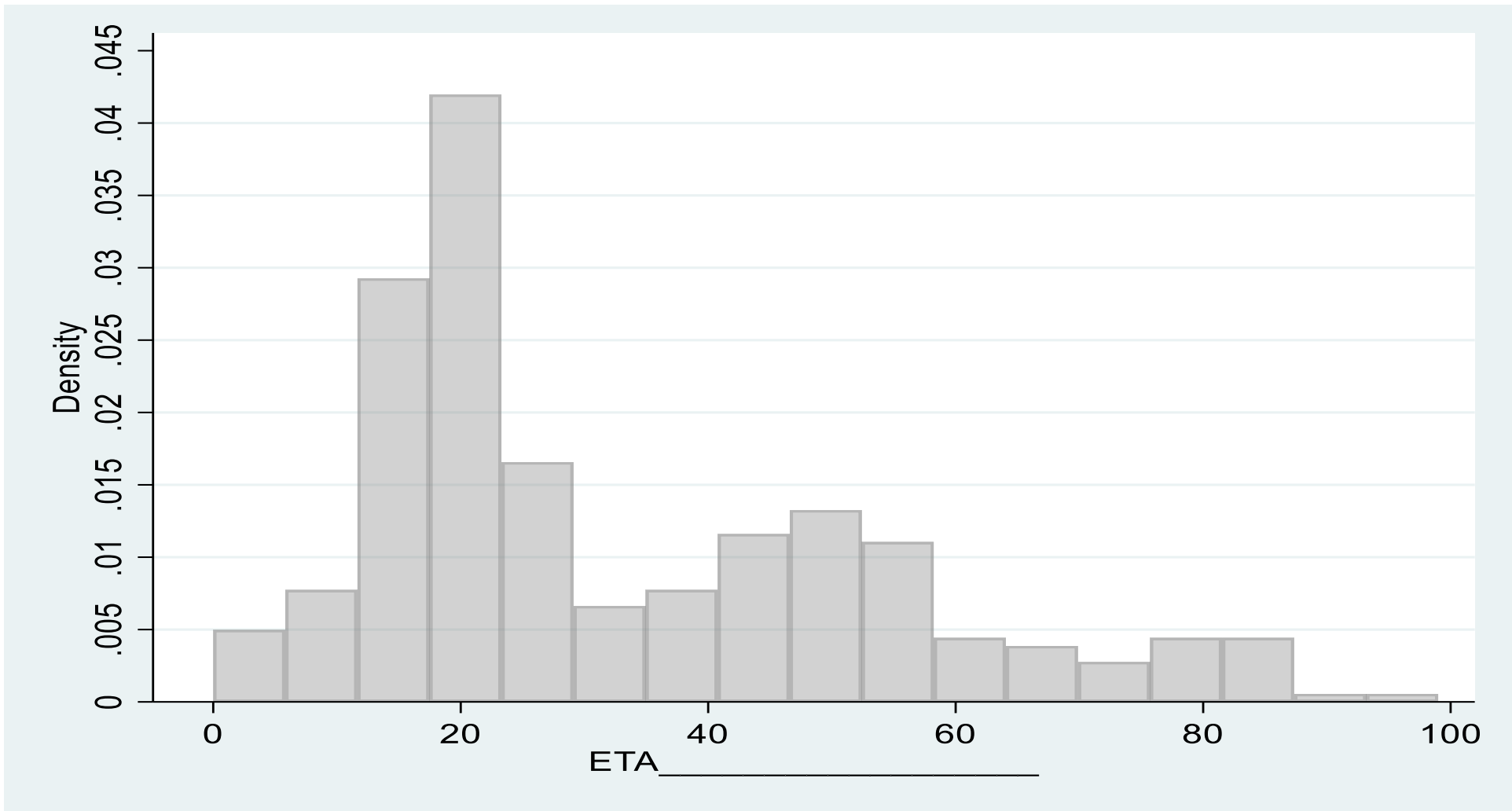


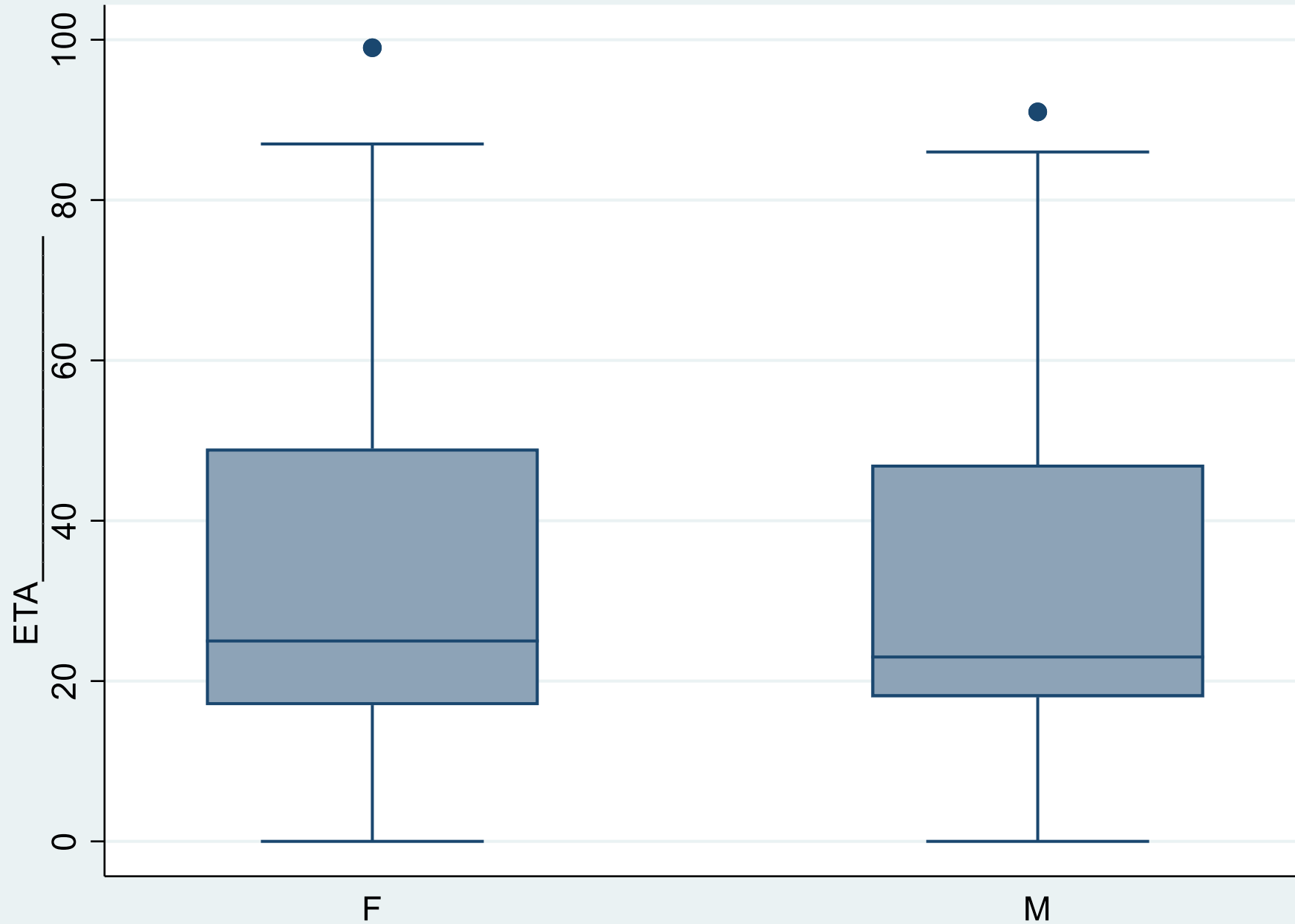
## Rapporto Positivi/Tamponi per AUSL



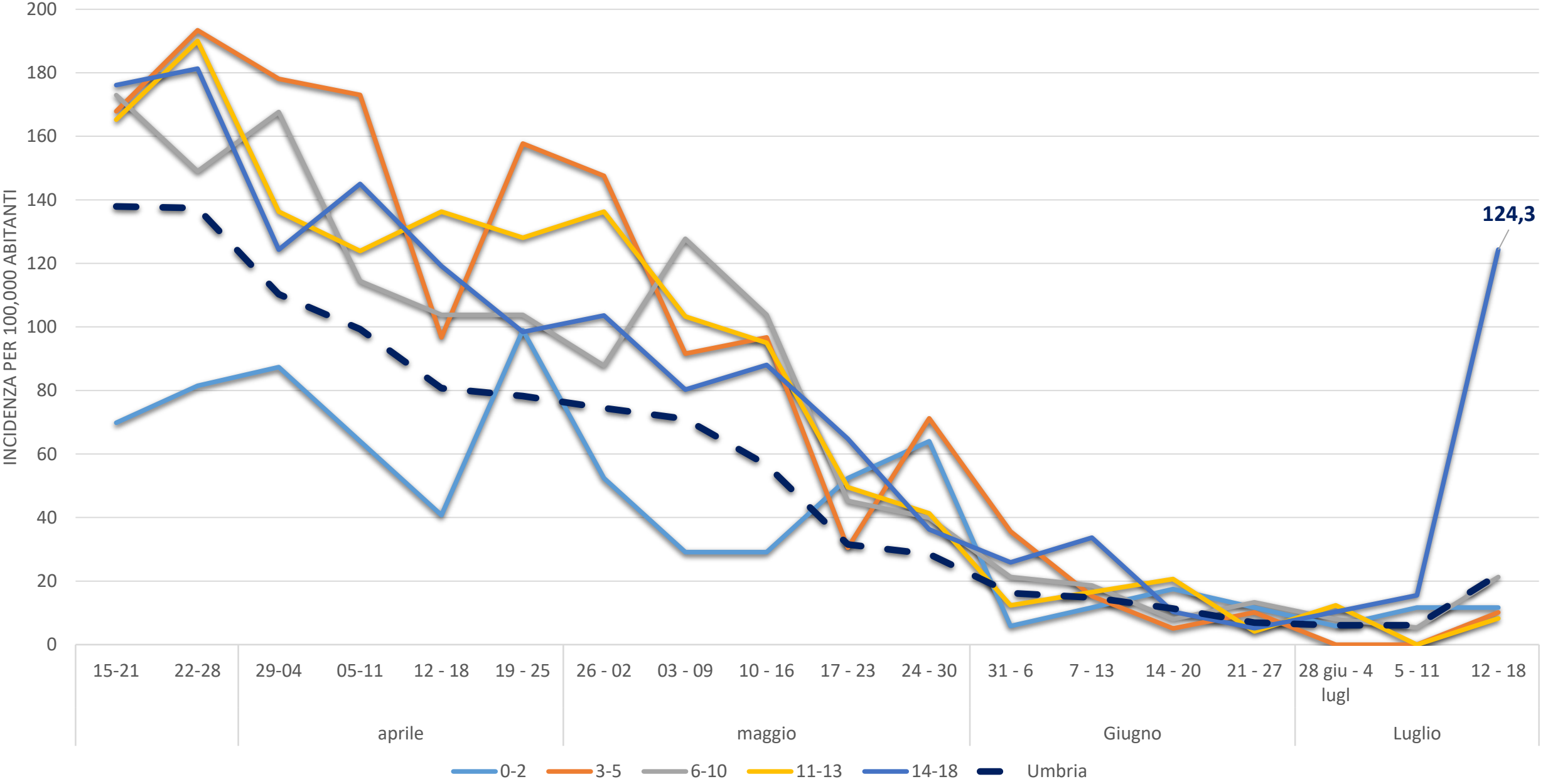


|   | Minimo | 25% | Mediana | 75% | Massimo | Moda |
|---|--------|-----|---------|-----|---------|------|
| F | 0      | 17  | 25      | 49  | 99      | 16   |
| M | 0      | 18  | 23      | 47  | 91      | 18   |

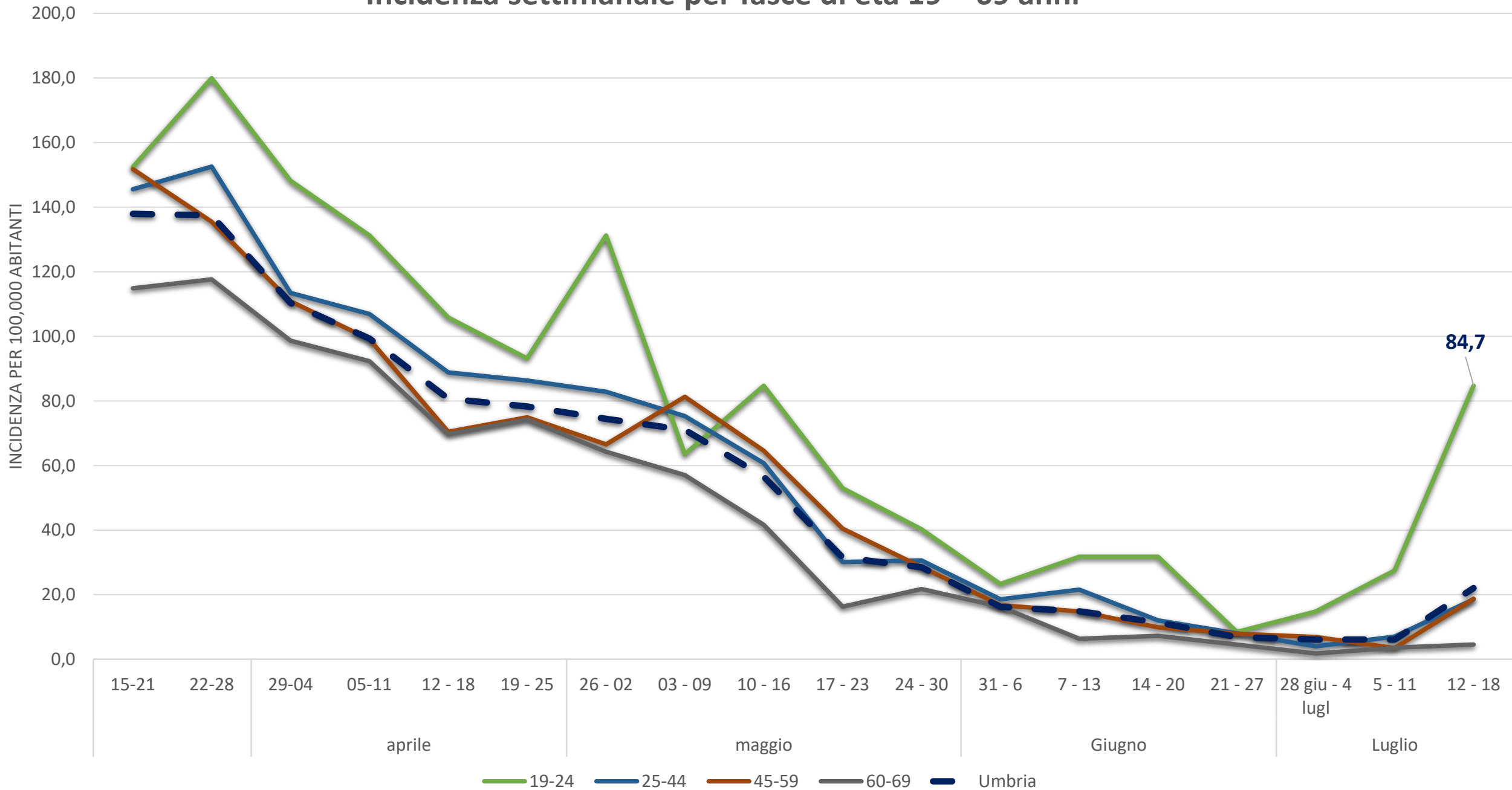




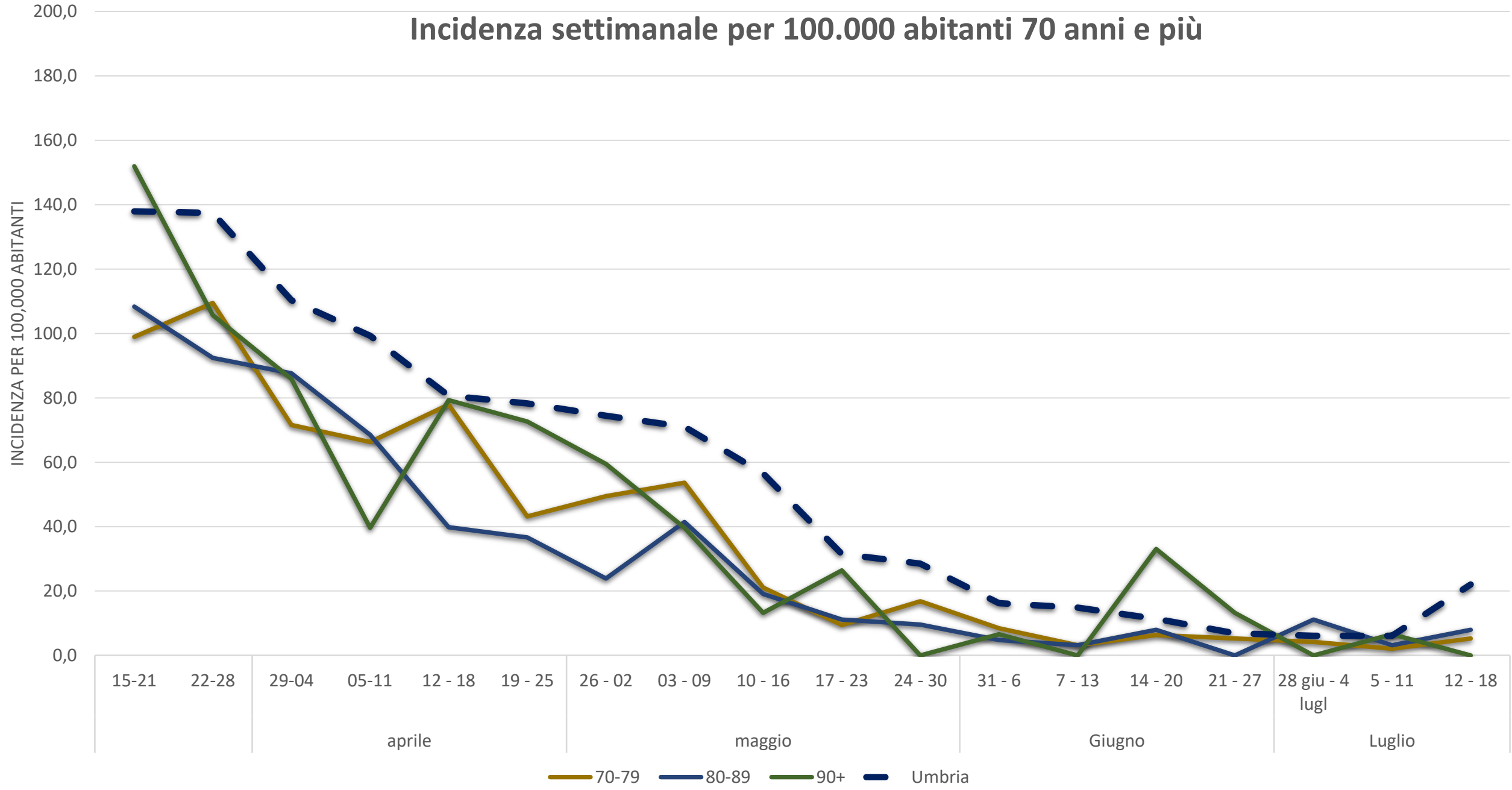
# Incidenza settimanale per fasce di età 0 – 18 anni



# Incidenza settimanale per fasce di età 19 – 69 anni



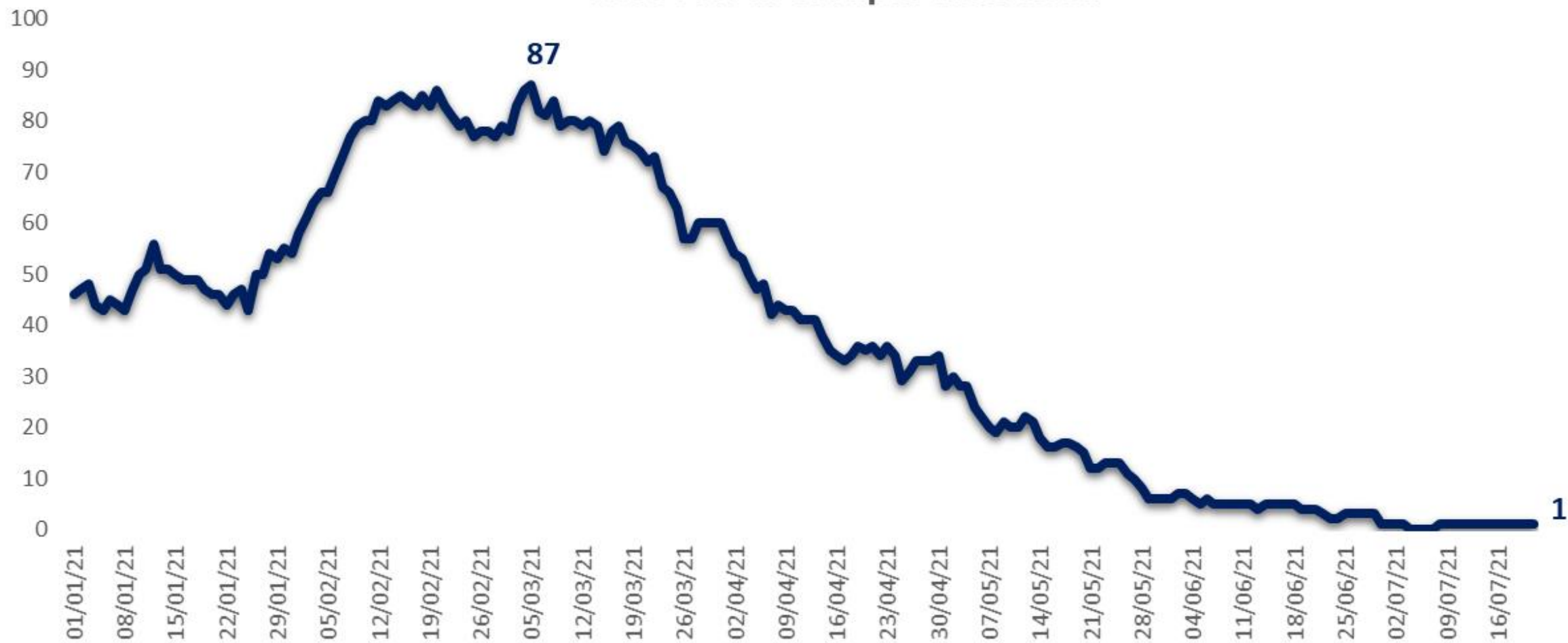
# Incidenza settimanale per 100.000 abitanti 70 anni e più



## Ricoveri ordinari



## Ricoveri in terapia intensiva



# Decessi

