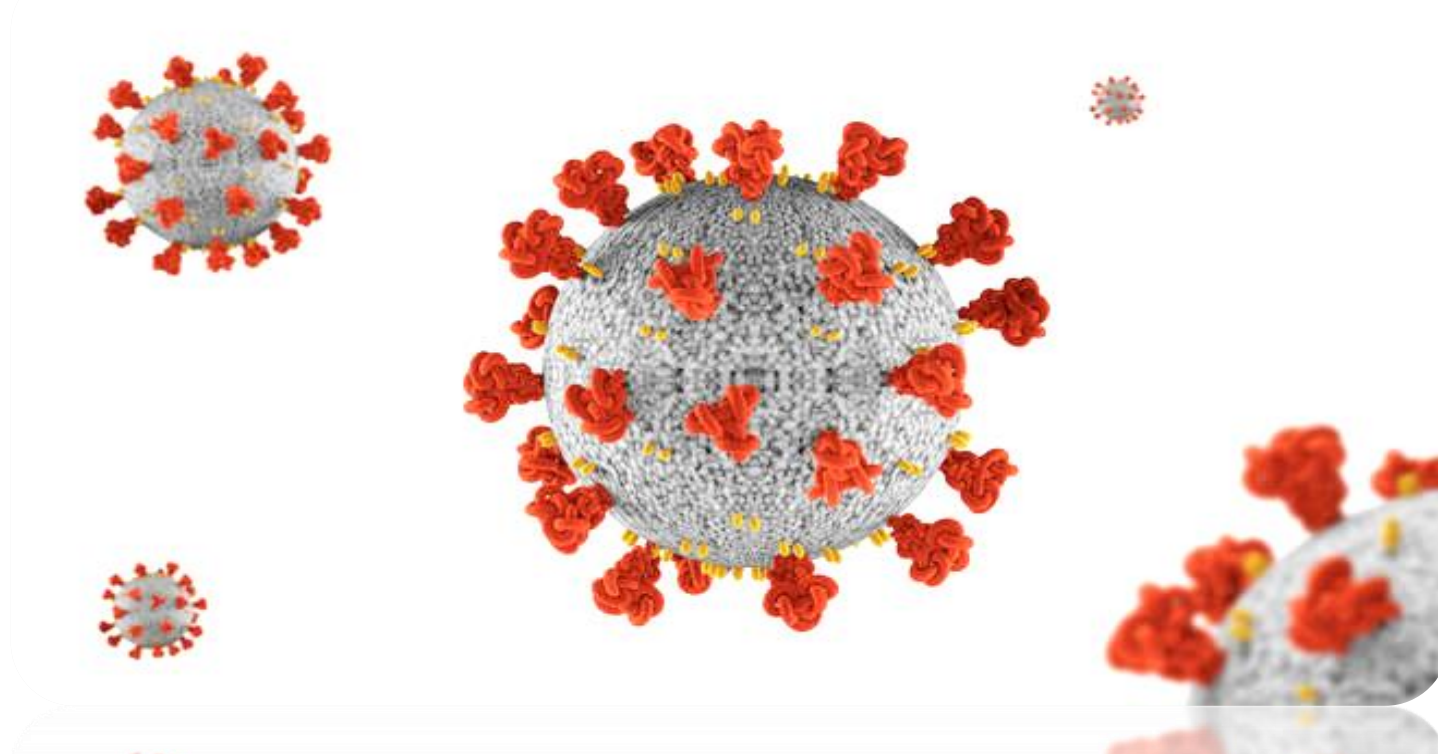
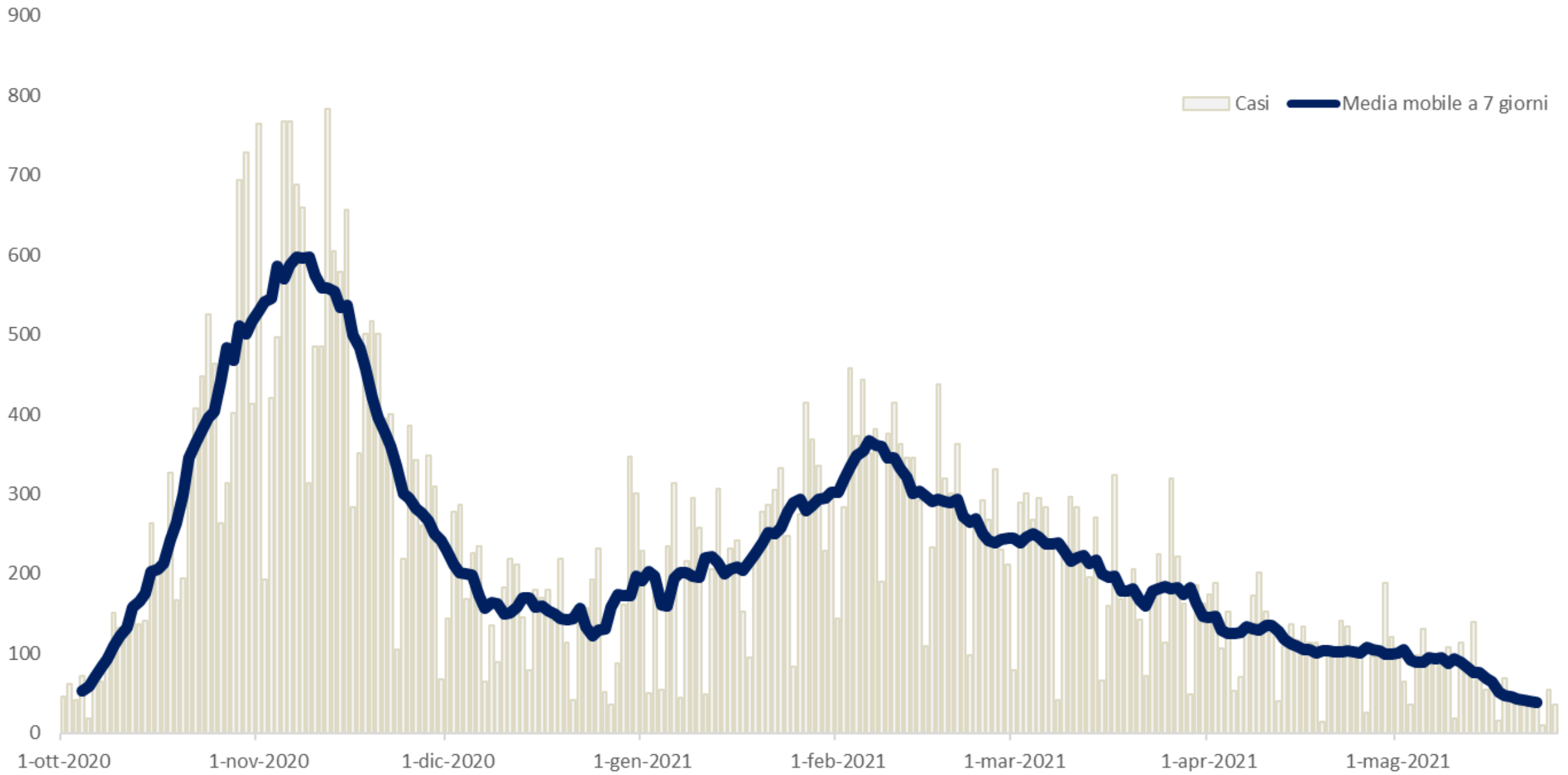


Analisi nucleo epidemiologico Sars- Cov 2 in Umbria

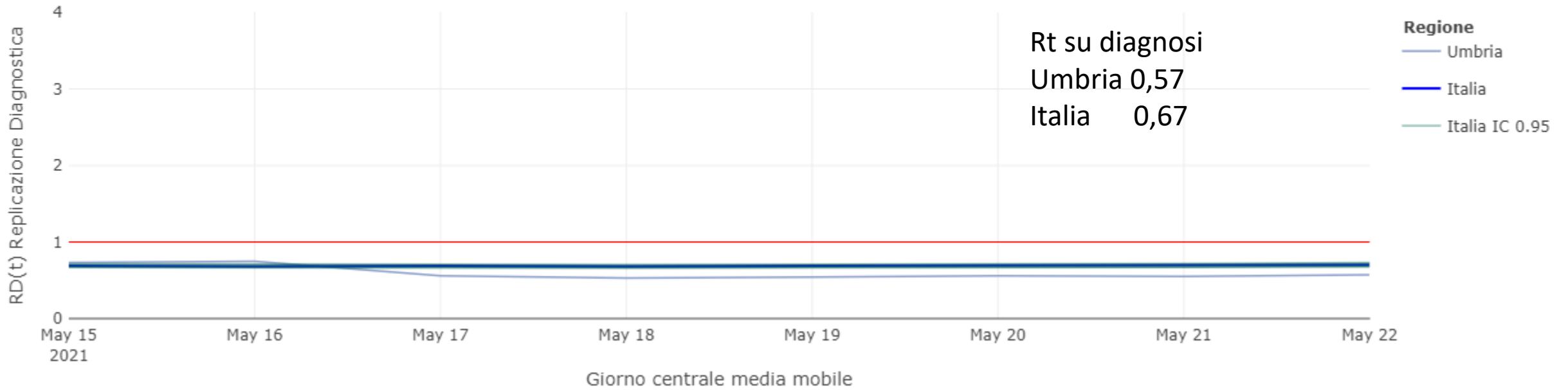


27 maggio 2021

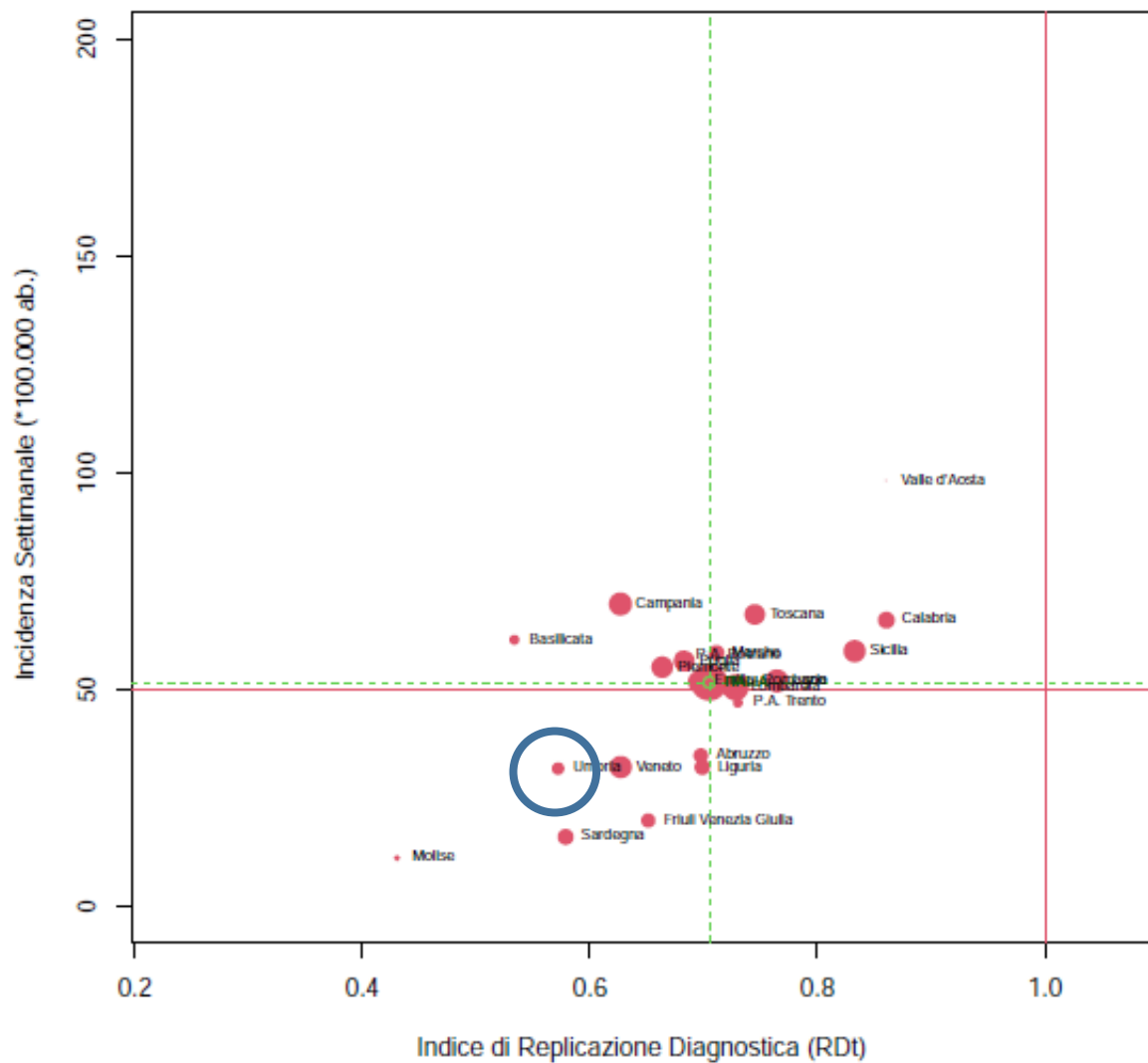
Fonte dati integrata: DB COVID – Umbria Digitale



RD(t) Indice di Replicazione Diagnostica a lag 7 giorni (medie mobili a 7 giorni)

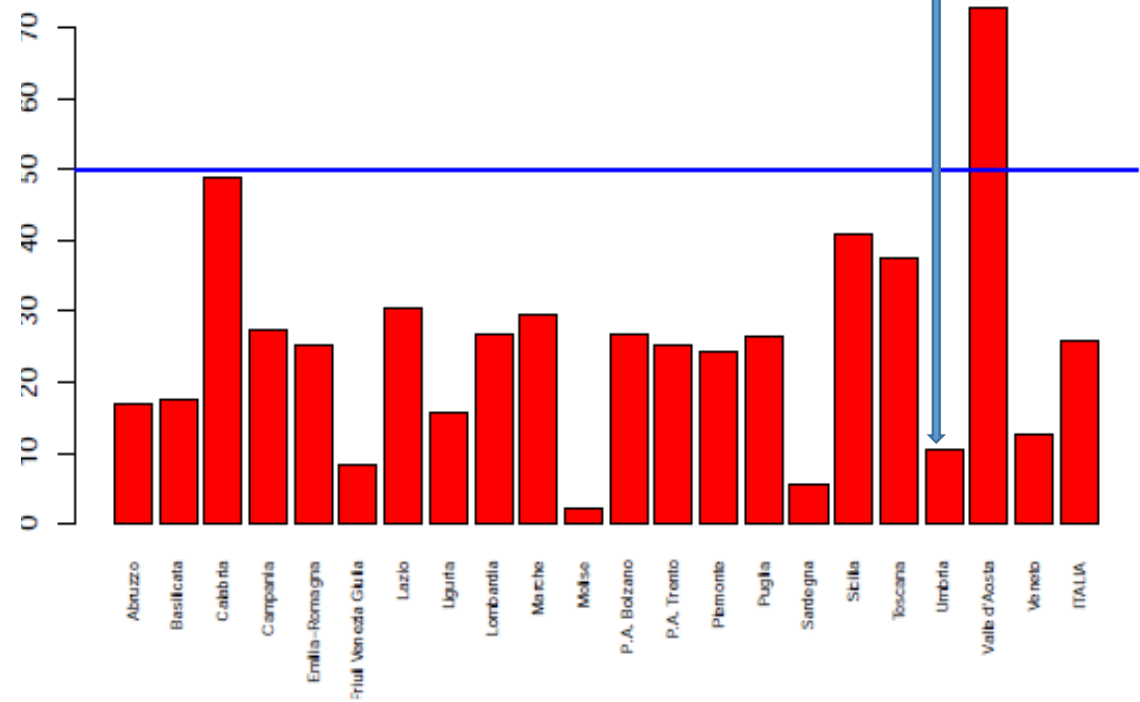


Espanzione Epidemia

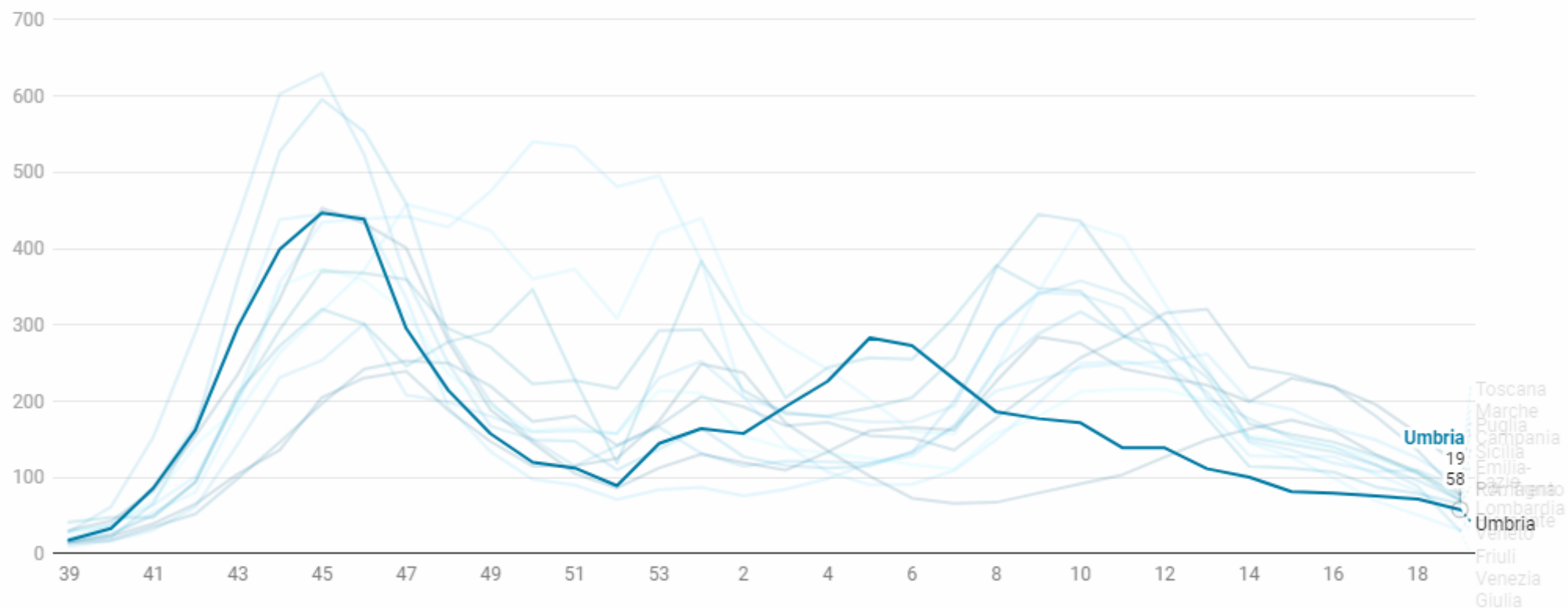


Incidenza a 14 giorni
10 per 100.000

Proiezione a pari condizioni a 14 giorni

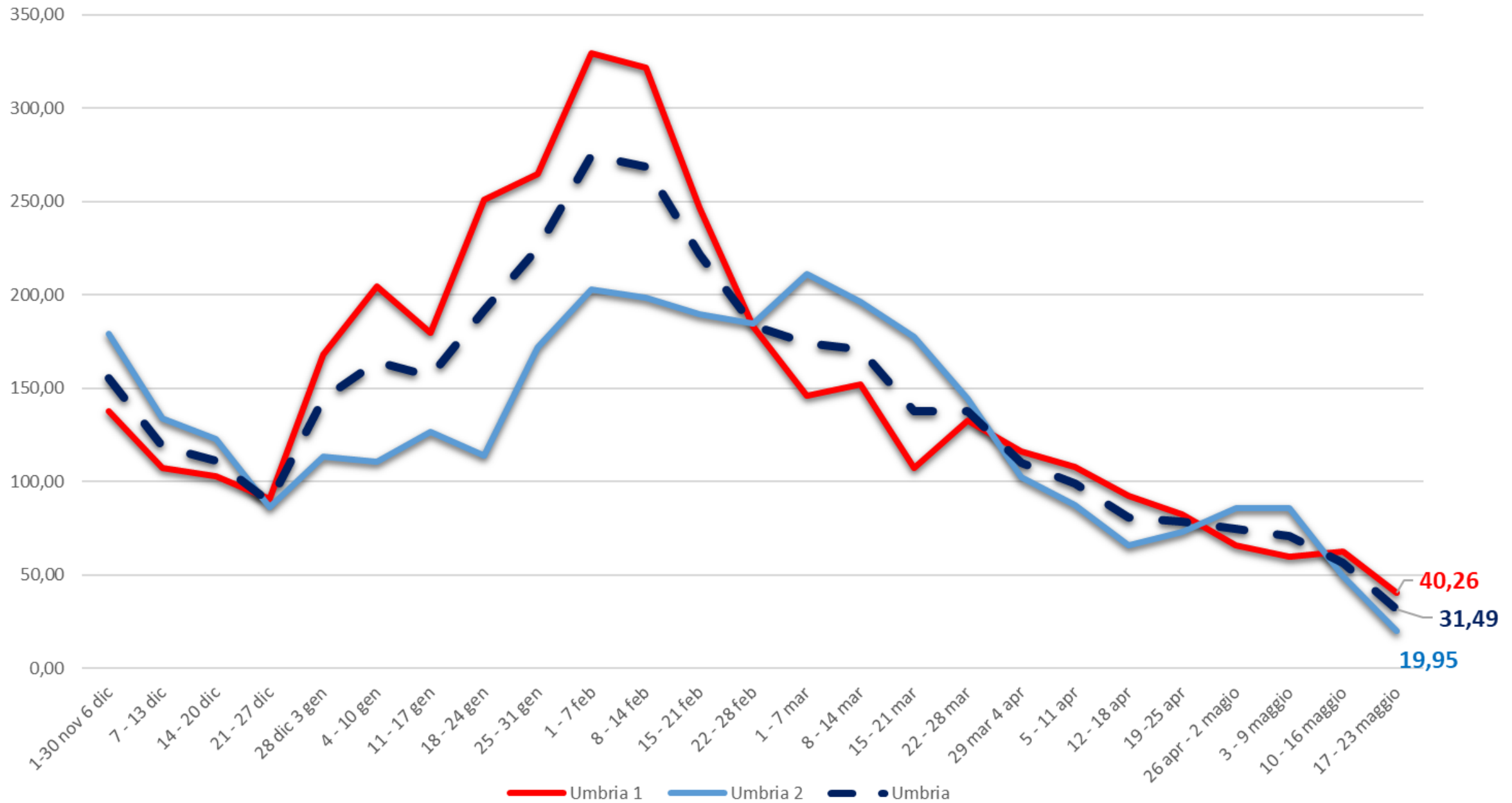


Tassi incidenza, standardizzati per età, per 100.000 abitanti nelle 12 regioni e nella P.A. di Trento
dalla settimana 39/2020 (21-27 settembre) alla settimana 19/2021 (10-16 maggio)

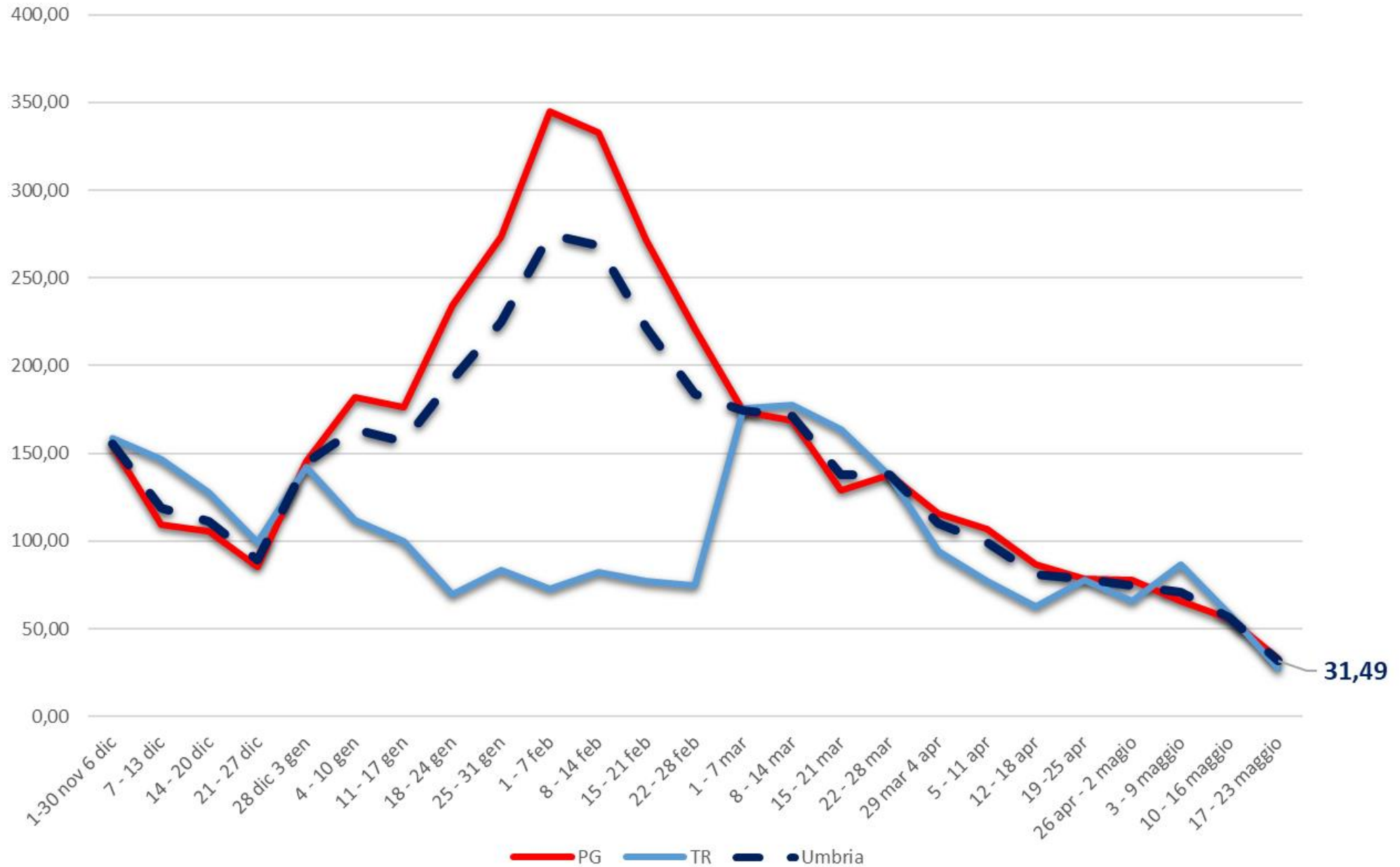


[Scaricare i dati](#) • Creato con [Datawrapper](#)

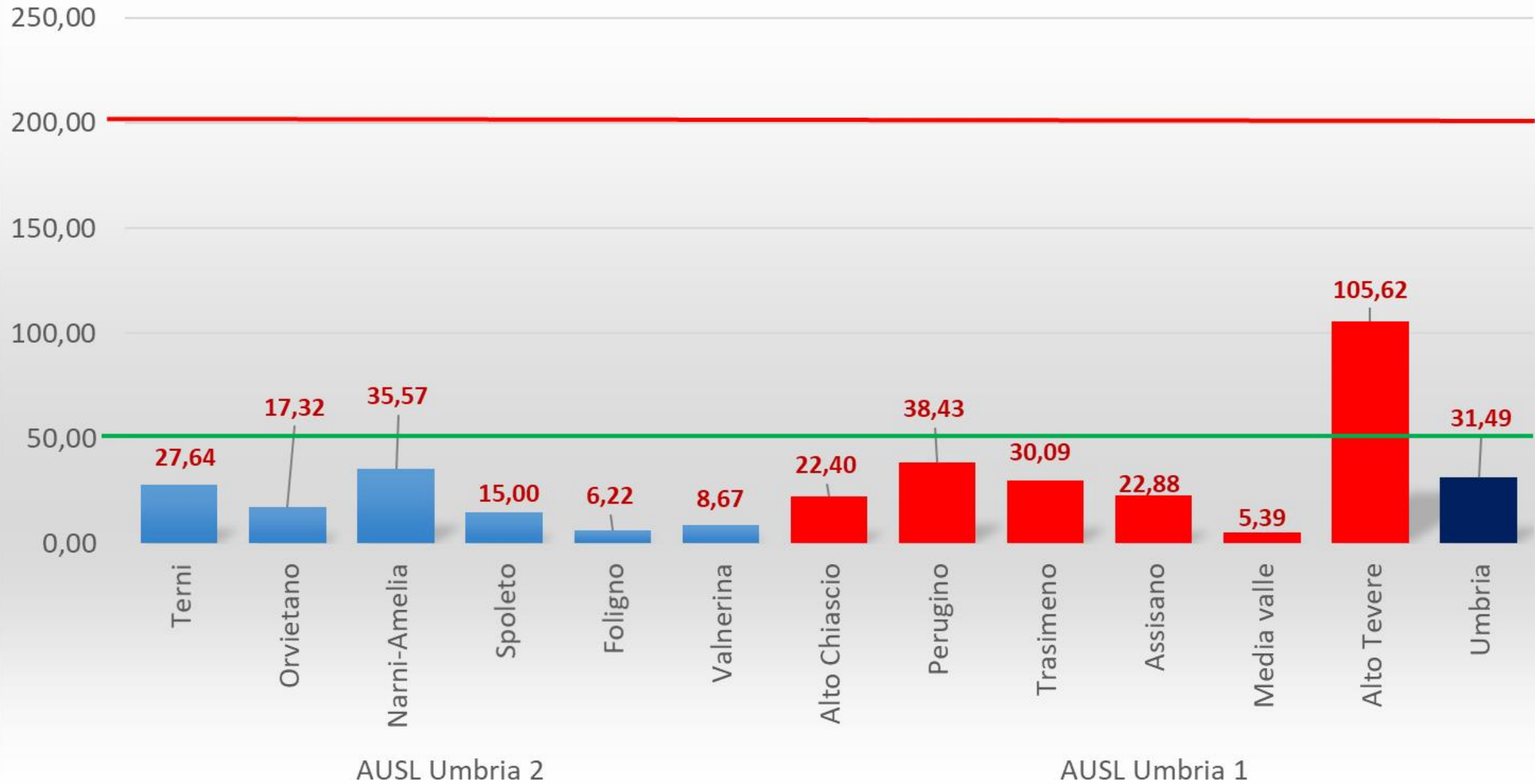
AUSL incidenza settimanale per 100.000 abitanti

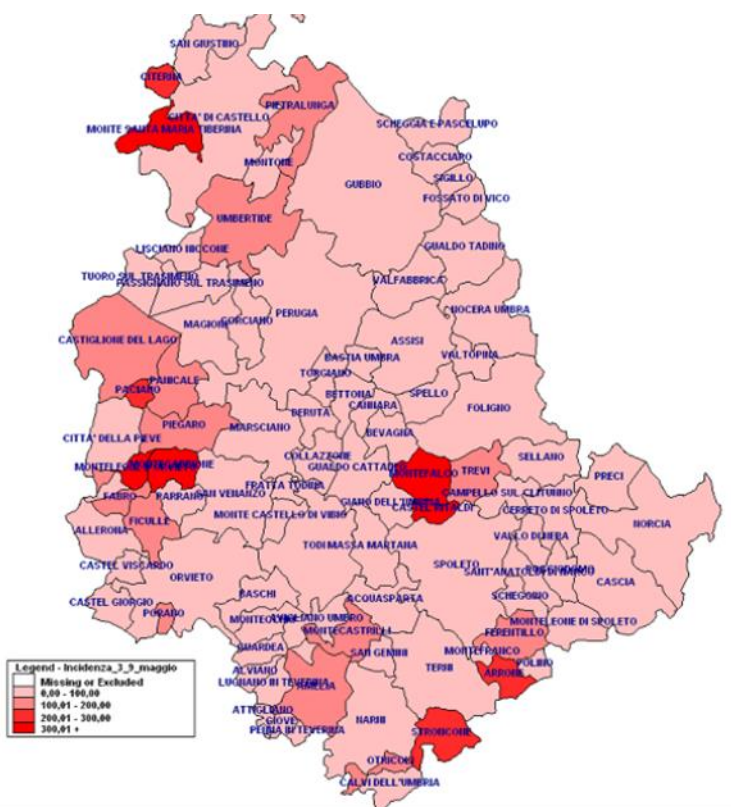


Province incidenza settimanale per 100.000 abitanti

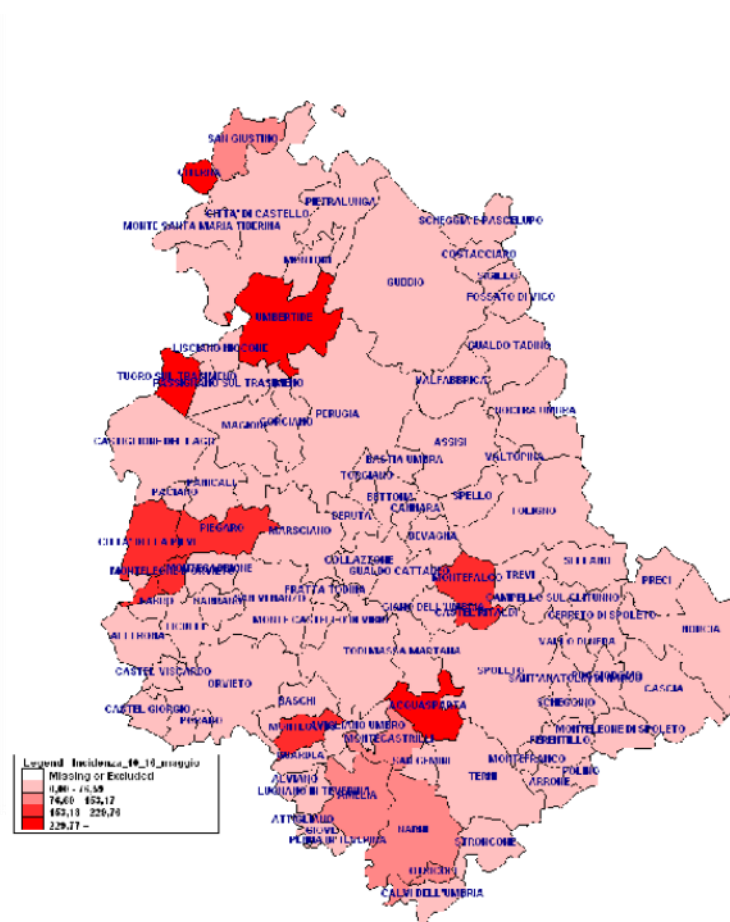


Incidenza settimanale per 100.000 abitanti per distretto sanitario

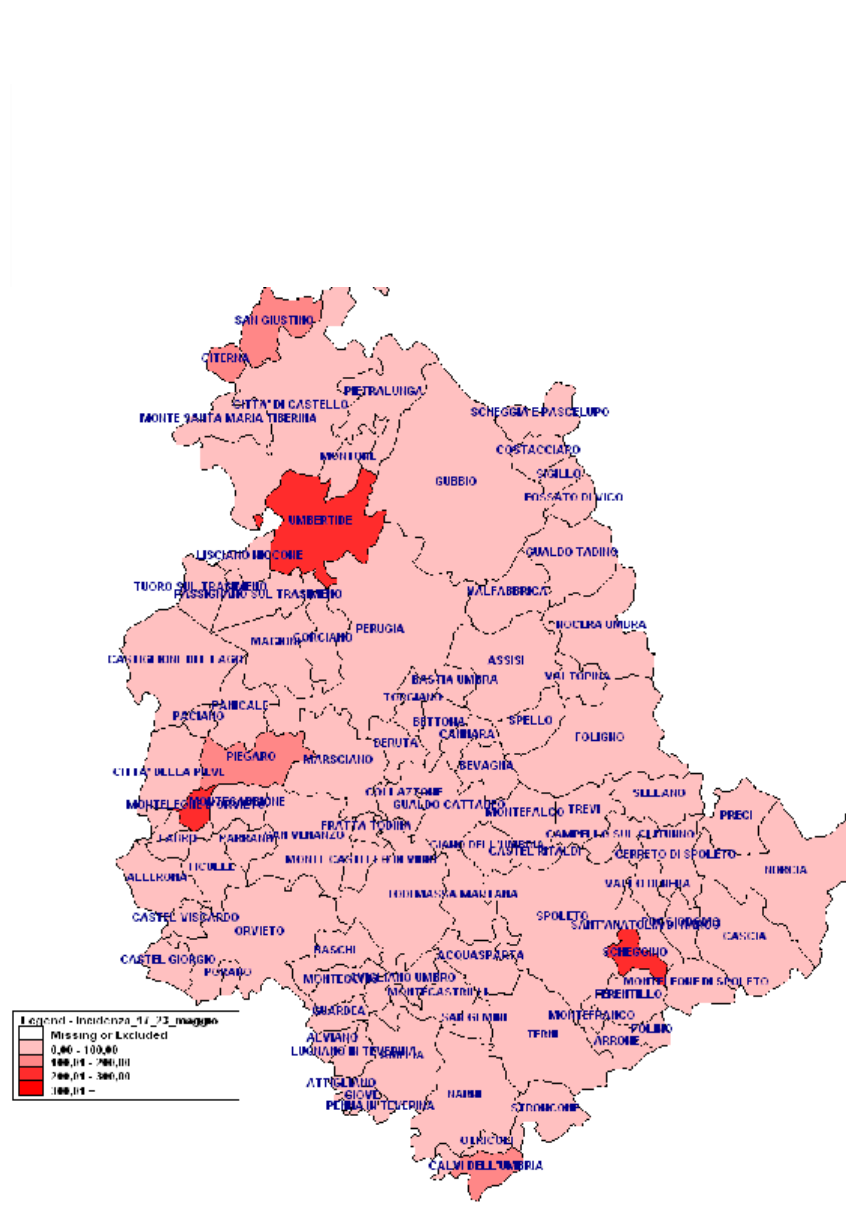




71,02

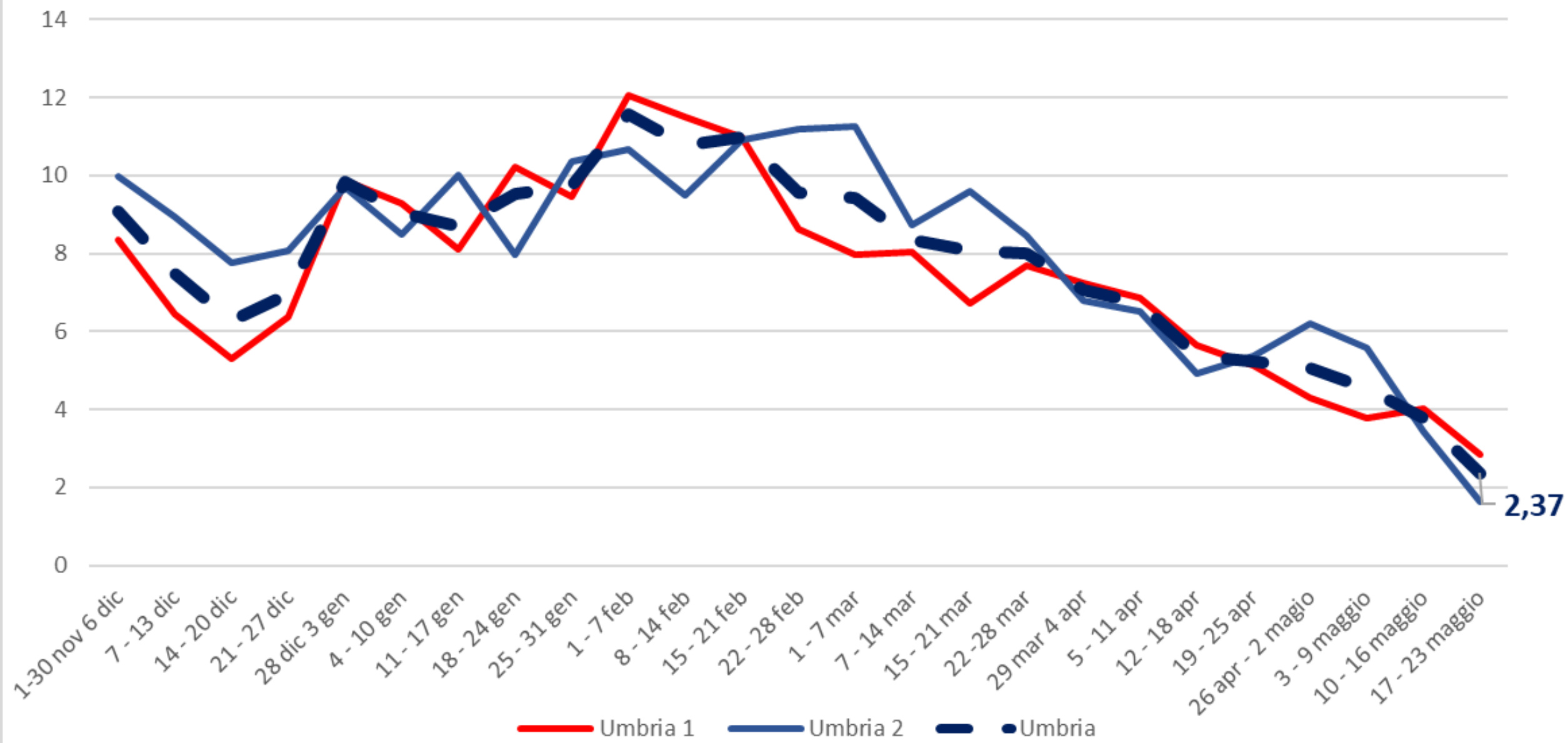


56,54

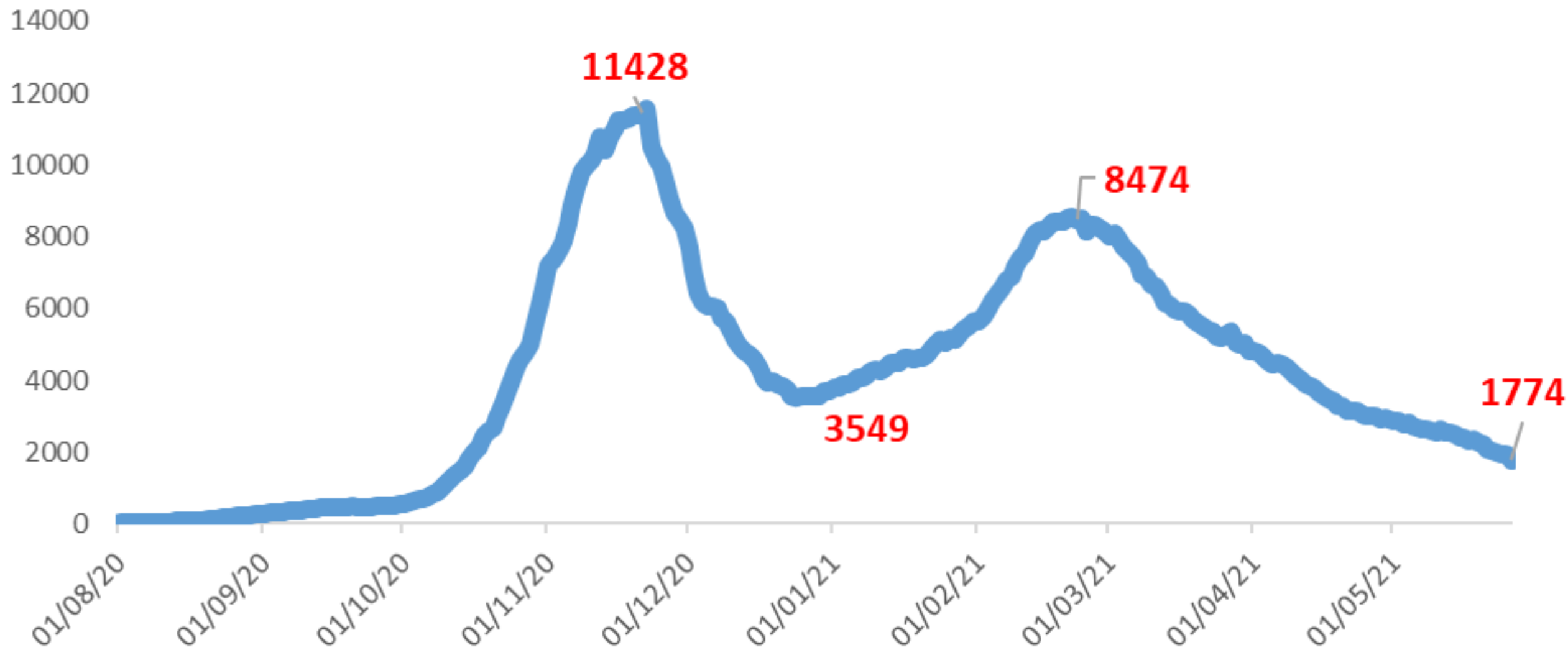


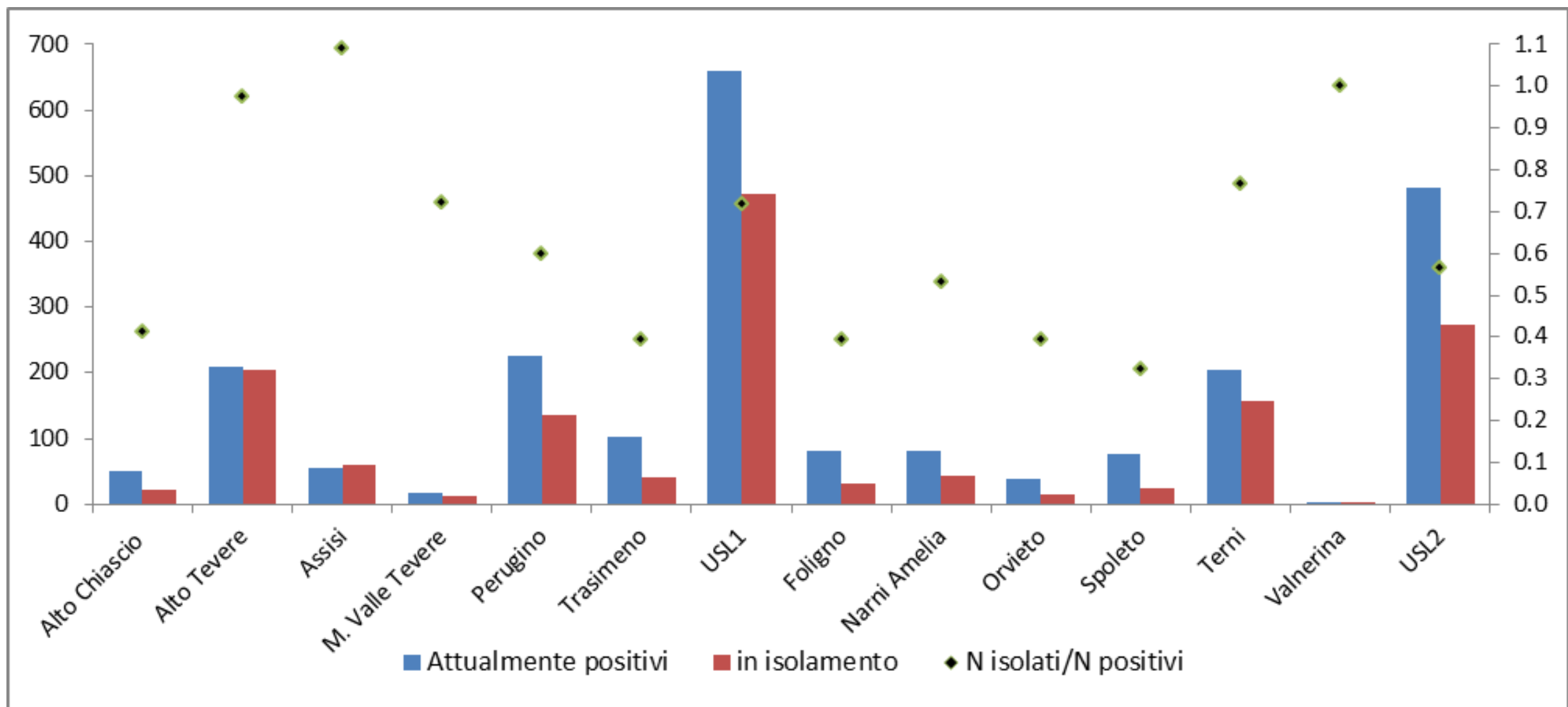
31,49

Rapporto Positivi/Tamponi per AUSL

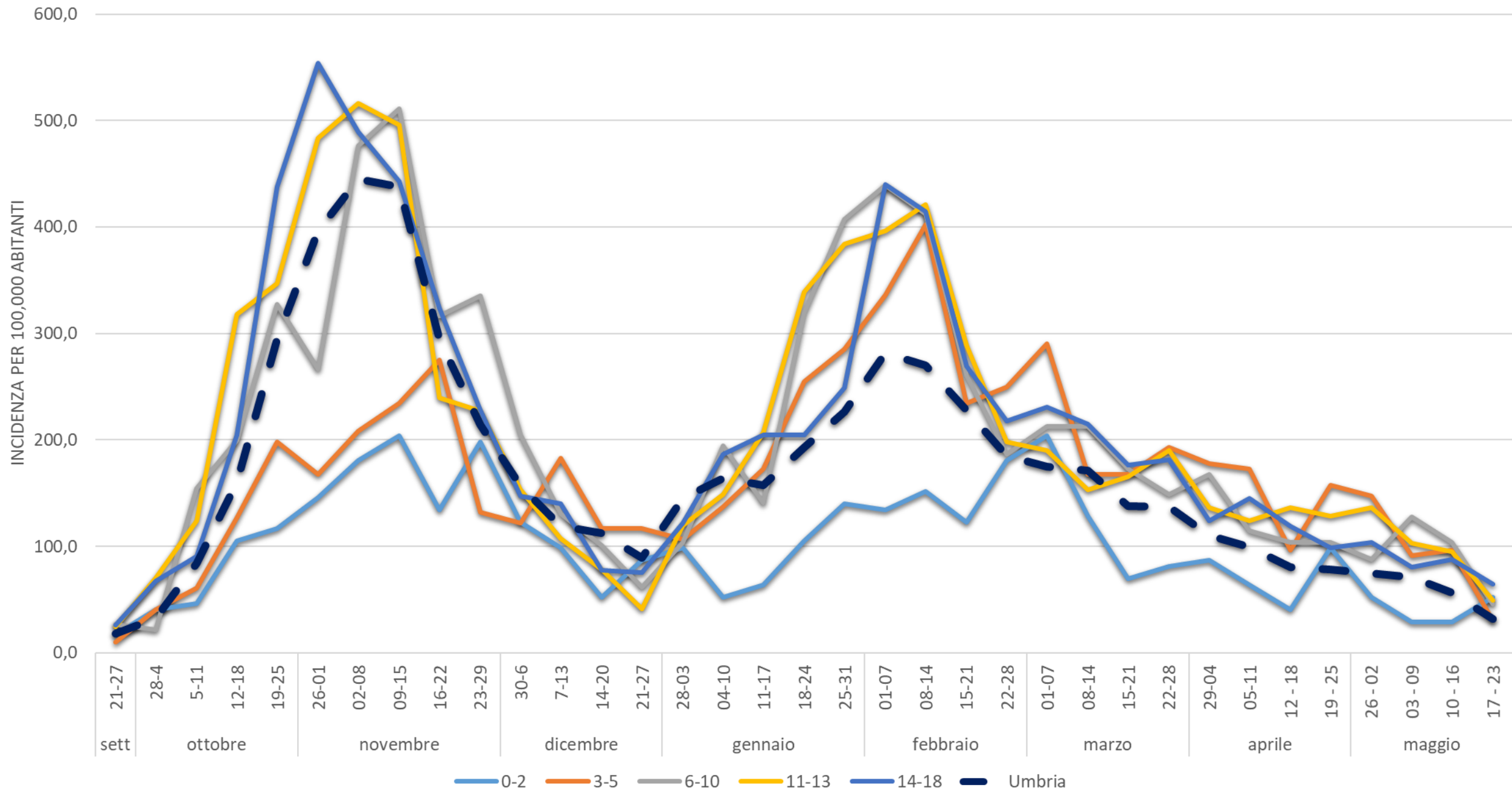


Attualmente positivi

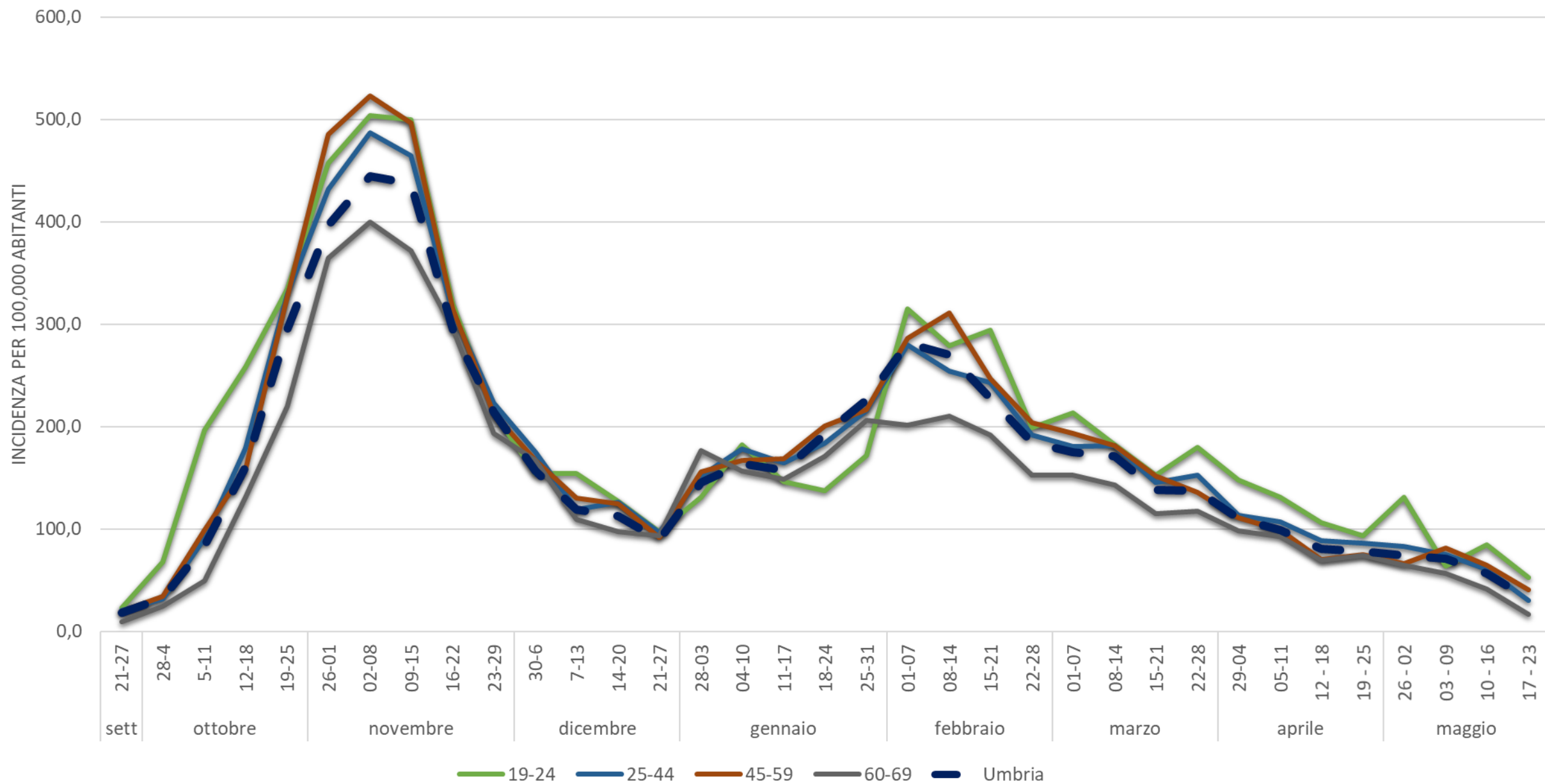




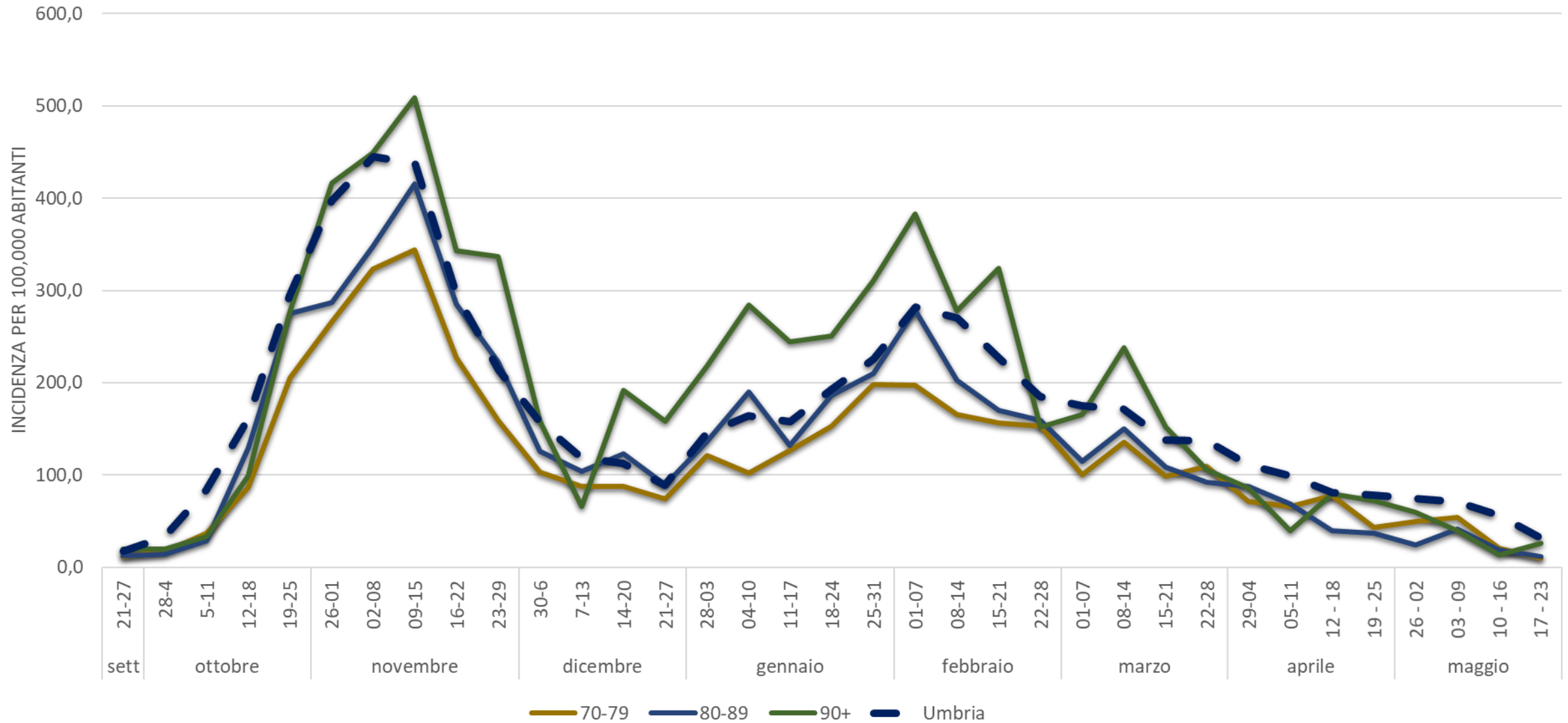
Incidenza settimanale per 100.000 abitanti 0 – 18 anni



Incidenza settimanale per 100.000 abitanti 19 – 69 anni



Incidenza per 100.000 abitanti 70 anni e più

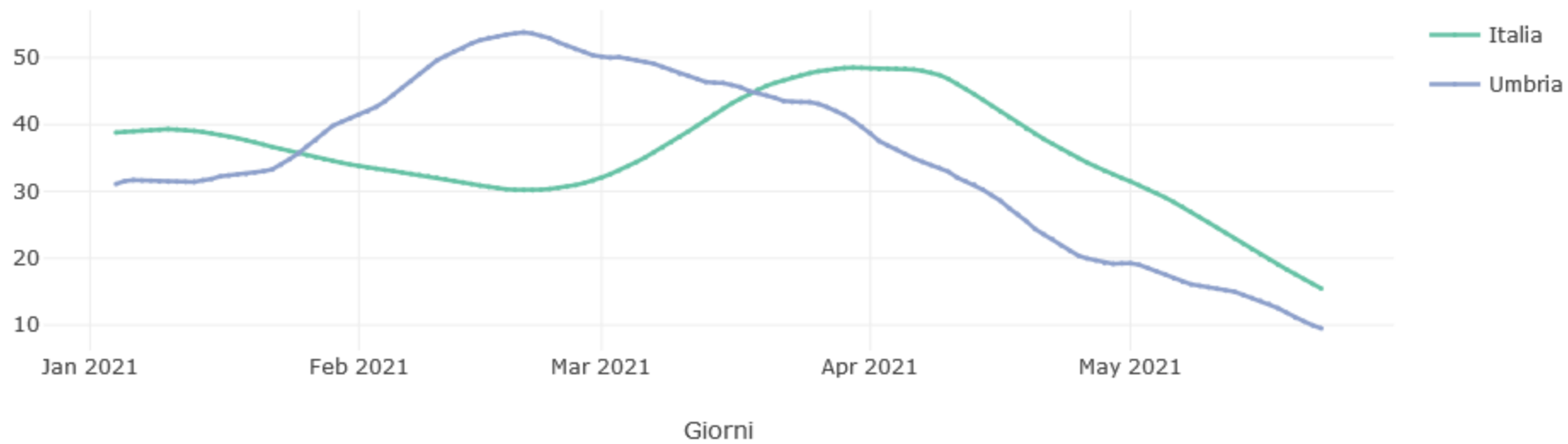


Ricoveri ordinari

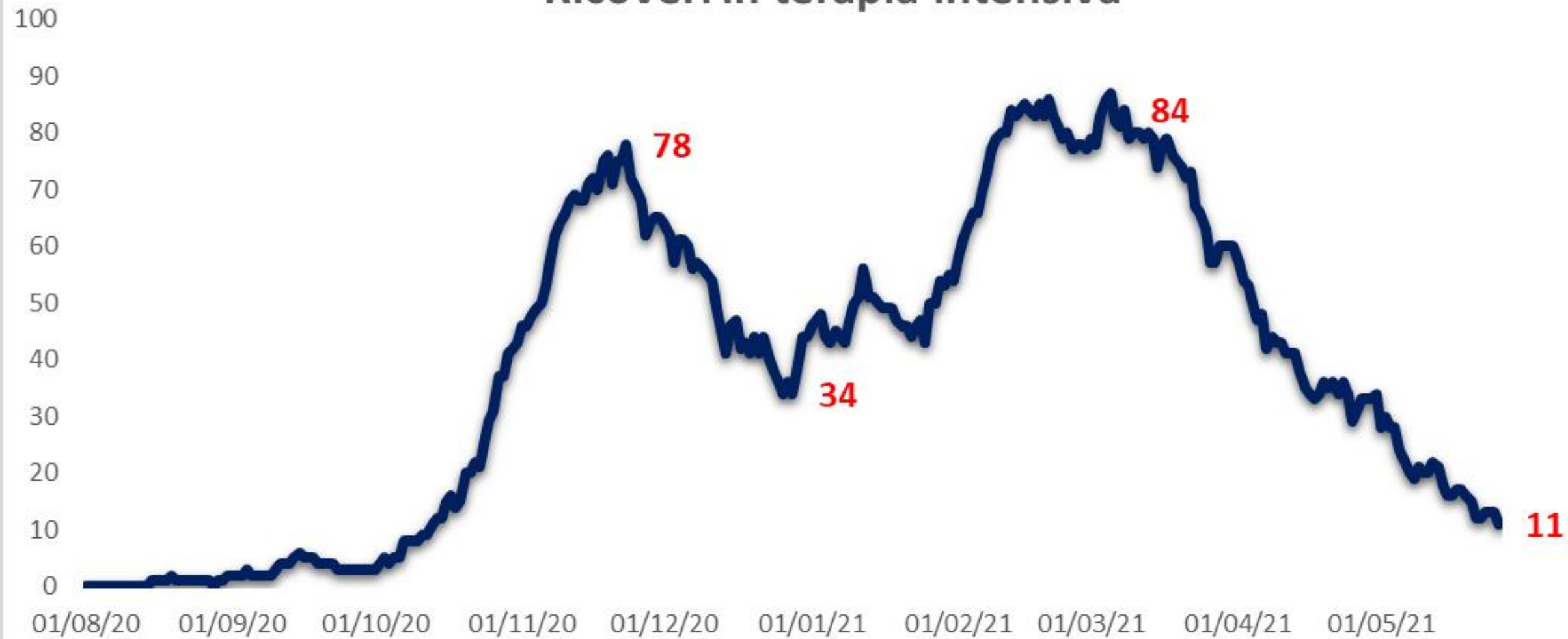


Tasso Prevalenza Ricoverati non TI MM 7 (100.000 ab)

Tasso Prevalenza Ricoverati non TI MM 7 (100.000 ab)

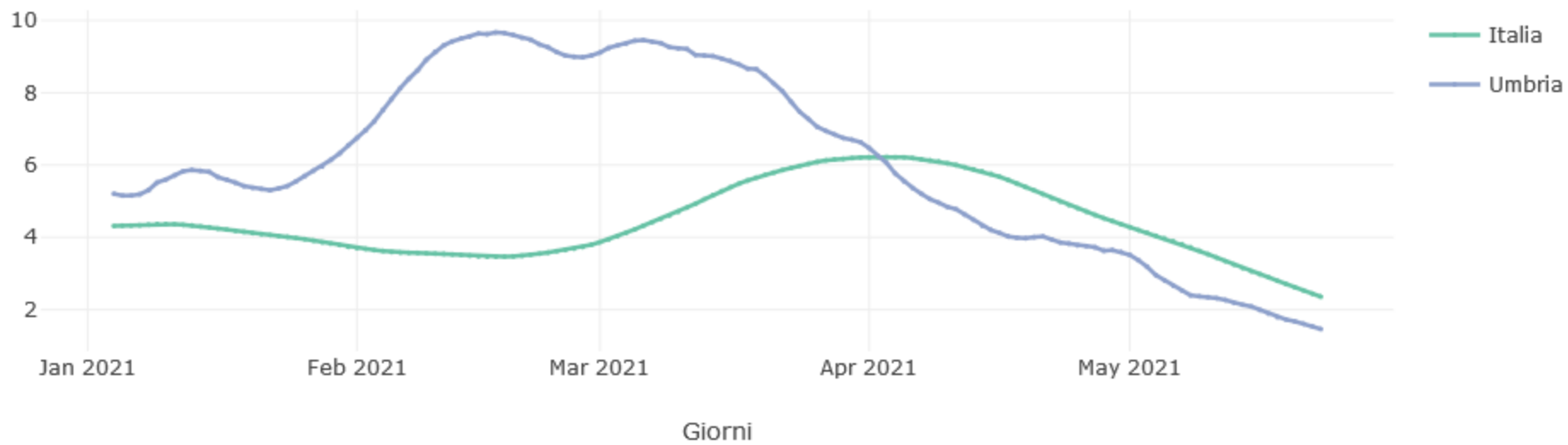


Ricoveri in terapia intensiva



Tasso Prevalenza Ricoverati TI MM 7 (100.000 ab)

Tasso Prevalenza Ricoverati TI MM 7 (100.000 ab)



Decessi



