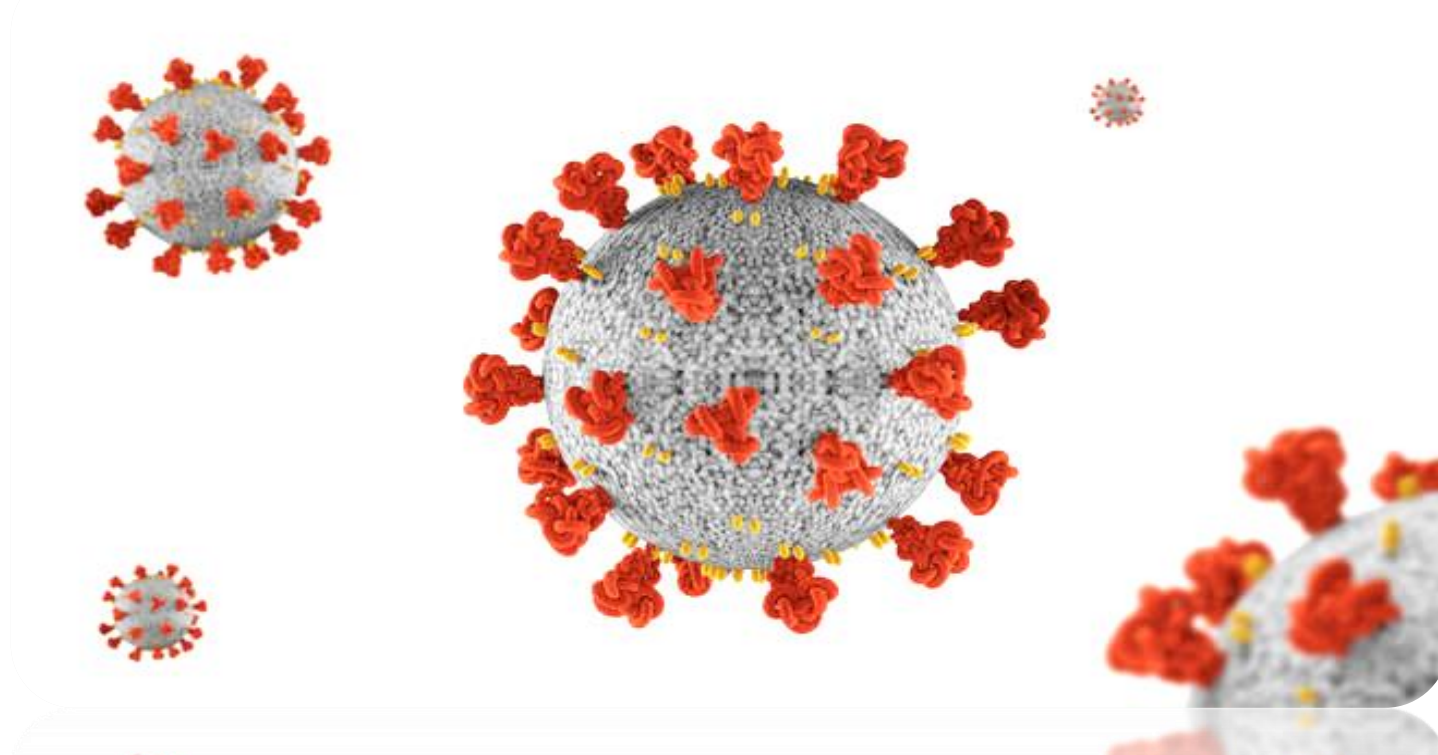
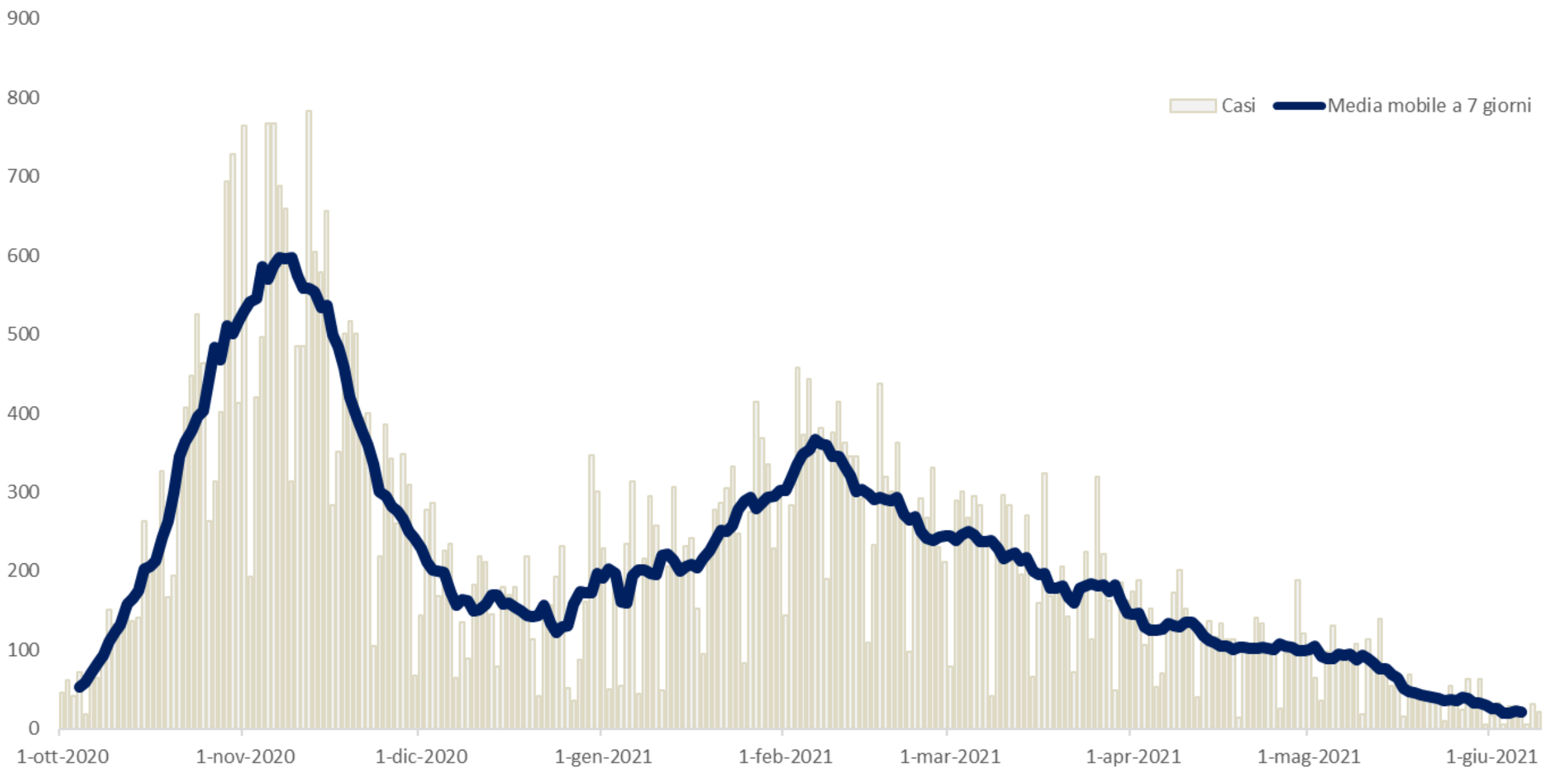


# Analisi nucleo epidemiologico Sars- Cov 2 in Umbria



*10 giugno 2021*

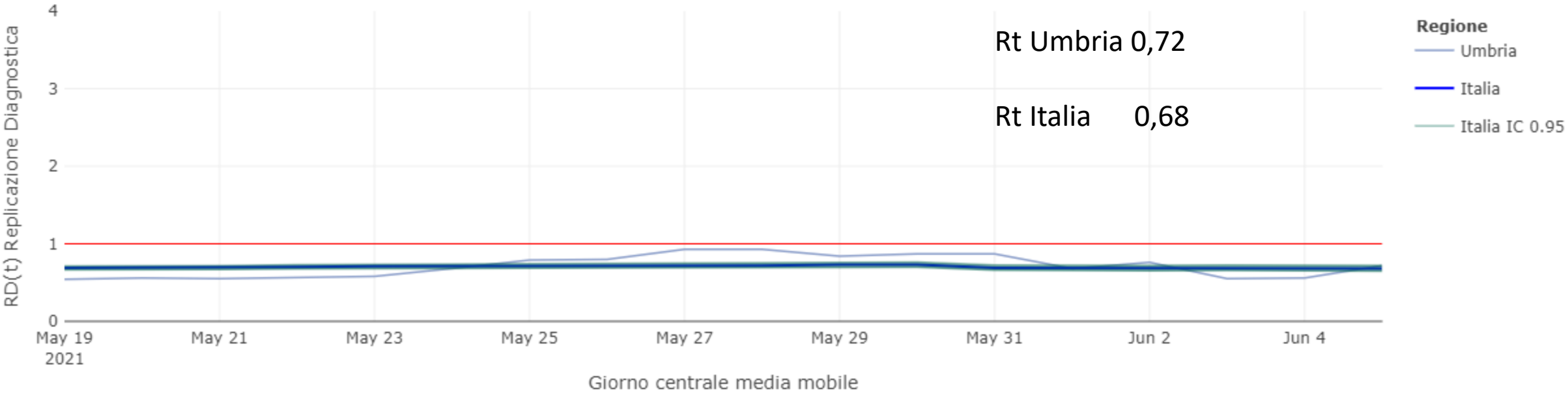
*Fonte dati integrata: DB COVID – Umbria Digitale*



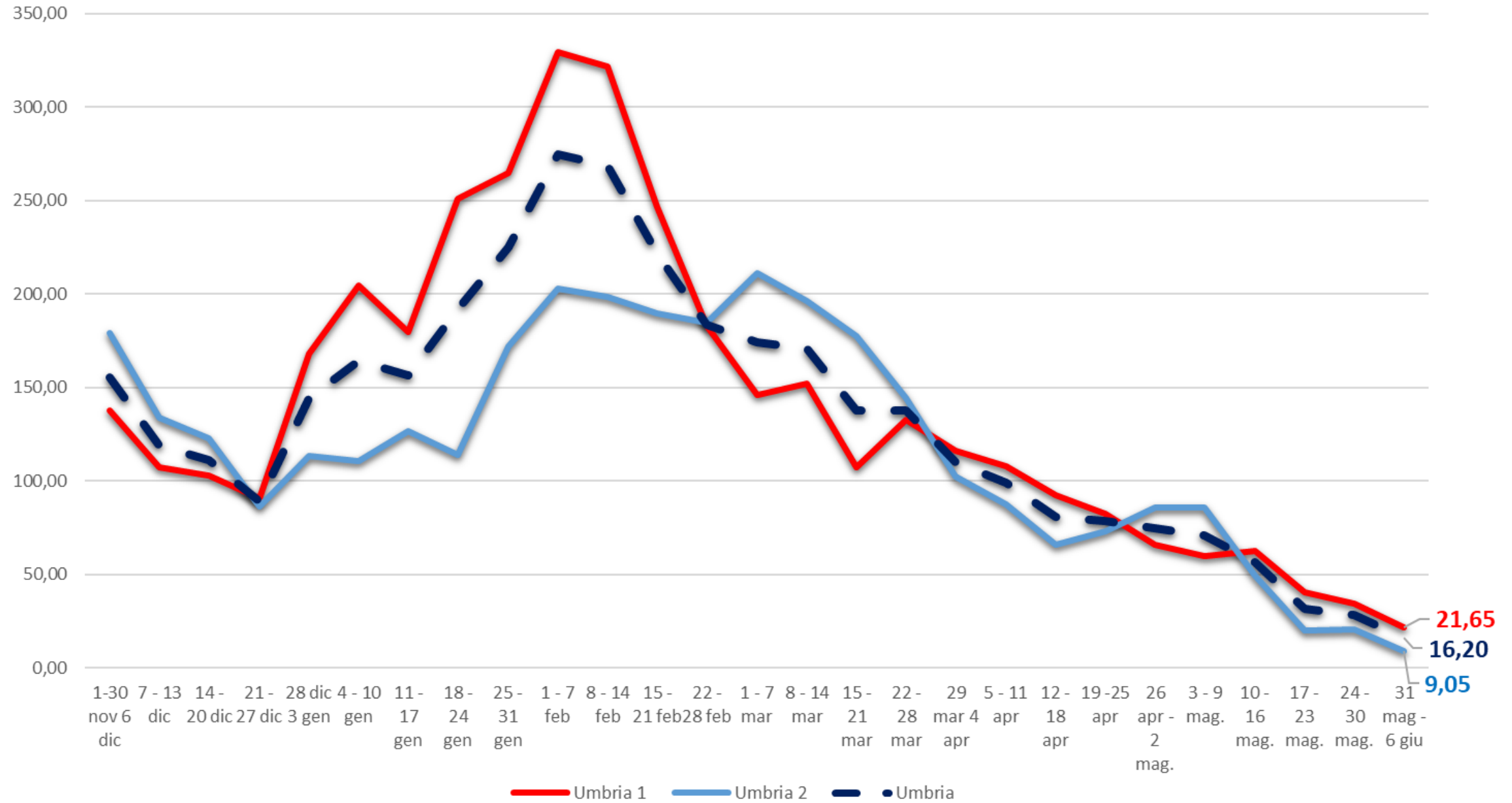
Tasso Incidenza Positivi MM 7 (100.000 ab)



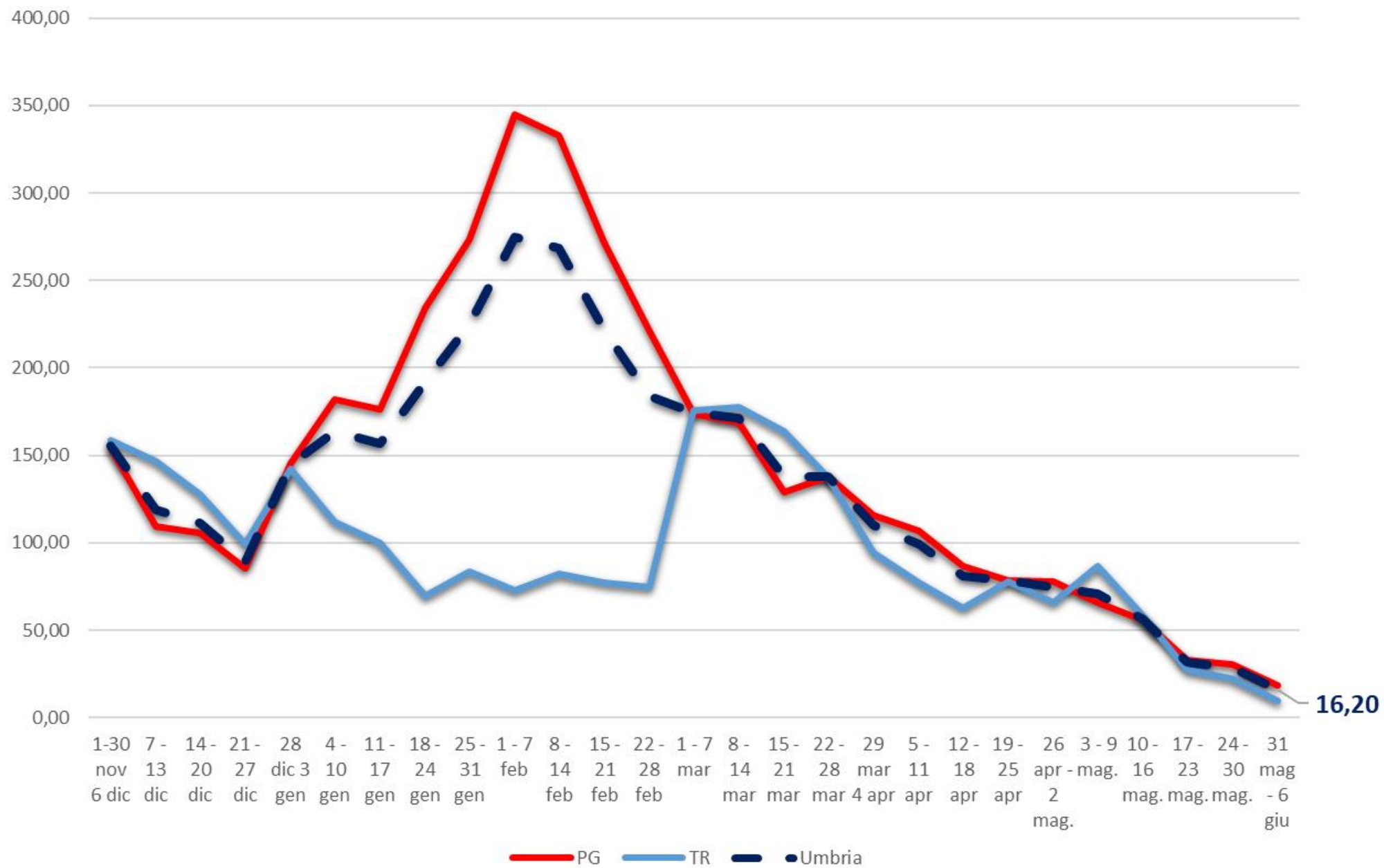
RD(t) Indice di Replicazione Diagnostica a lag 7 giorni (medie mobili a 7 giorni)



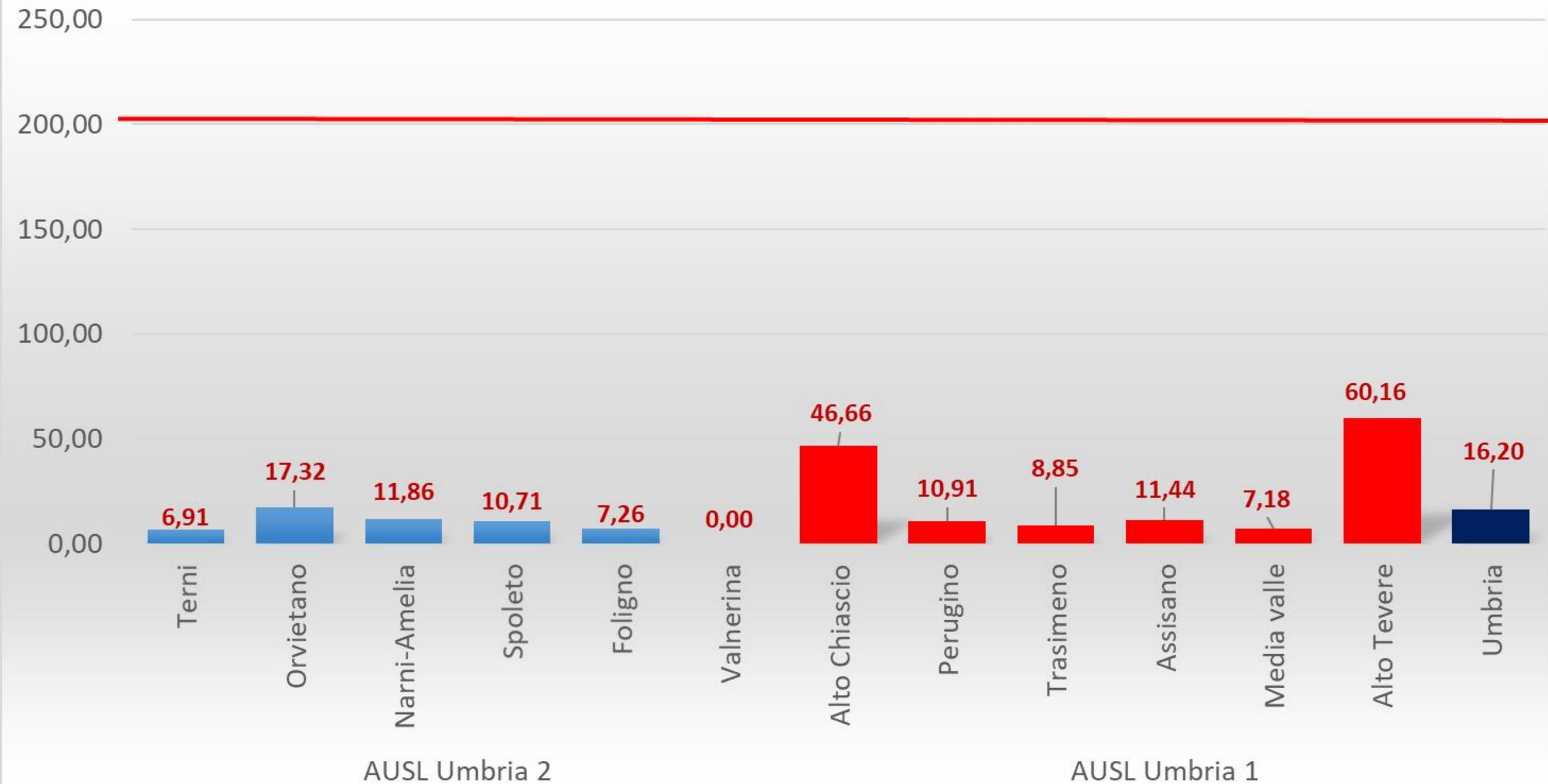
# AUSL incidenza settimanale per 100.000 abitanti



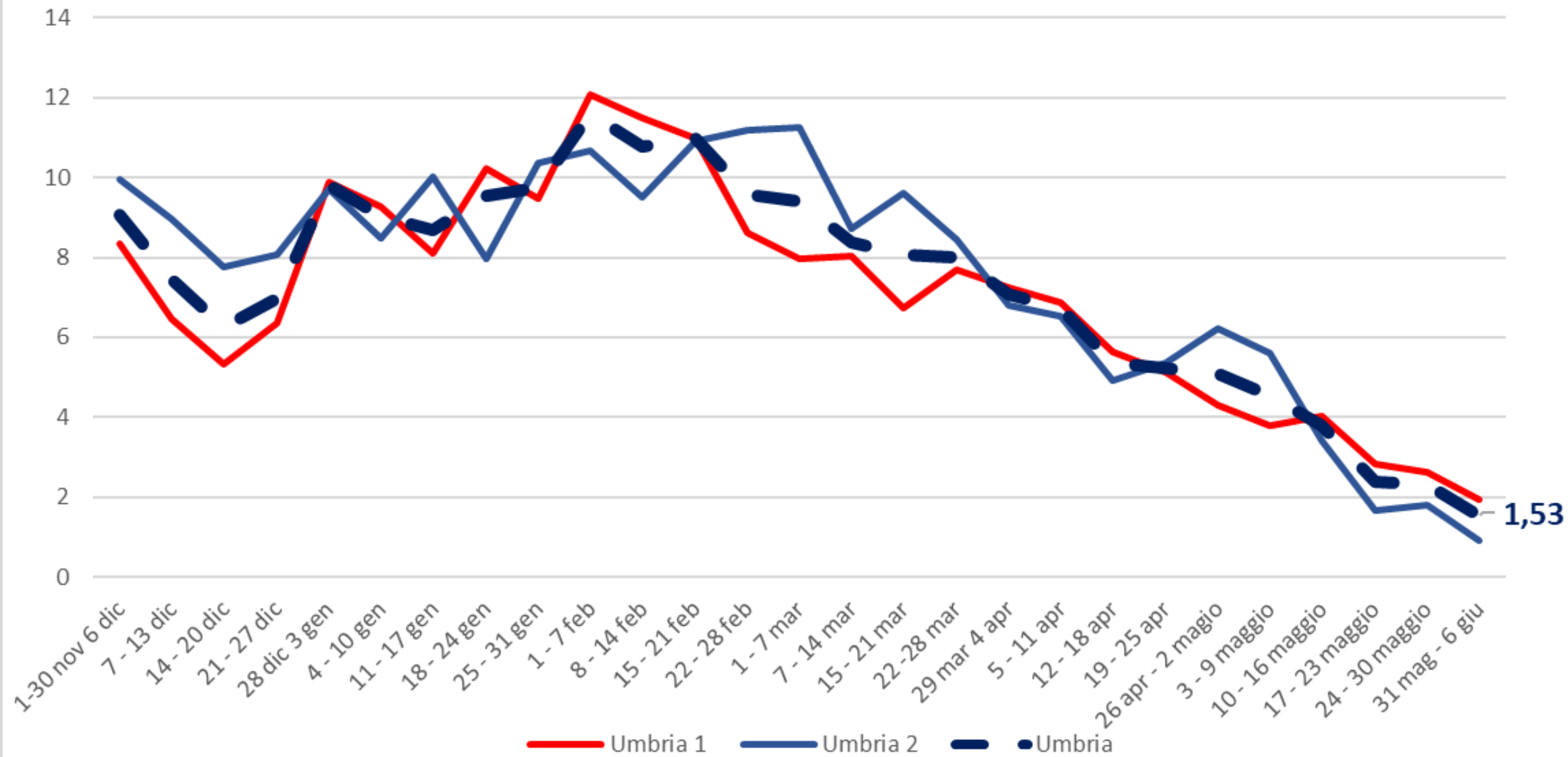
# Province incidenza settimanale per 100.000 abitanti



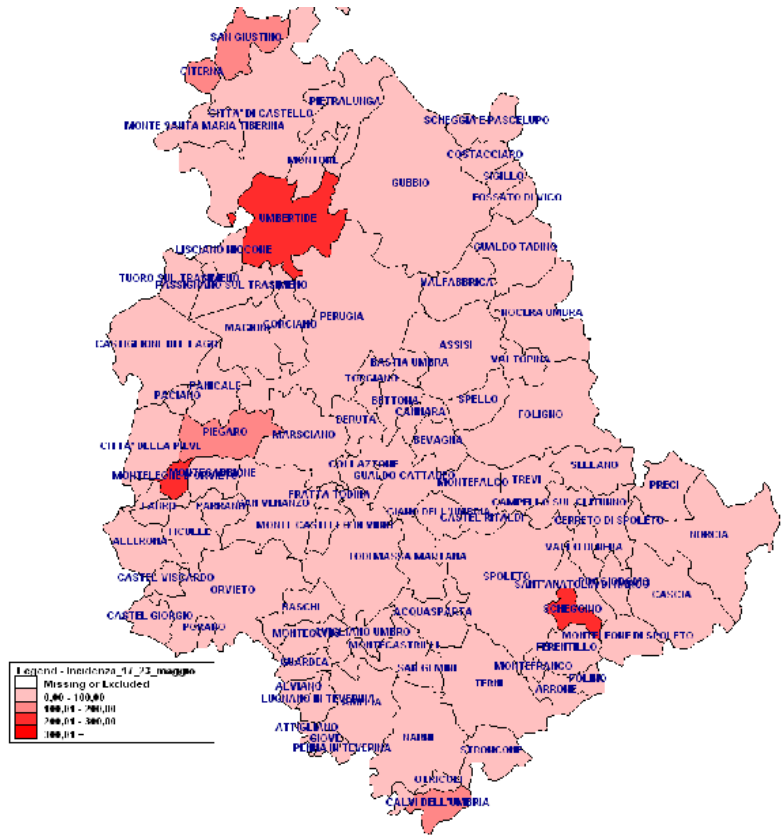
# Incidenza settimanale per 100.000 abitanti per distretto sanitario



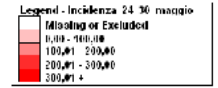
# Rapporto Positivi/Tamponi per AUSL



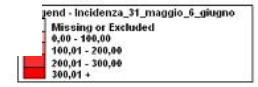




31,49

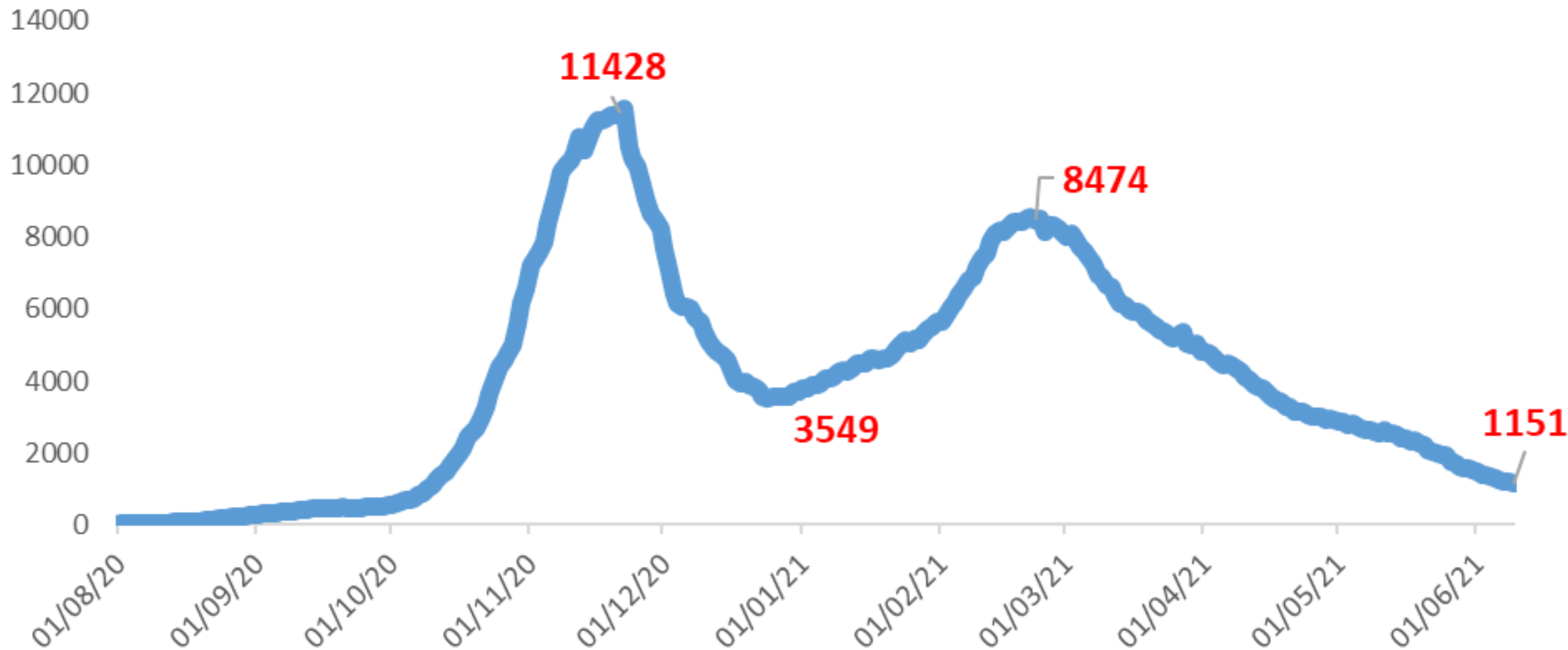


28,50

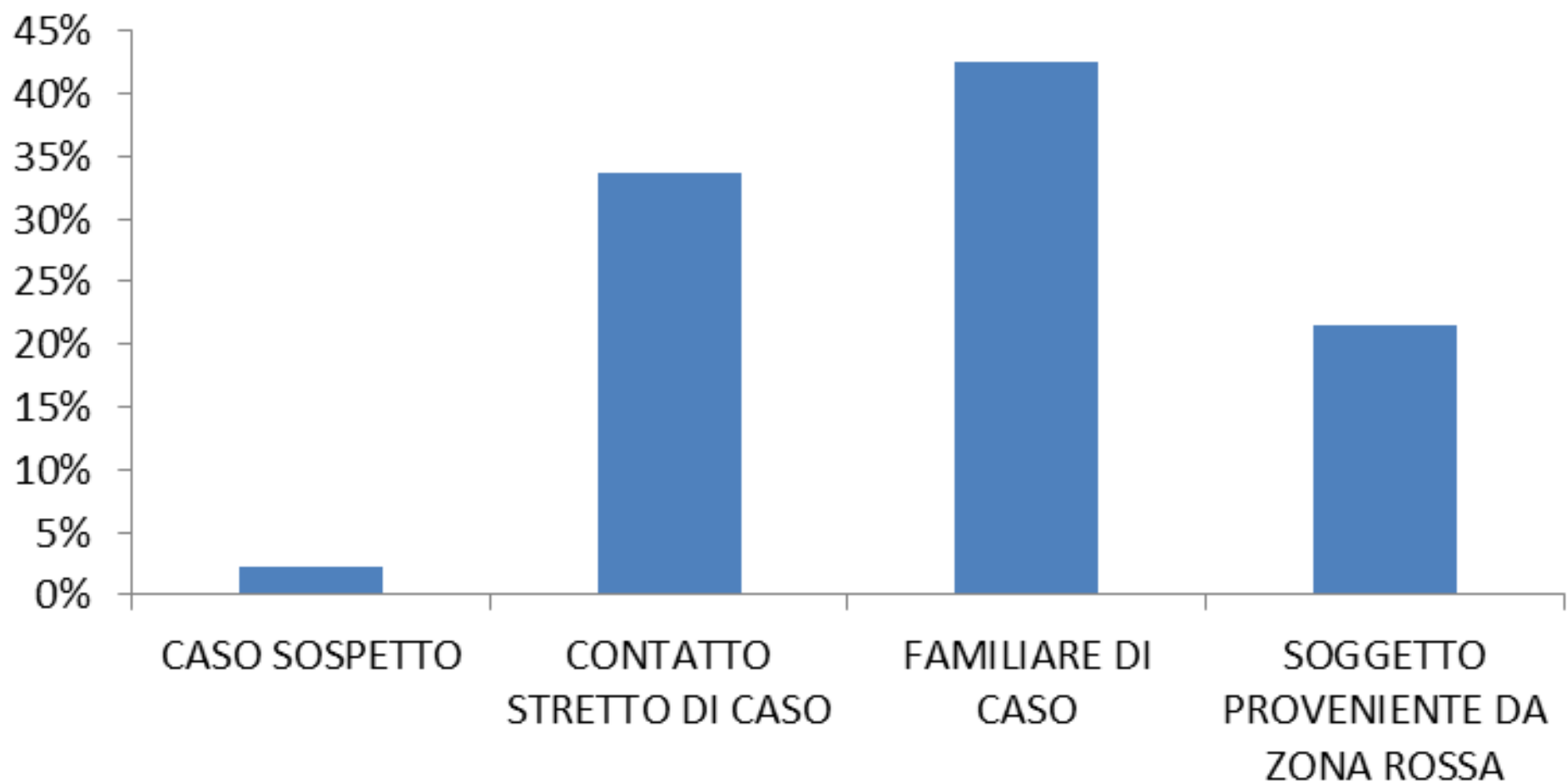


16,20

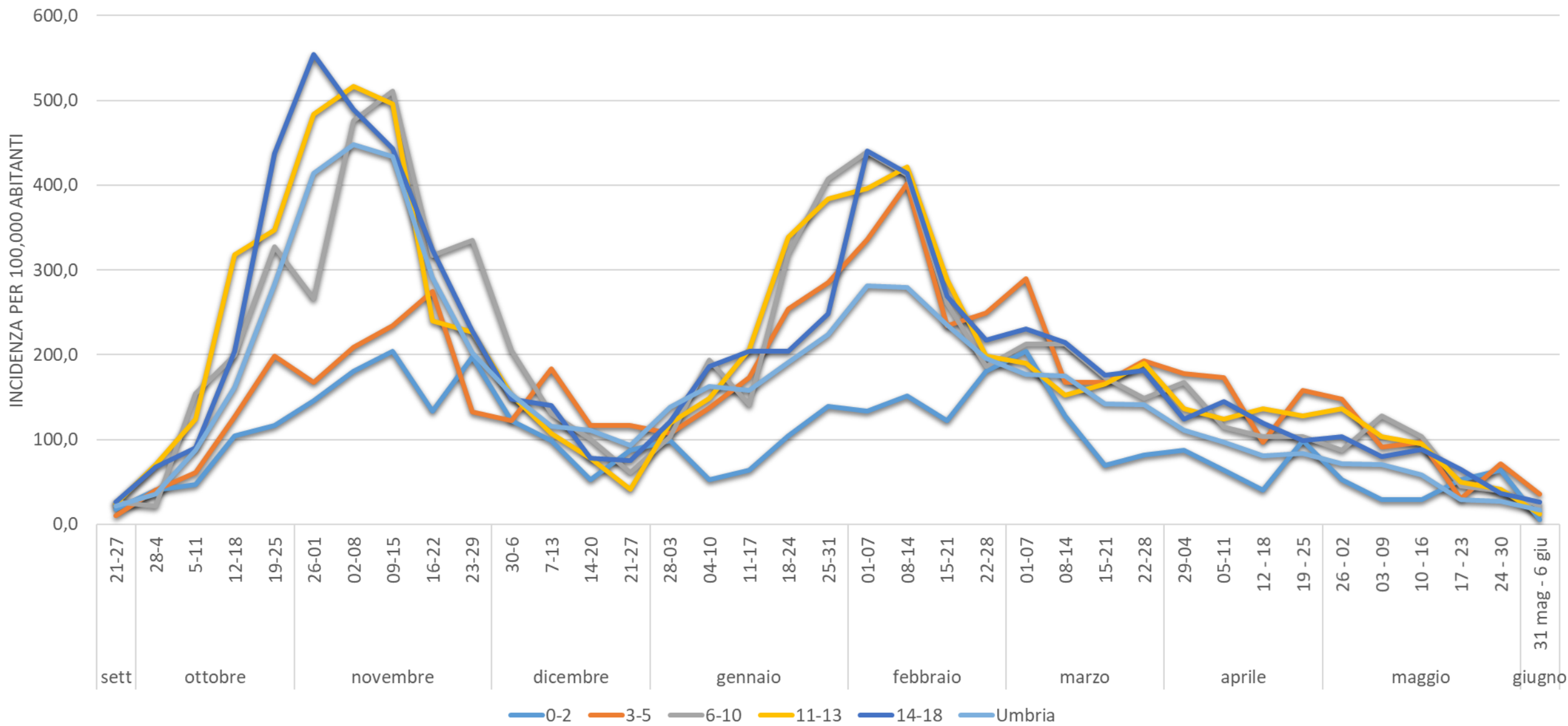
# Attualmente positivi



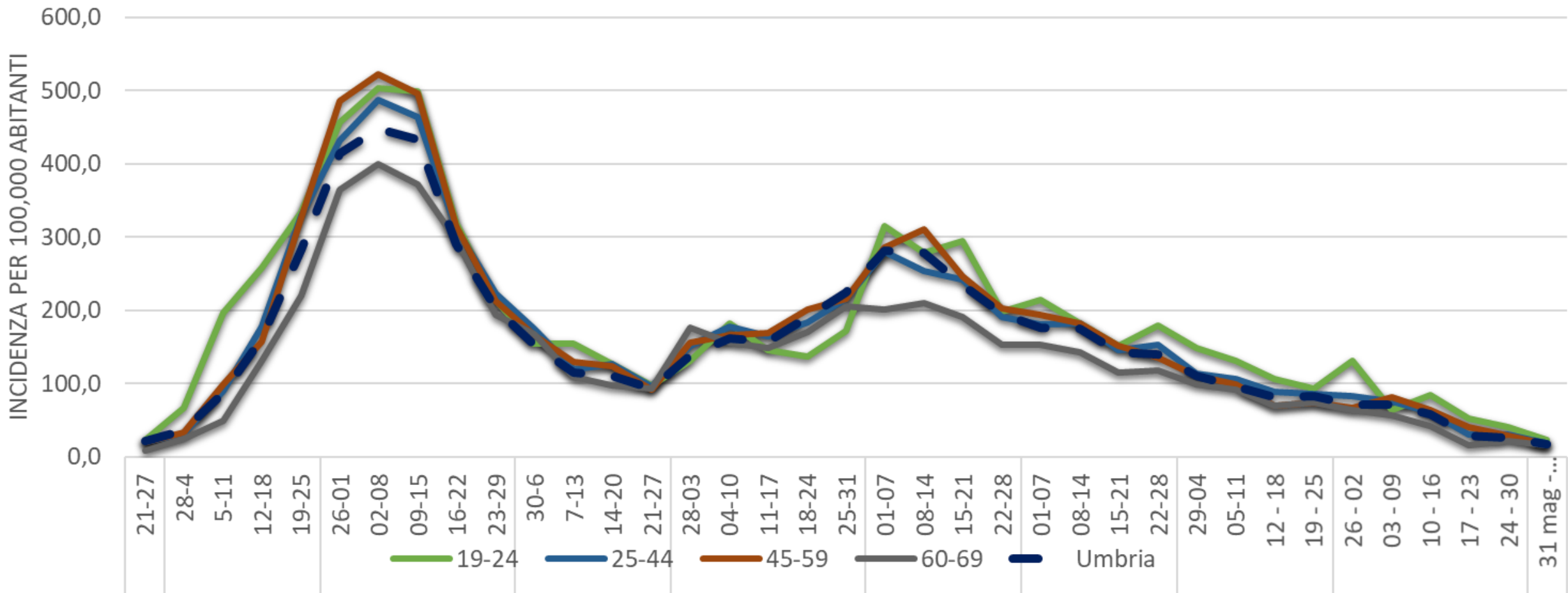
## Soggetti in isolamento fiduciario



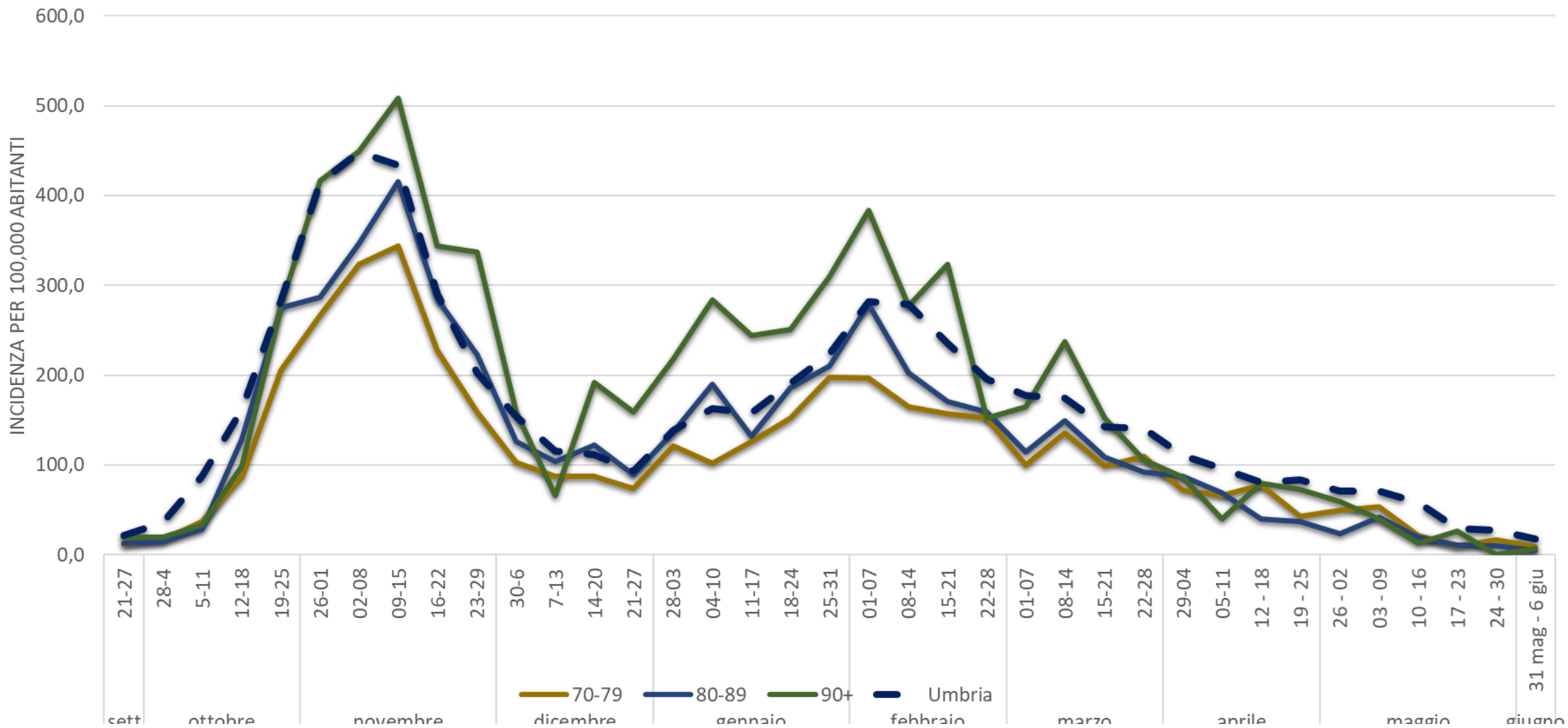
## Incidenza settimanale per 100.000 abitanti 0 – 18 anni



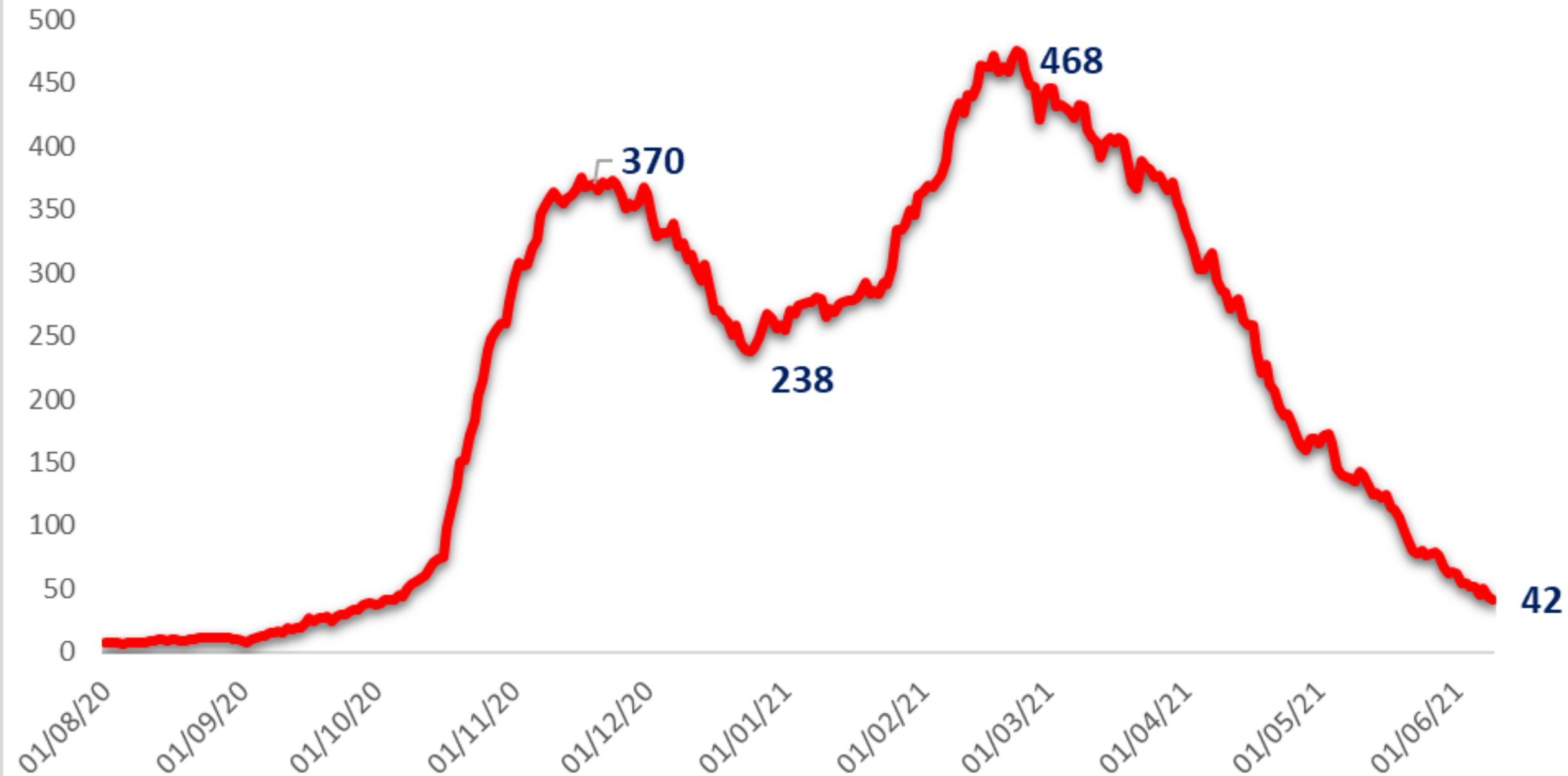
# Incidenza settimanale per 100.000 abitanti 19 – 69 anni



# Incidenza settimanale per 100.000 abitanti 70 anni e più

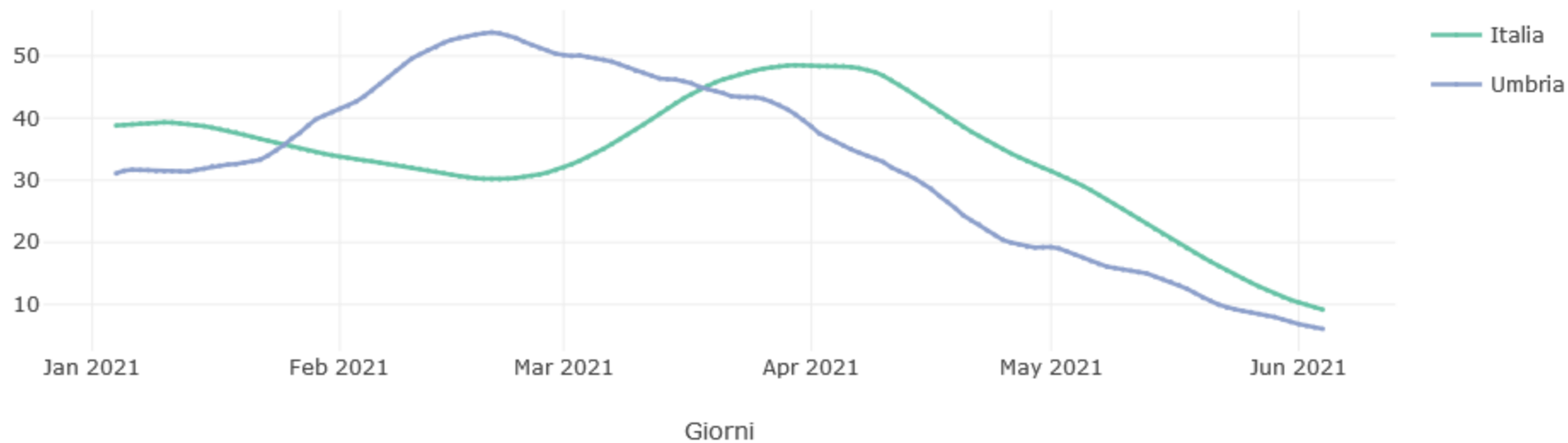


## Ricoveri ordinari



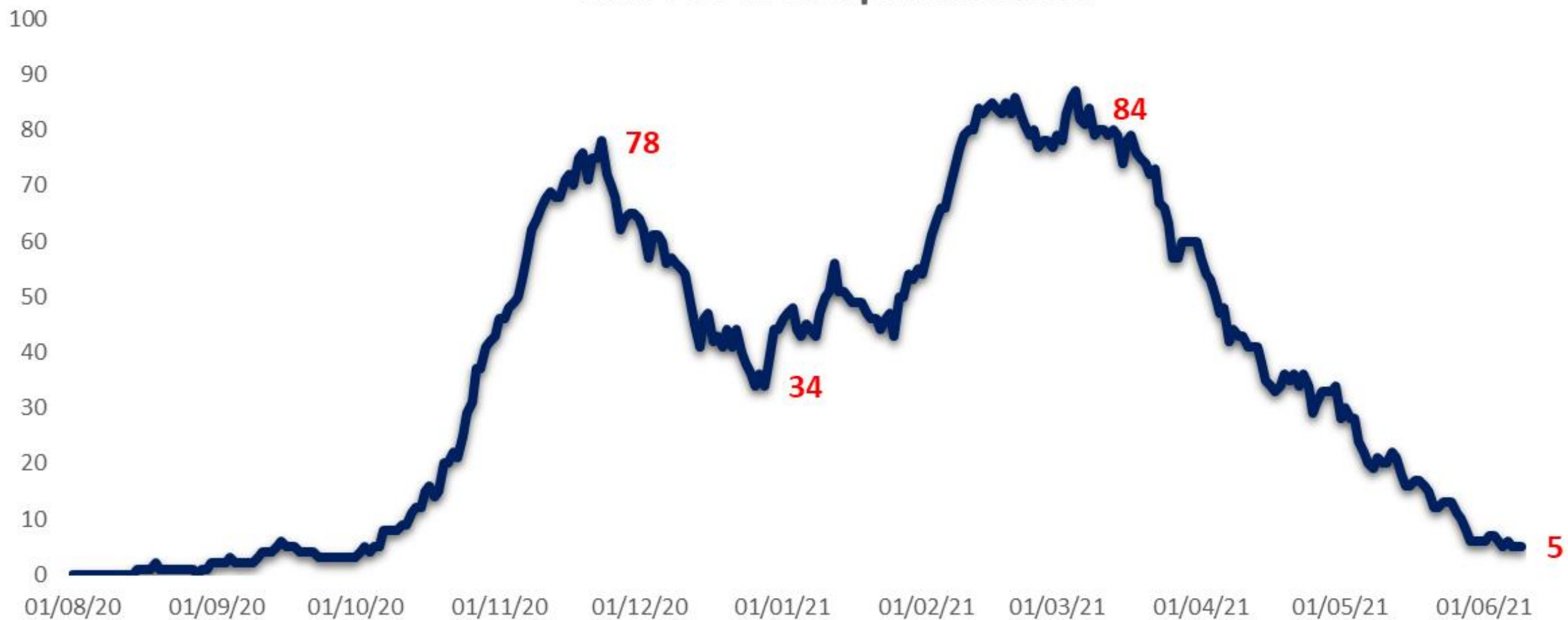
Tasso Prevalenza Ricoverati non TI MM 7 (100.000 ab)

Tasso Prevalenza Ricoverati non TI MM 7 (100.000 ab)



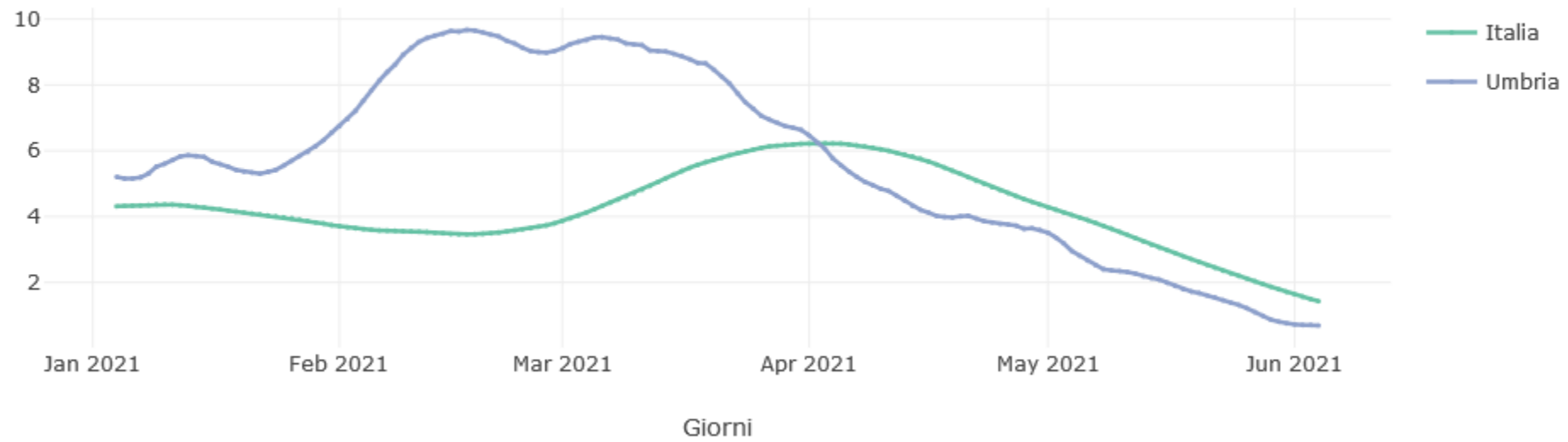


## Ricoveri in terapia intensiva

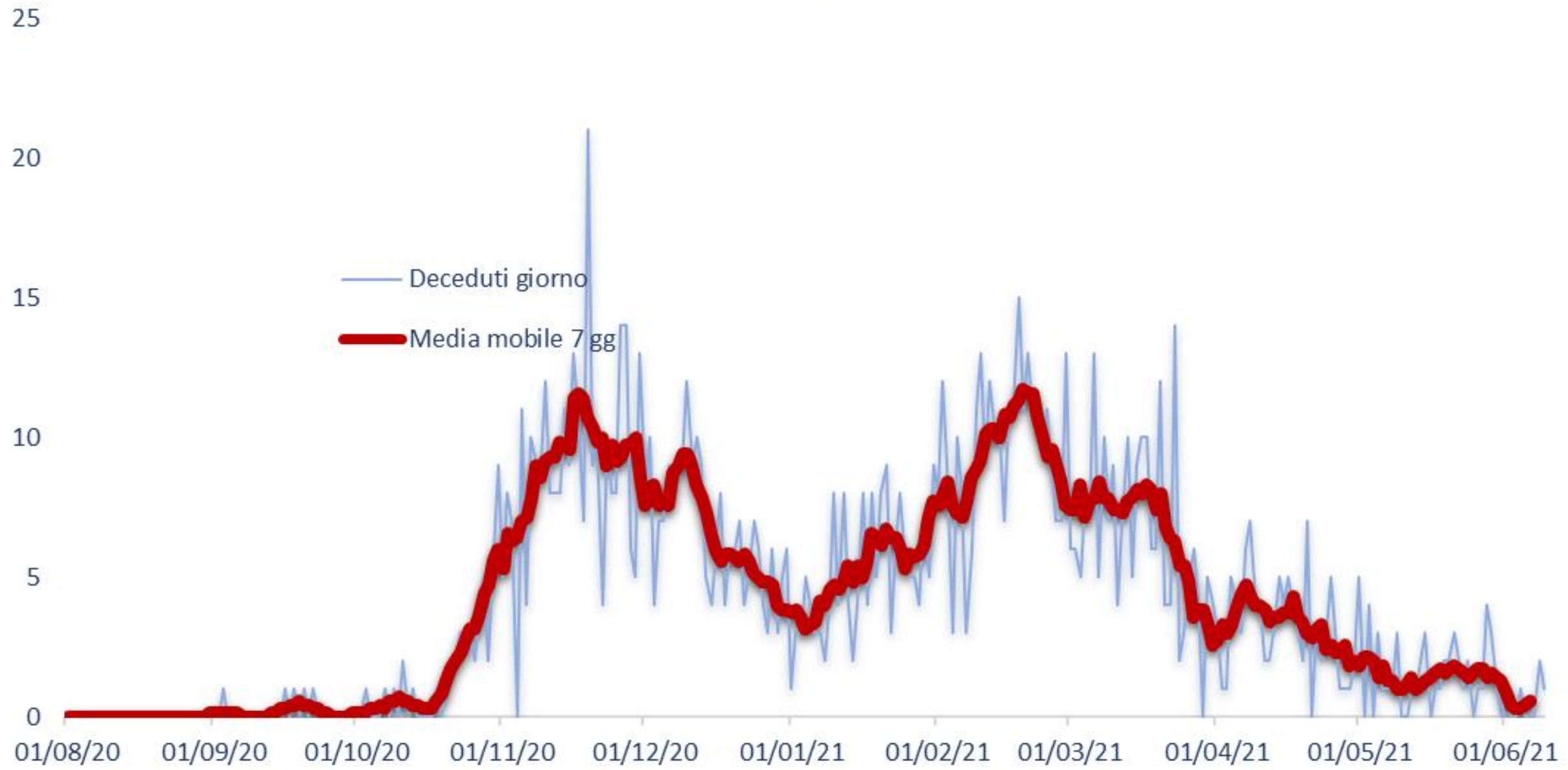


Tasso Incidenza Ricoverati TI MM 7 (100.000 ab)  
Tasso Prevalenza Ricoverati TI MM 7 (100.000 ab)

Tasso Prevalenza Ricoverati TI MM 7 (100.000 ab)



# Decessi



# Andamento casi positivi e temperature - Umbria

