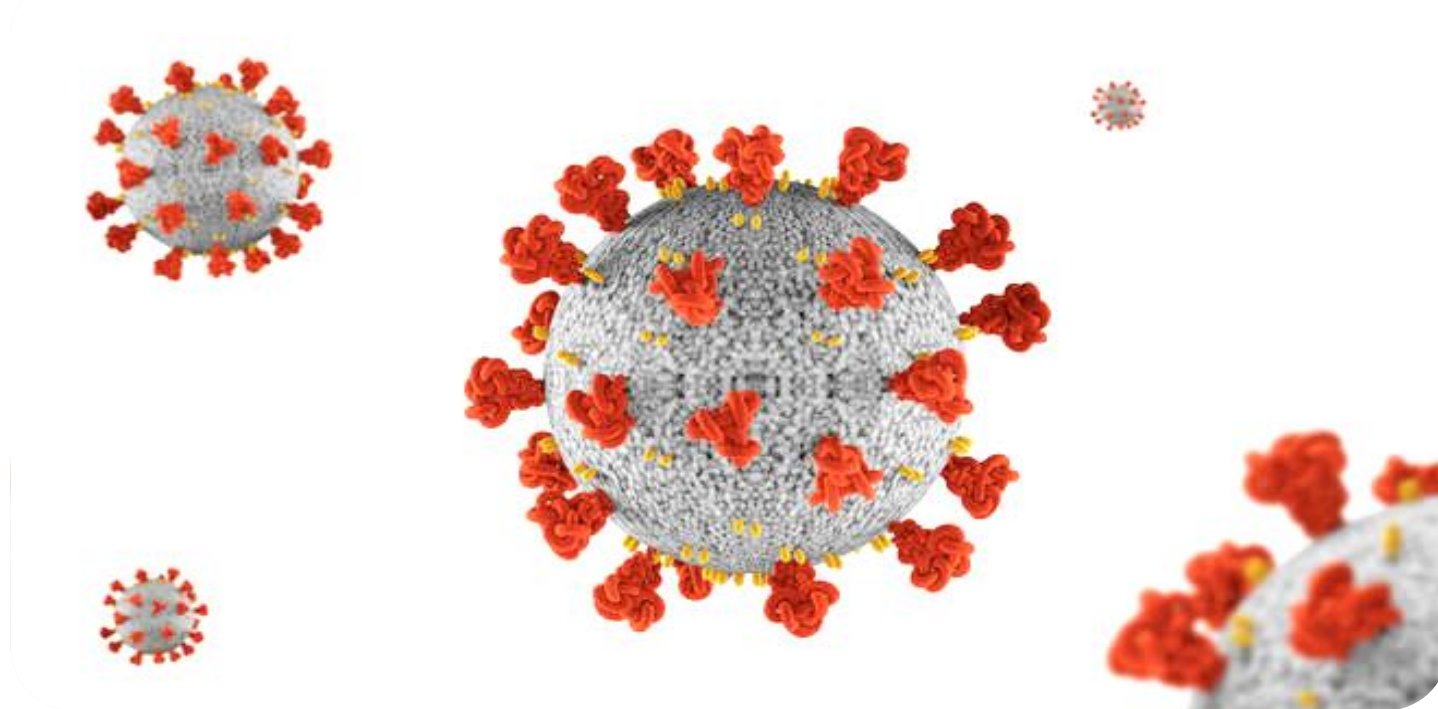
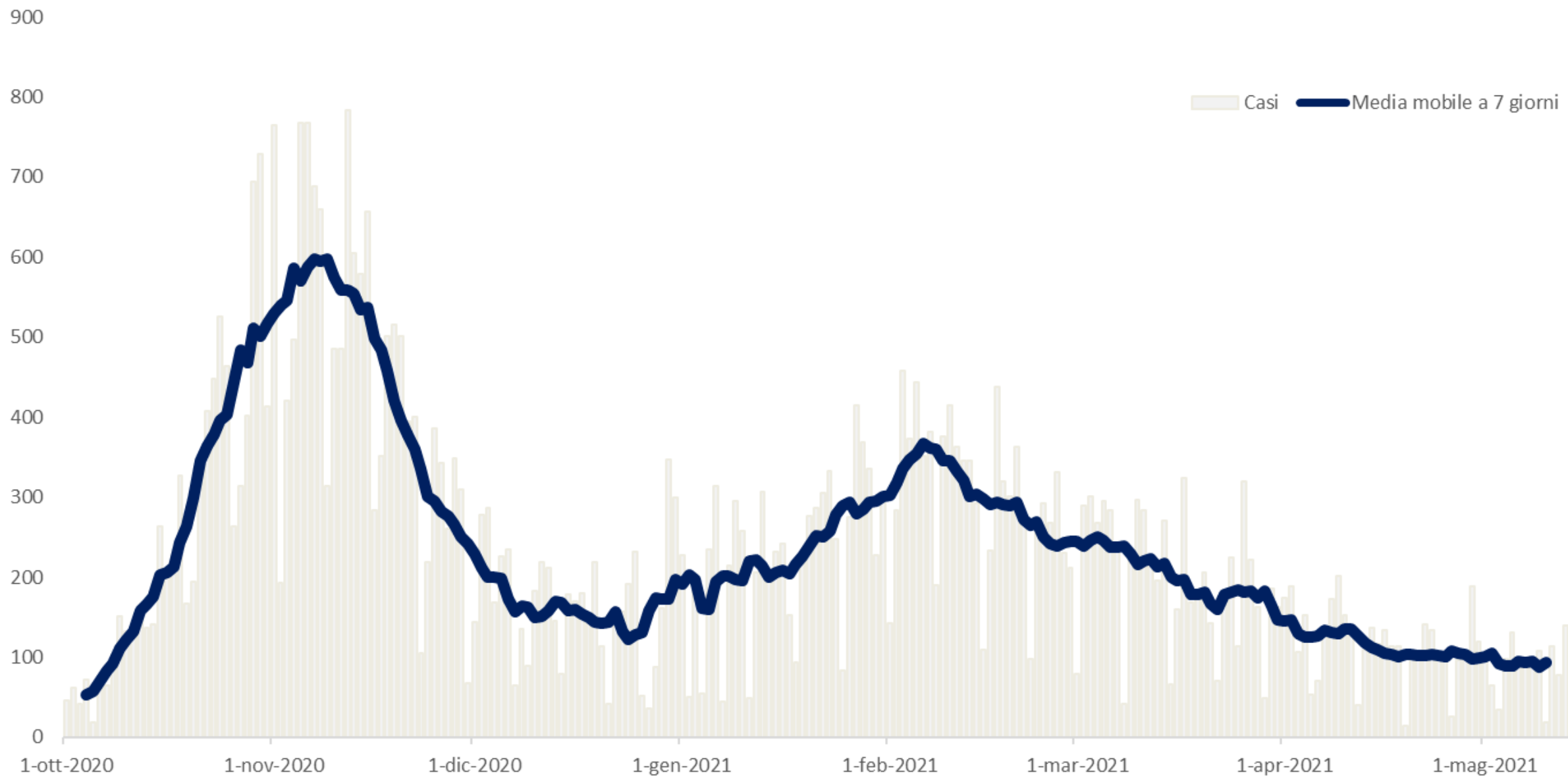


Analisi nucleo epidemiologico Sars- Cov 2 in Umbria

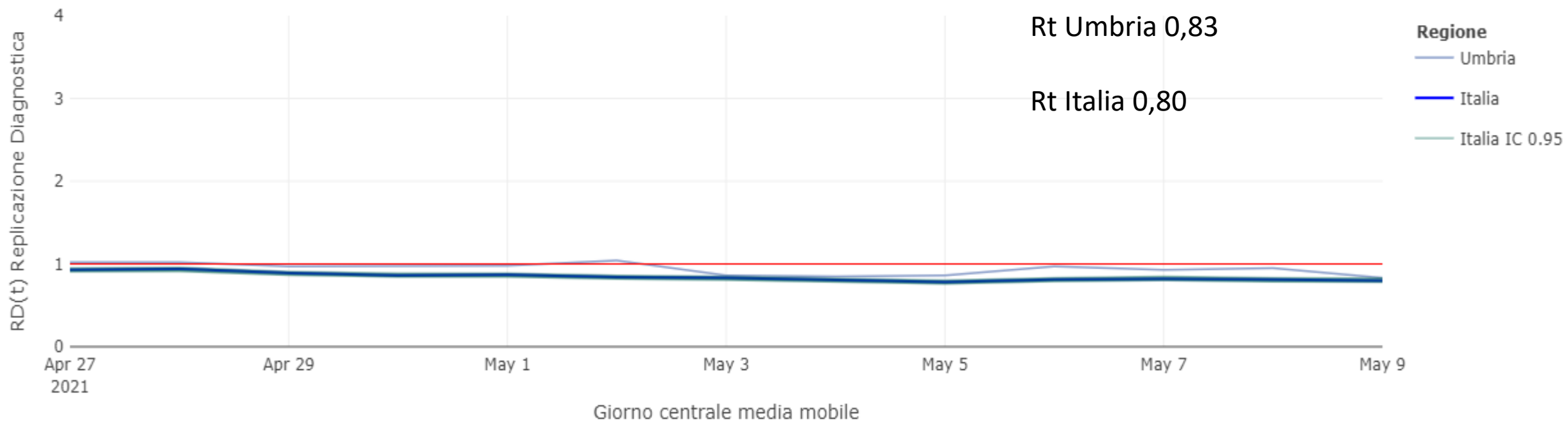


14 maggio 2021

Fonte dati integrata: DB COVID – Umbria Digitale



RD(t) Indice di Replicazione Diagnostica a lag 7 giorni (medie mobili a 7 giorni)



Perché il valore R_t è sempre in ritardo?

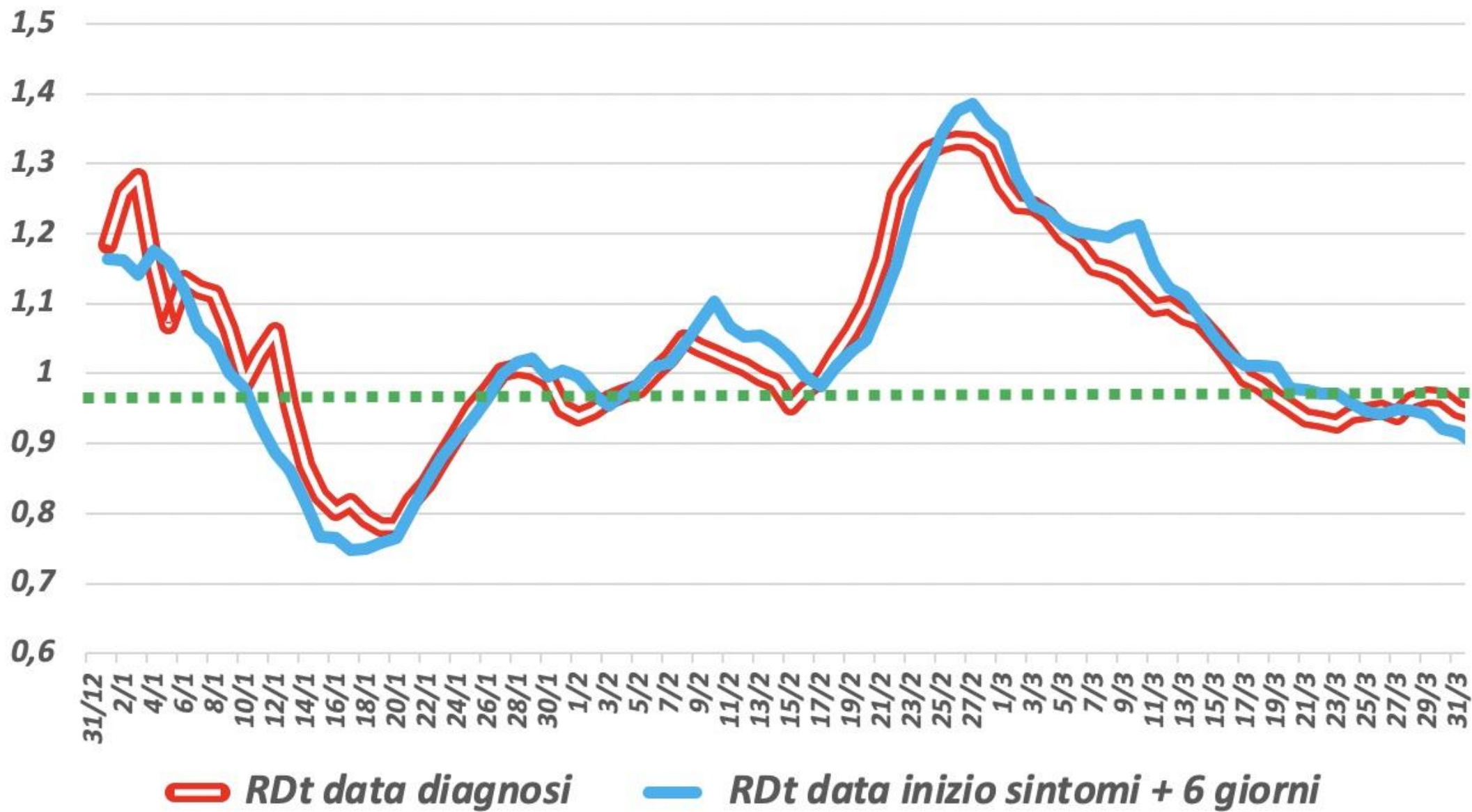


| <i>report</i> | <i>data</i> | <i>Rt</i> | <i>RDt</i> |
|---------------|----------------------|-------------|-------------|
| <i>numero</i> | <i>aggiornamento</i> | <i>ISS</i> | <i>MADE</i> |
| 34 | 5/1 | 1,03 | 1,07 |
| 35 | 13/1 | 1,09 | 0,95 |
| 36 | 20/1 | 0,97 | 0,78 |
| 37 | 27/1 | 0,84 | 1,00 |
| 38 | 3/2 | 0,84 | 0,96 |
| 39 | 10/2 | 0,95 | 1,03 |
| 40 | 17/2 | 0,99 | 0,99 |
| 41 | 24/2 | 0,99 | 1,32 |
| 42 | 3/3 | 1,06 | 1,24 |
| 43 | 10/3 | 1,16 | 1,12 |
| 44 | 17/3 | 1,16 | 0,99 |
| 45 | 24/3 | 1,08 | 0,94 |
| 46 | 31/3 | 0,98 | 0,95 |
| 47 | 7/4 | 0,92 | 0,75 |
| 48 | 14/4 | 0,85 | 1,00 |
| 49 | 21/4 | 0,81 | 0,89 |
| 50 | 28/4 | 0,85 | 0,93 |

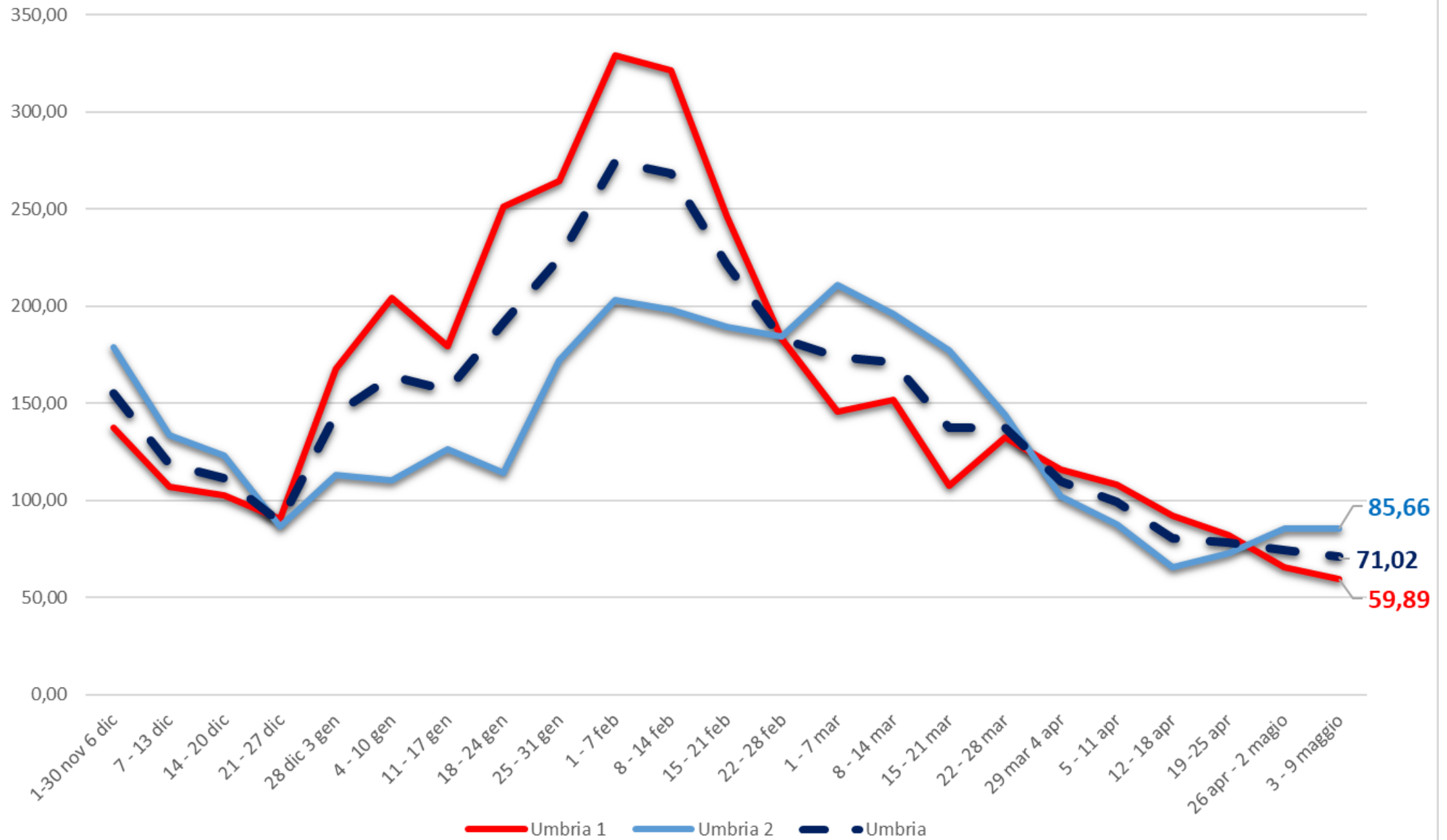
confronto Rt dell'ISS e RDt di MADE



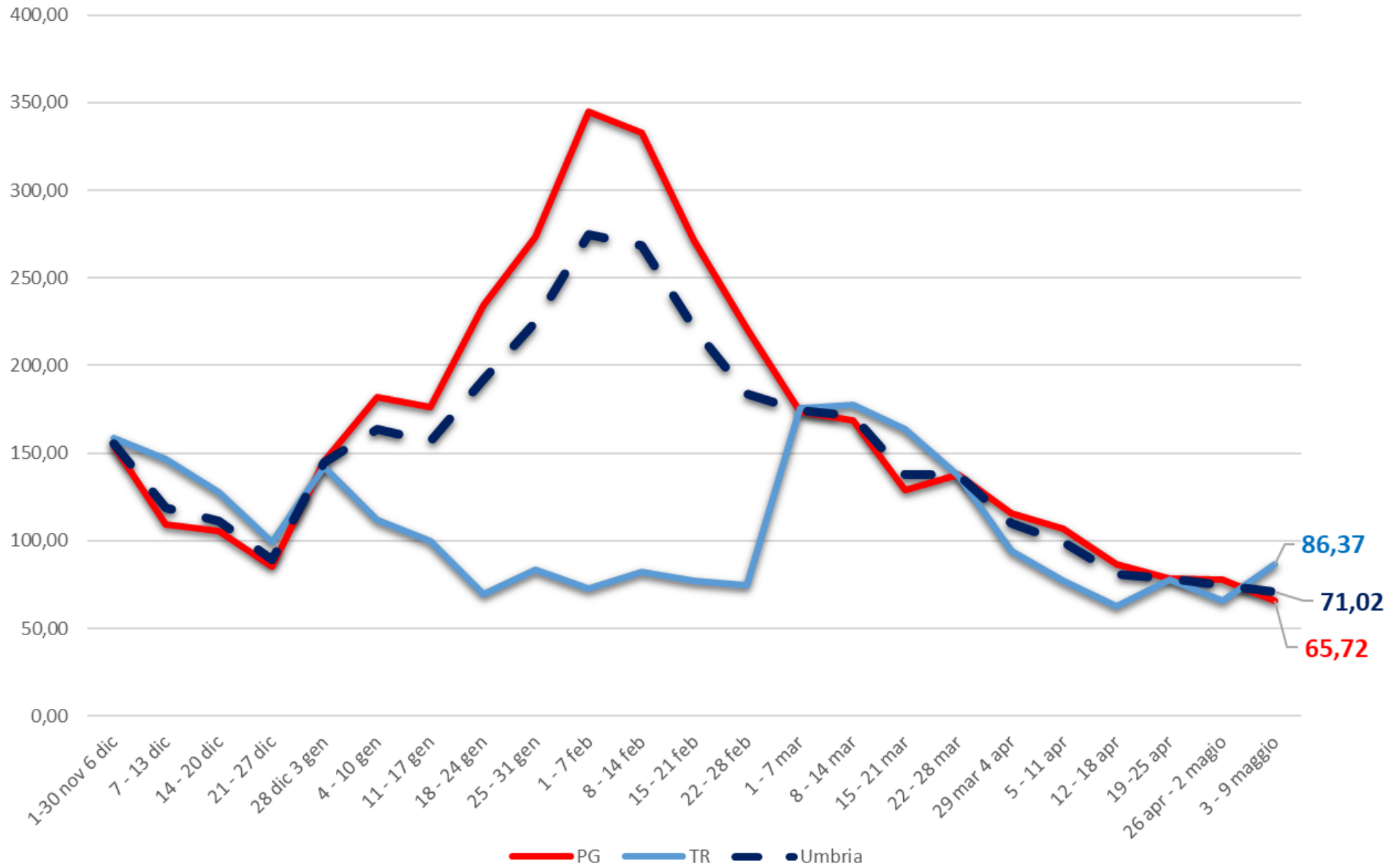
Confronto tra RDt data diagnosi e RDt data inizio sintomi + 6 gg



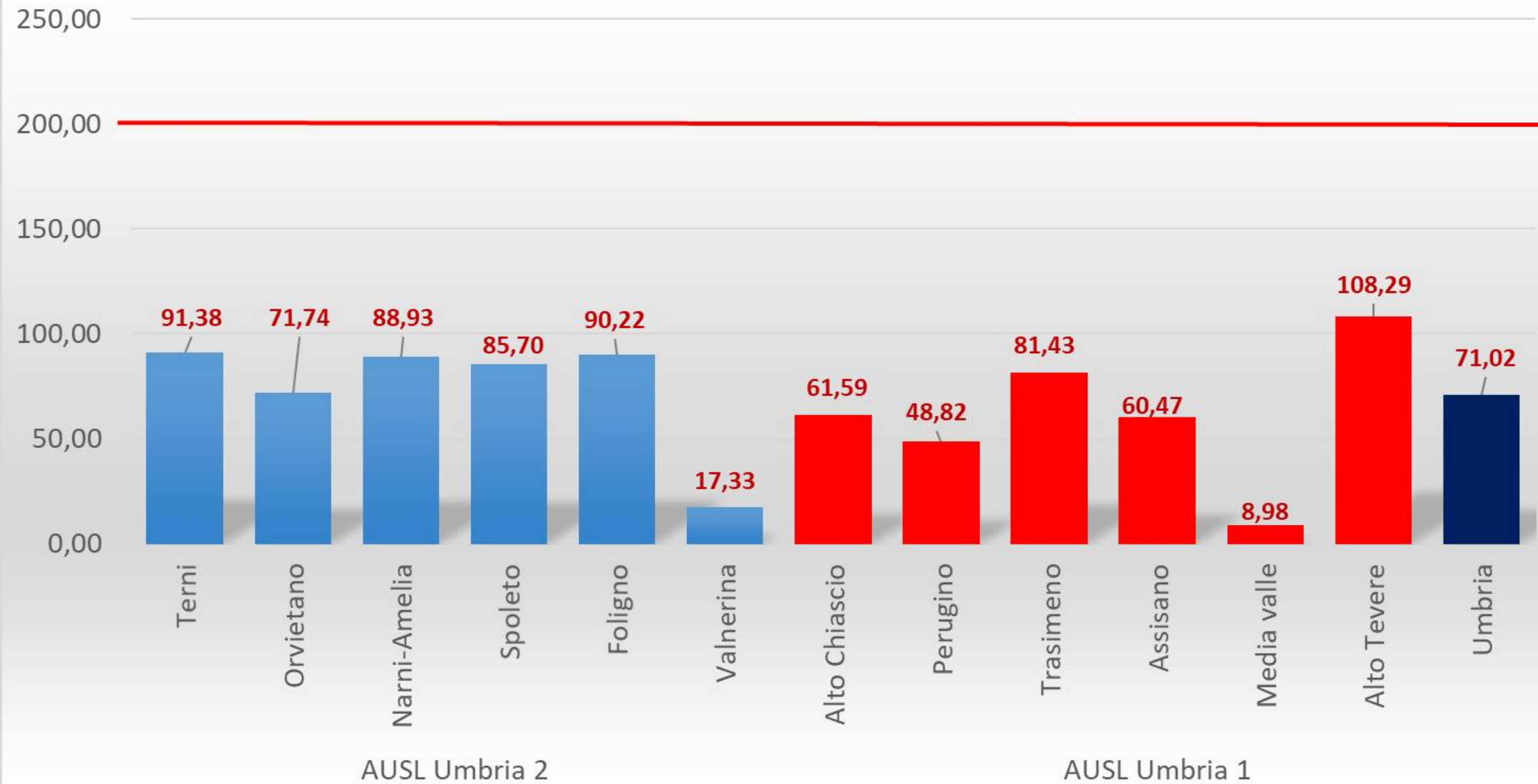
AUSL incidenza settimanale per 100.000 abitanti

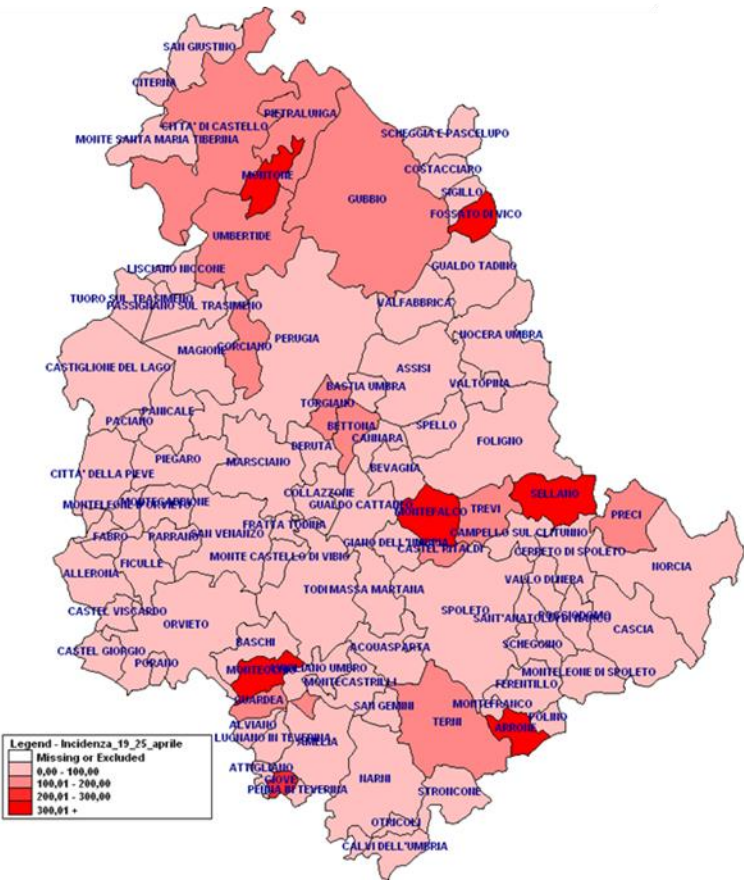


Province incidenza settimanale per 100.000 abitanti

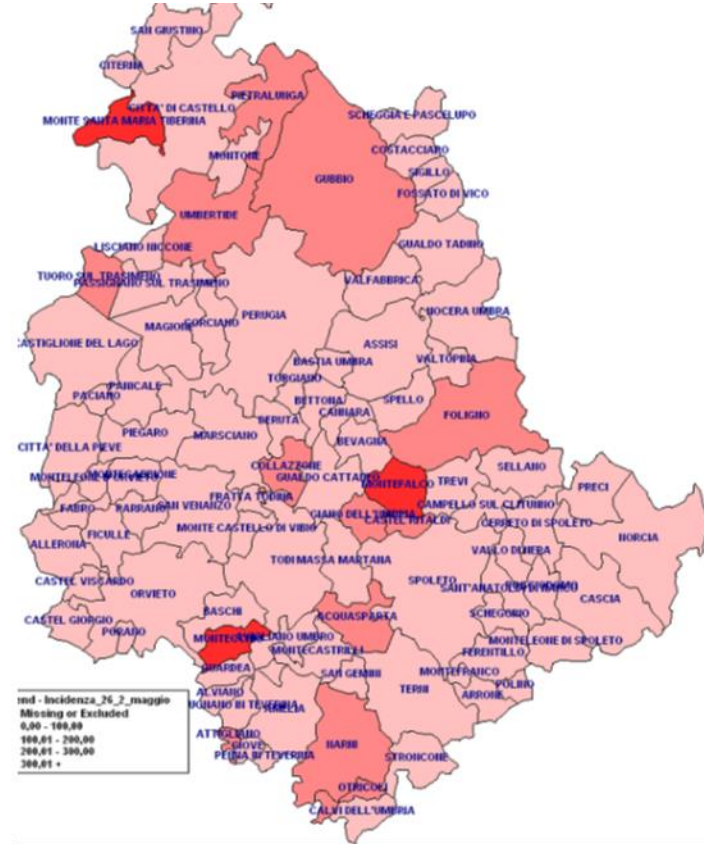


Incidenza settimanale per 100.000 abitanti per distretto sanitario

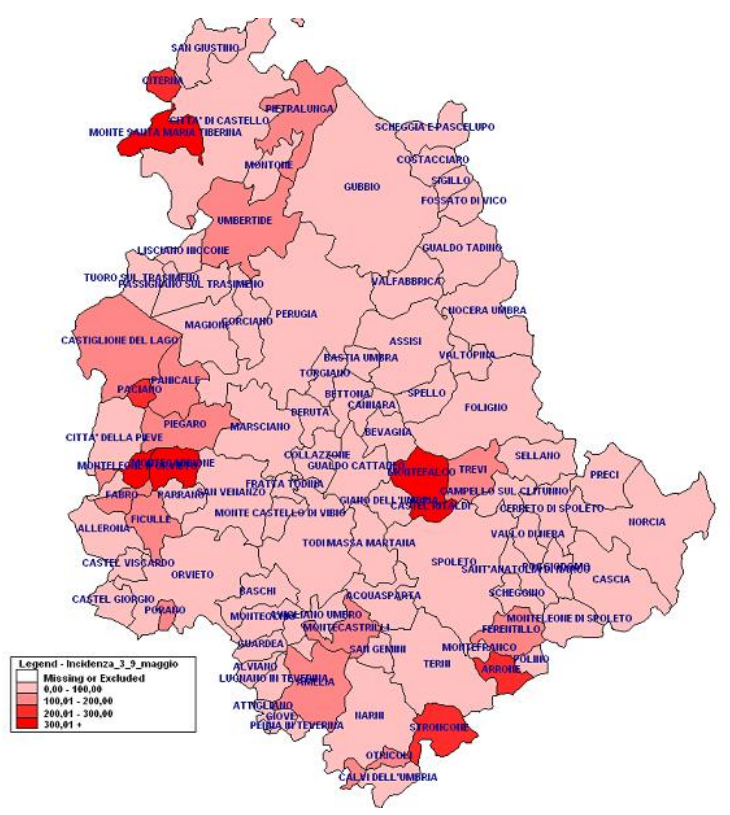




78,26

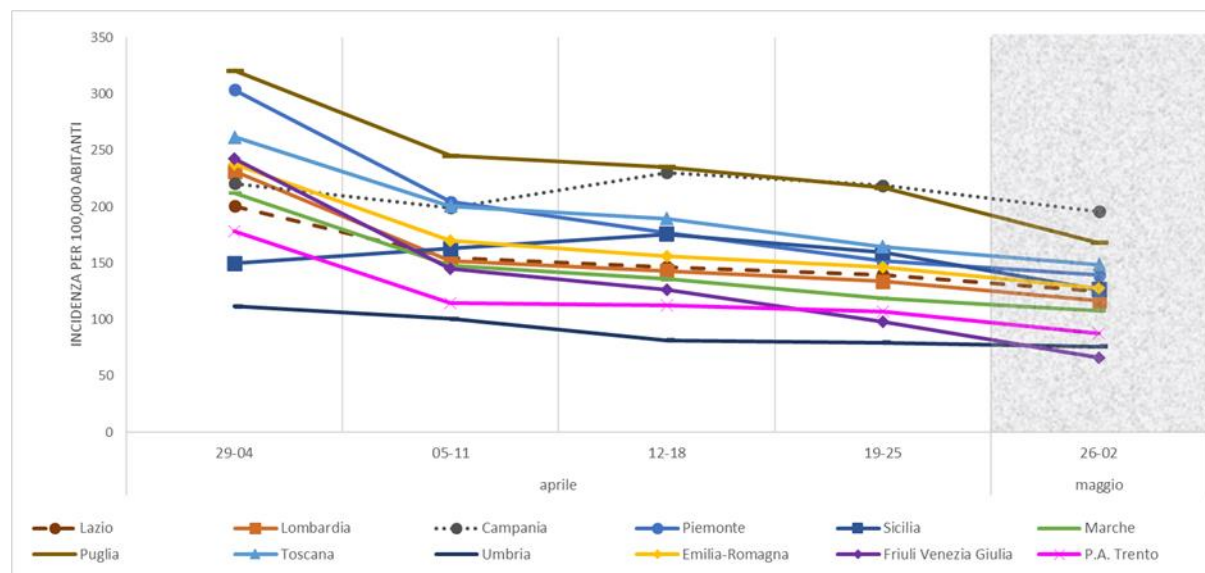
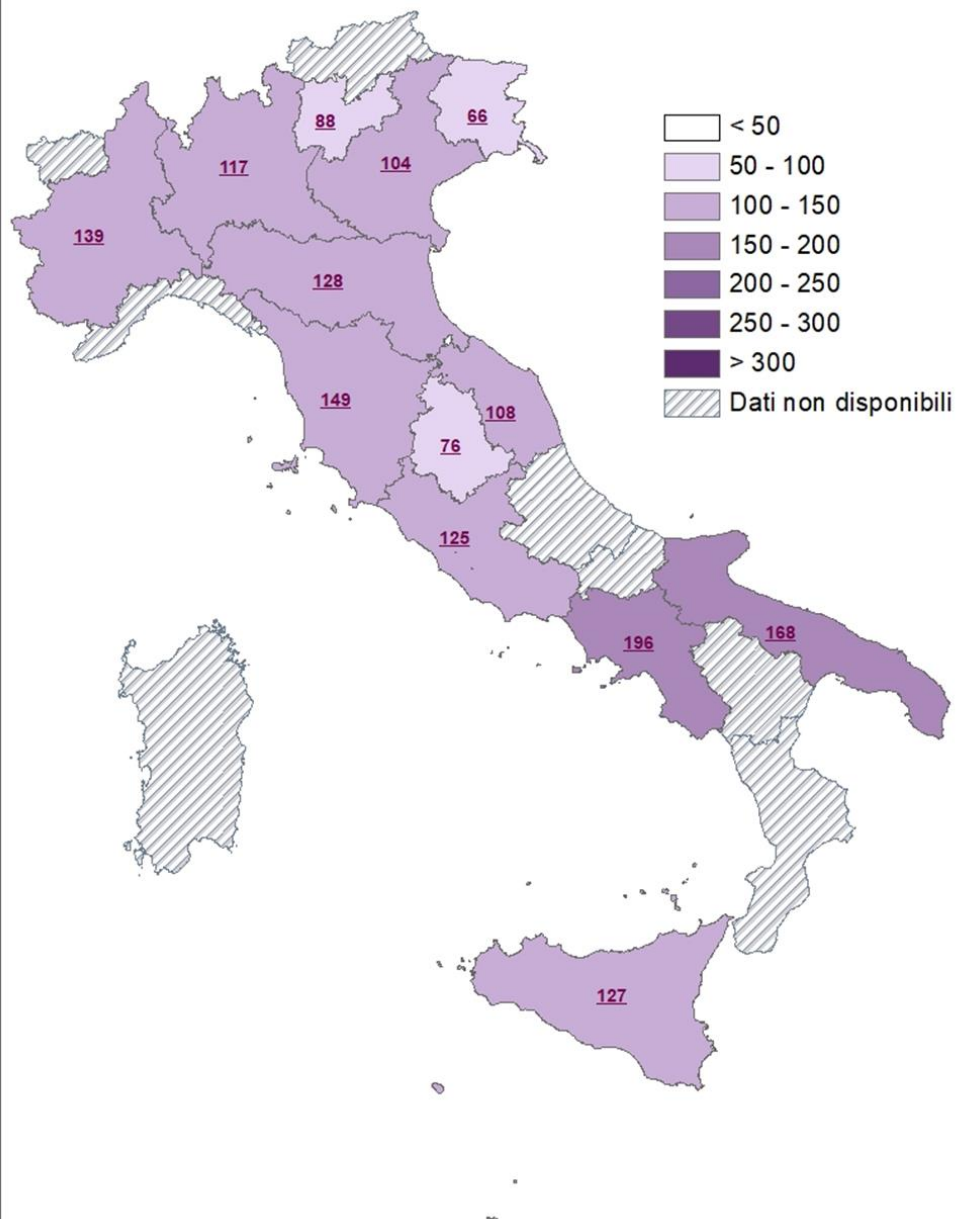


74,47

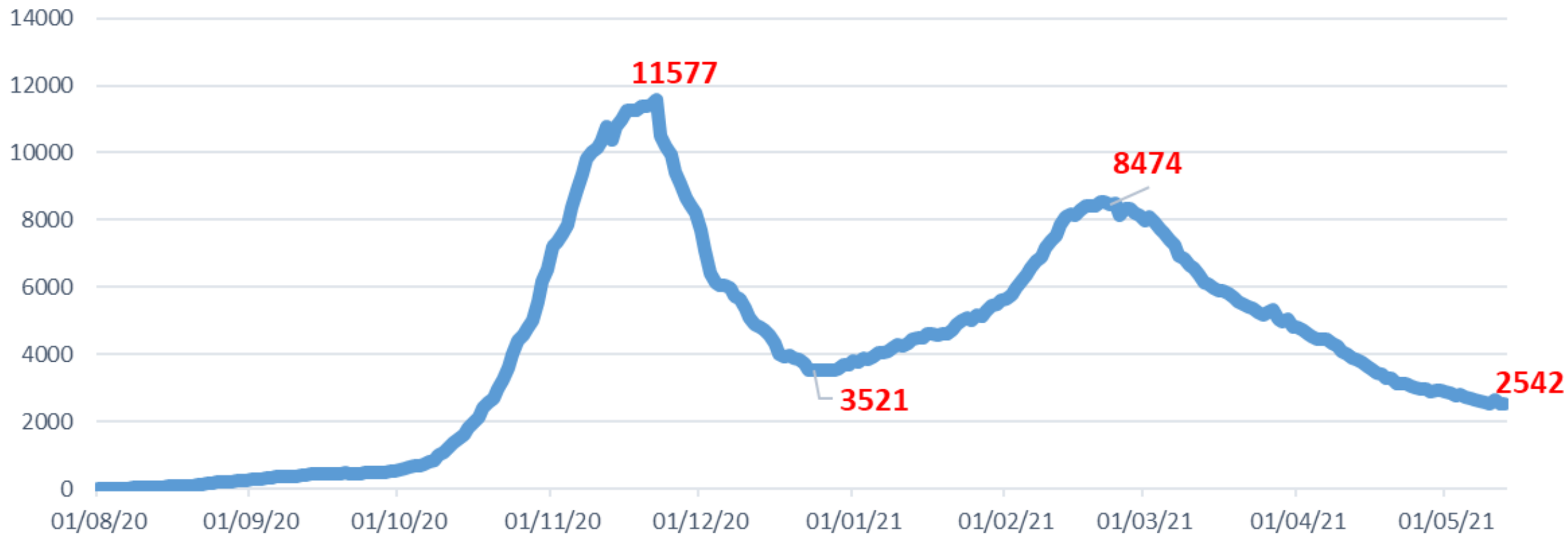


71,02

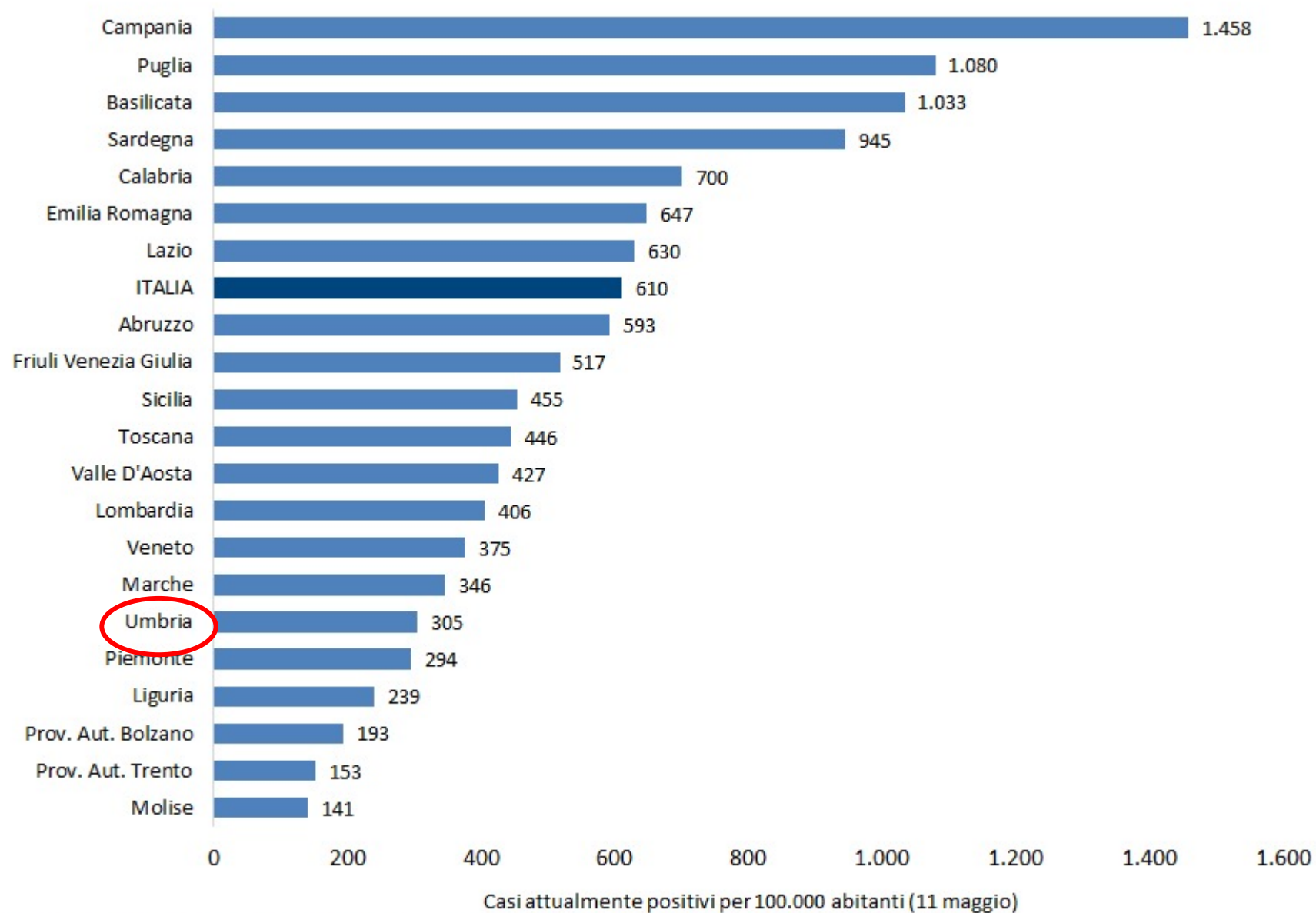
Tasso di incidenza settimanale COVID-19, standardizzato per età, per 100.000 abitanti, nelle 12 regioni e nella P.A. di Trento 26 aprile - 02 maggio



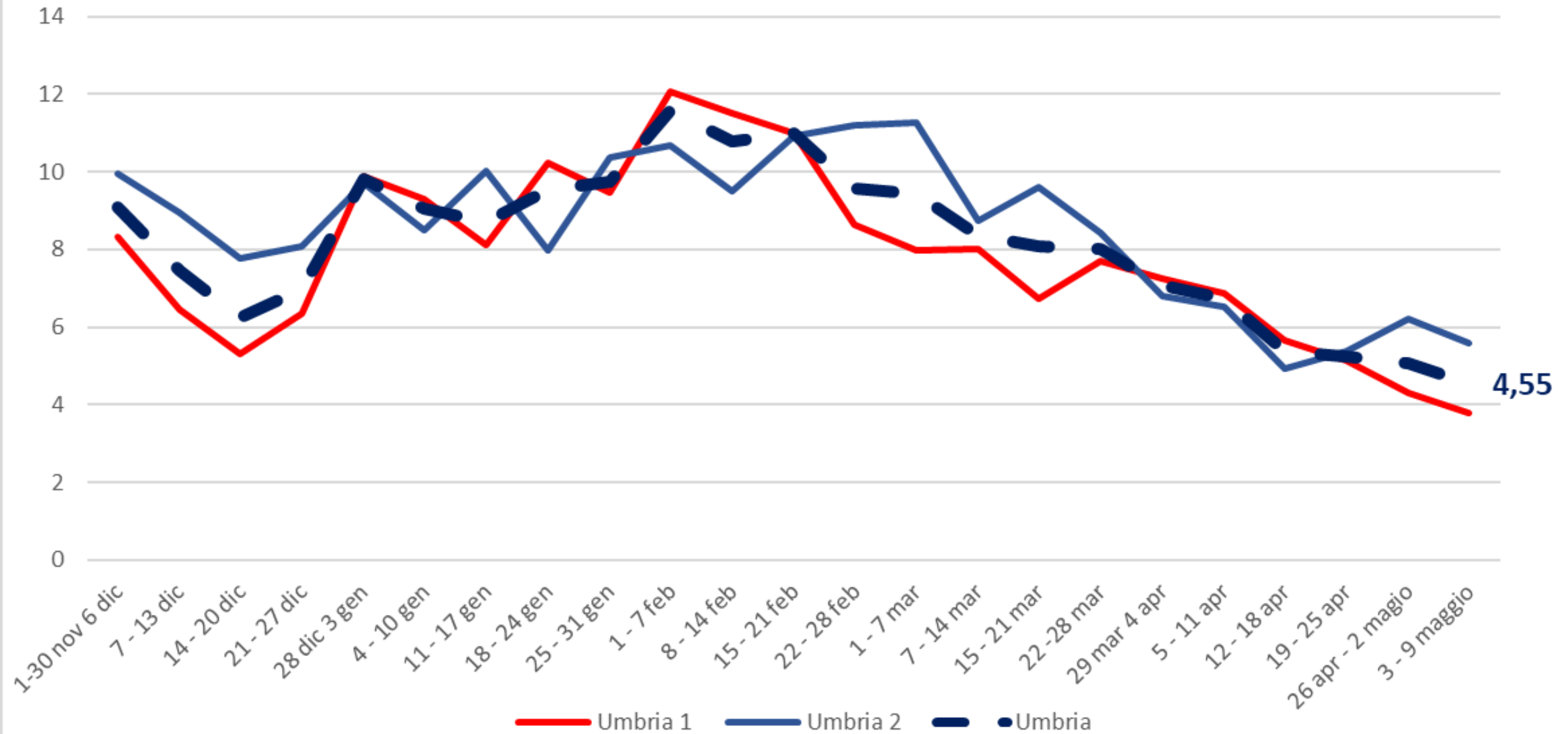
Andamento attualmente positivi



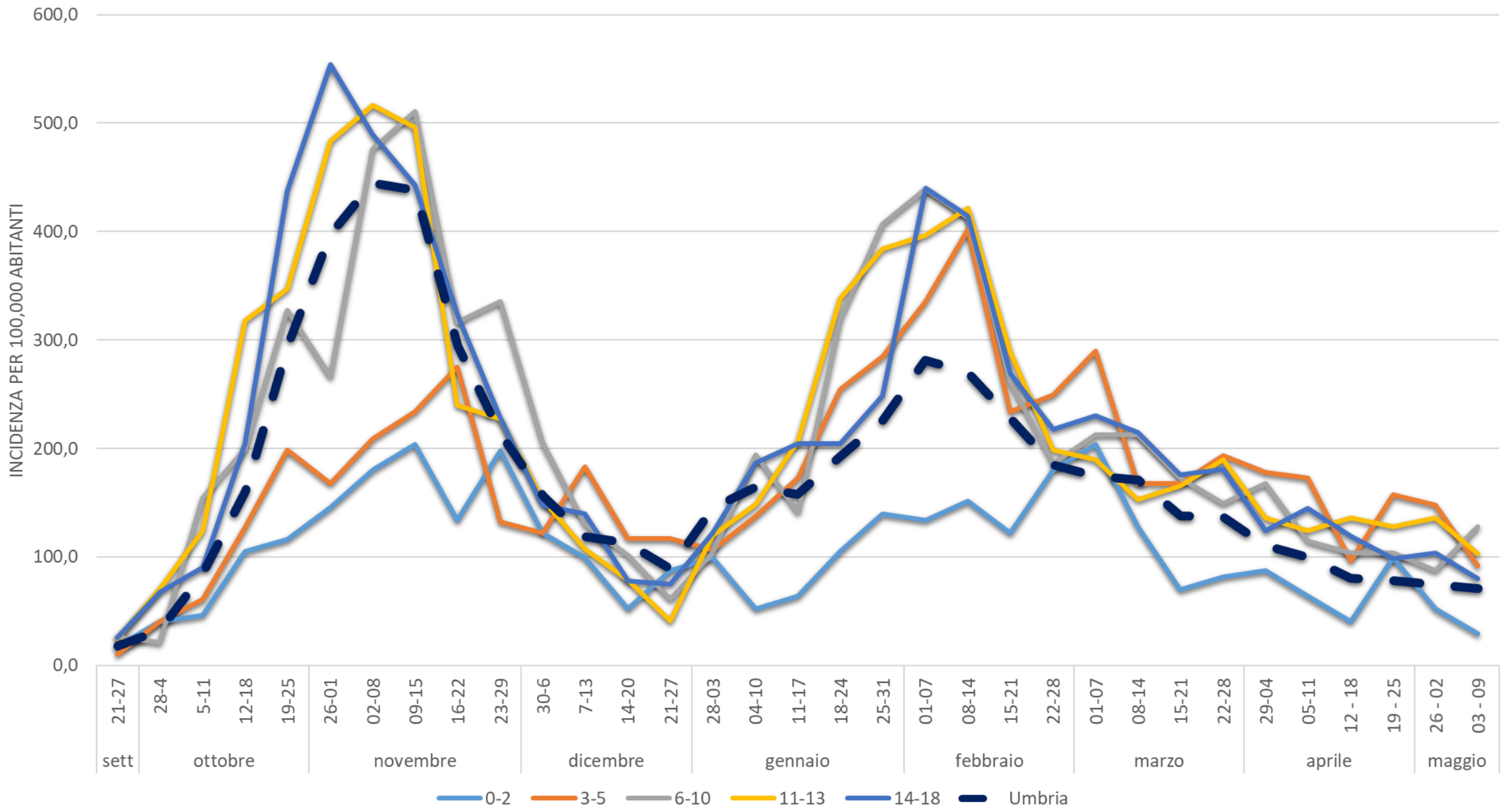
Prevalenza positivi per 100.000 abitanti



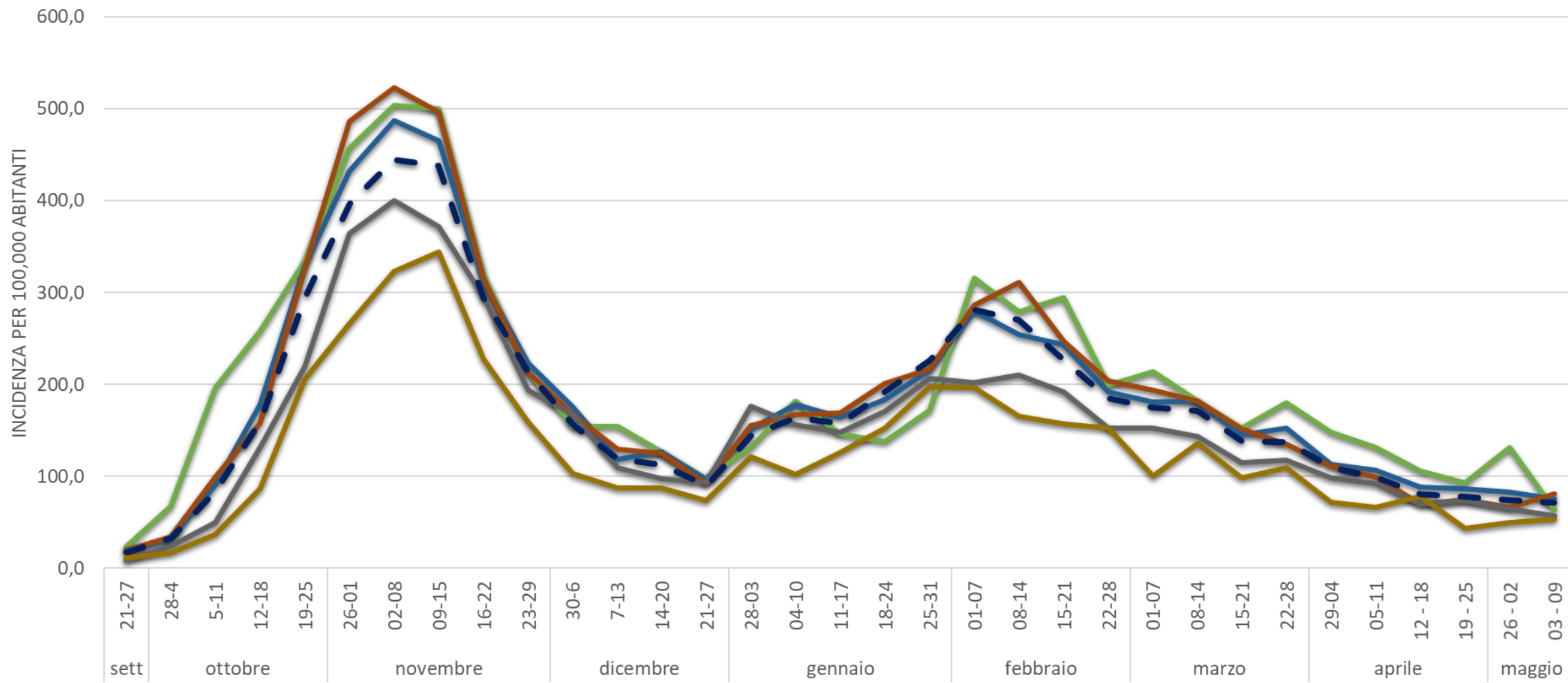
Rapporto Positivi/Tamponi per AUSL



UMBRIA incidenza settimanale per 100.000 abitanti 0 – 18 anni



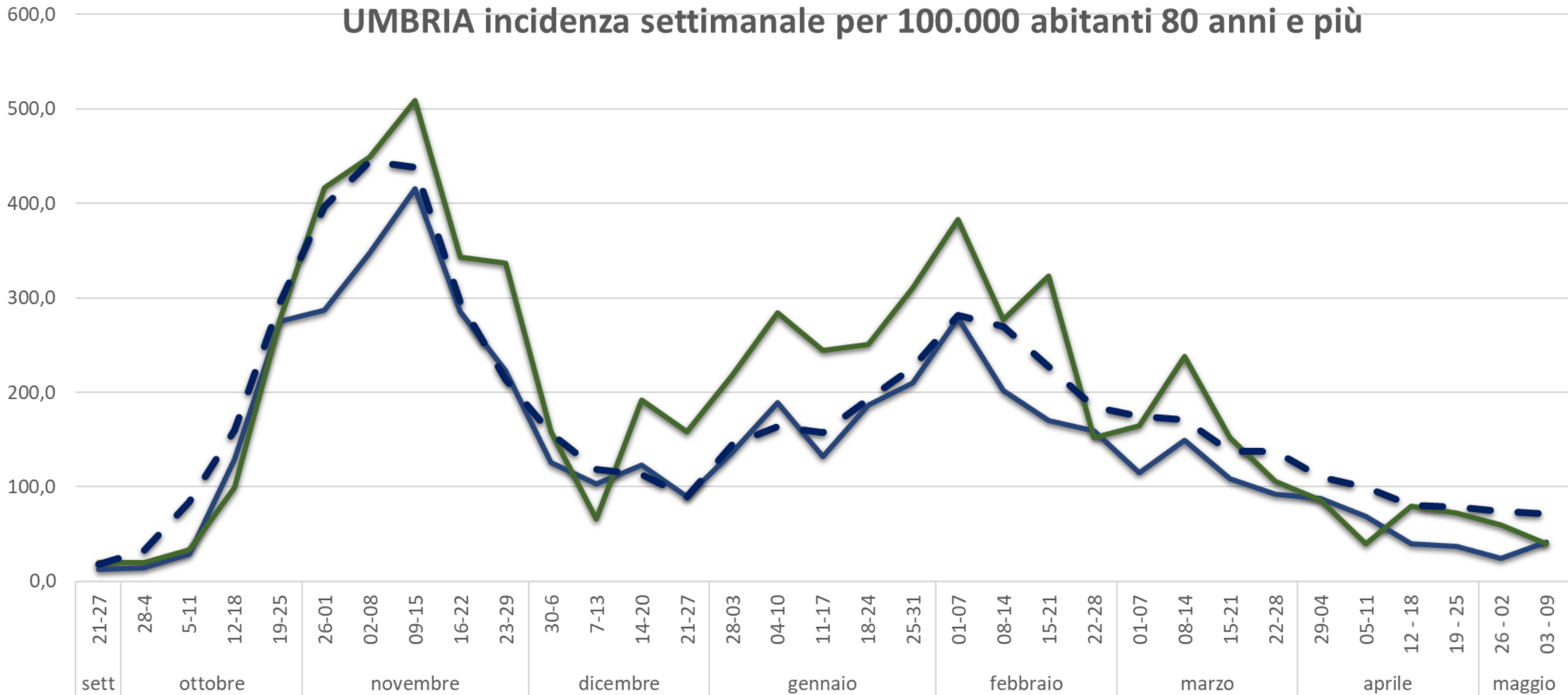
UMBRIA incidenza settimanale per 100.000 abitanti 19 – 79 anni



— 19-24
 — 25-44
 — 45-59
 — 60-69
 — 70-79
 —•— Umbria

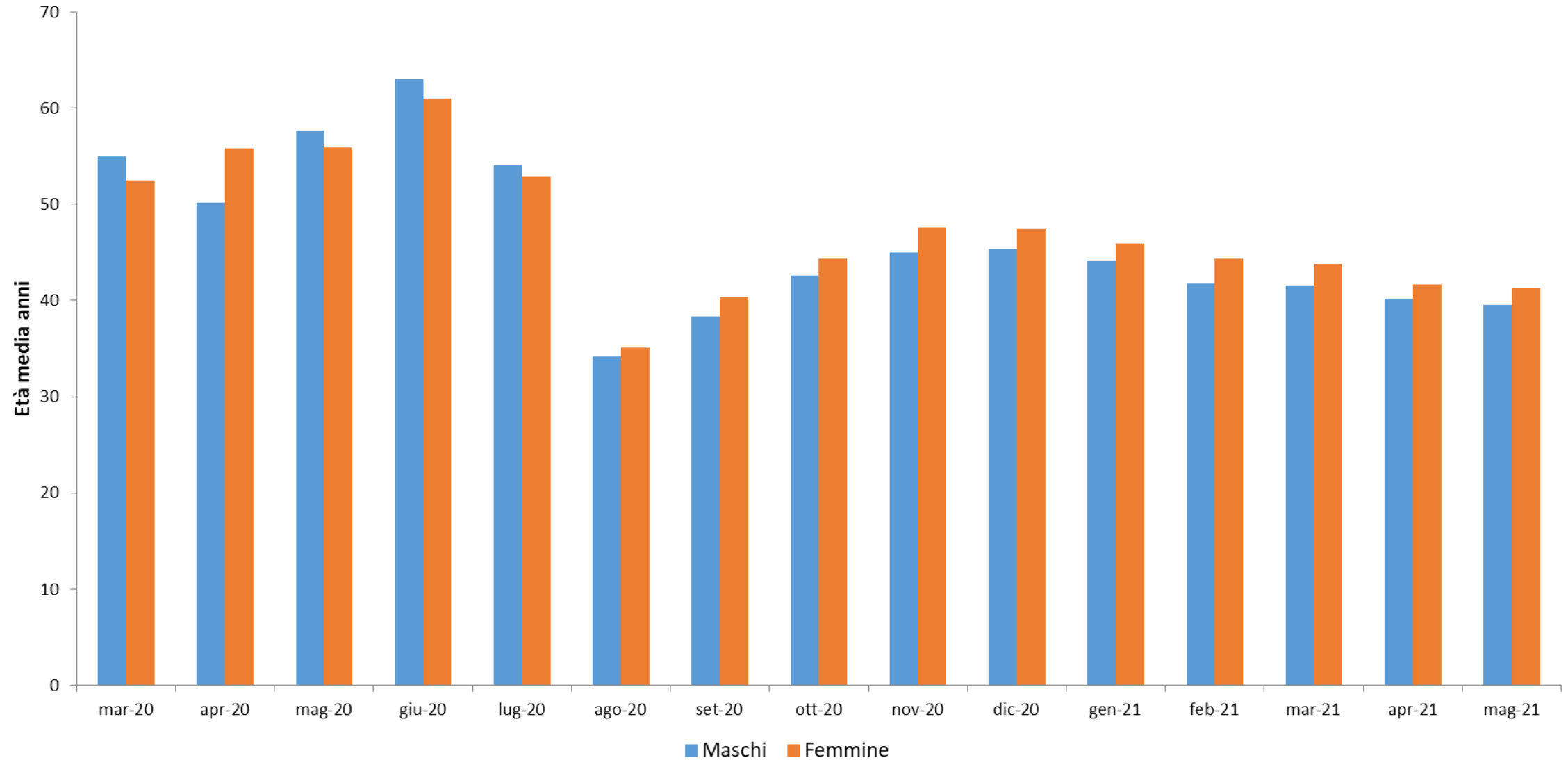
UMBRIA incidenza settimanale per 100.000 abitanti 80 anni e più

INCIDENZA PER 100,000 ABITANTI



80-89 90+ Umbria

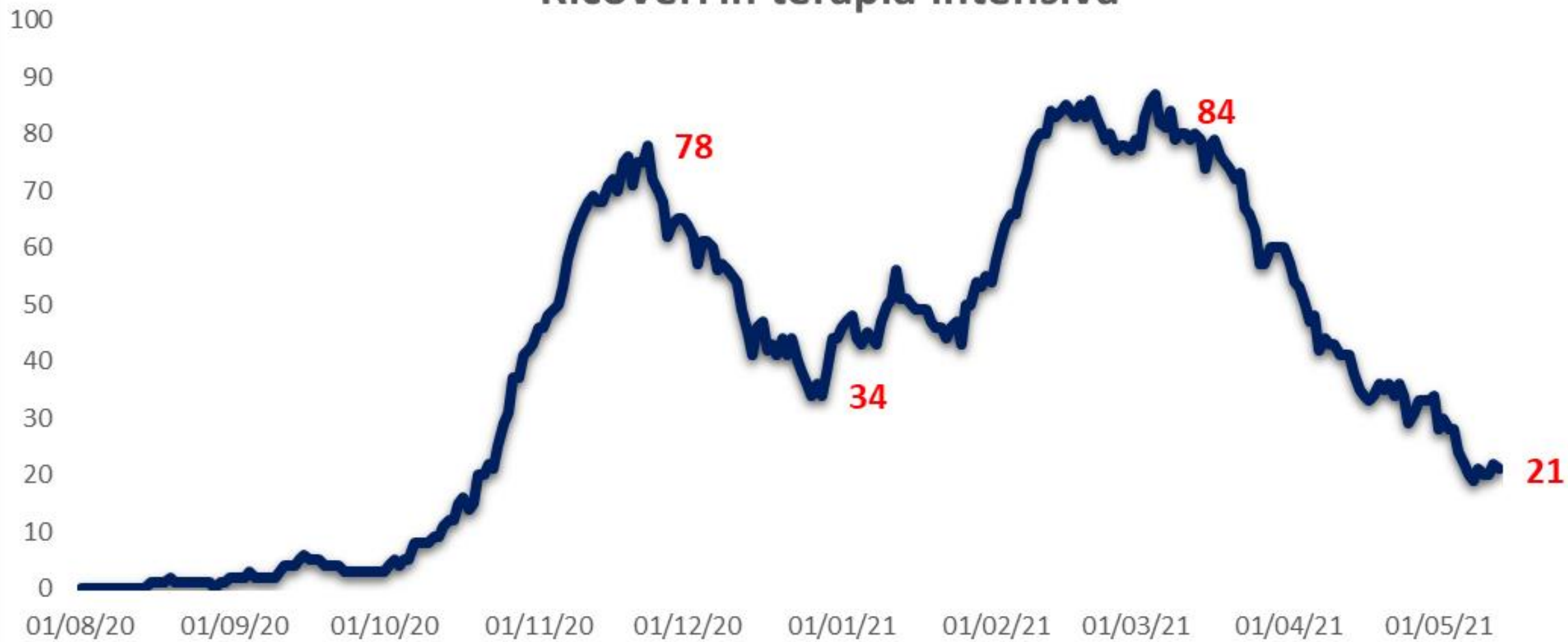
Andamento mensile età media dei casi positivi per genere



Ricoveri ordinari



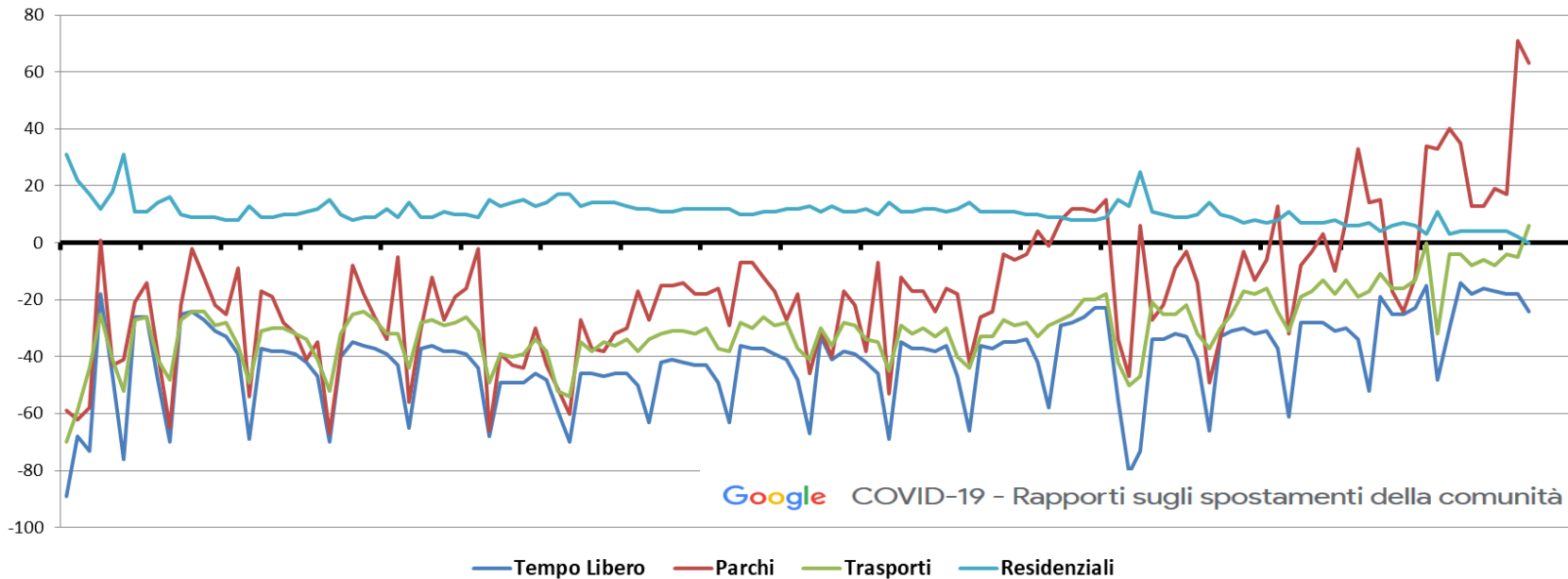
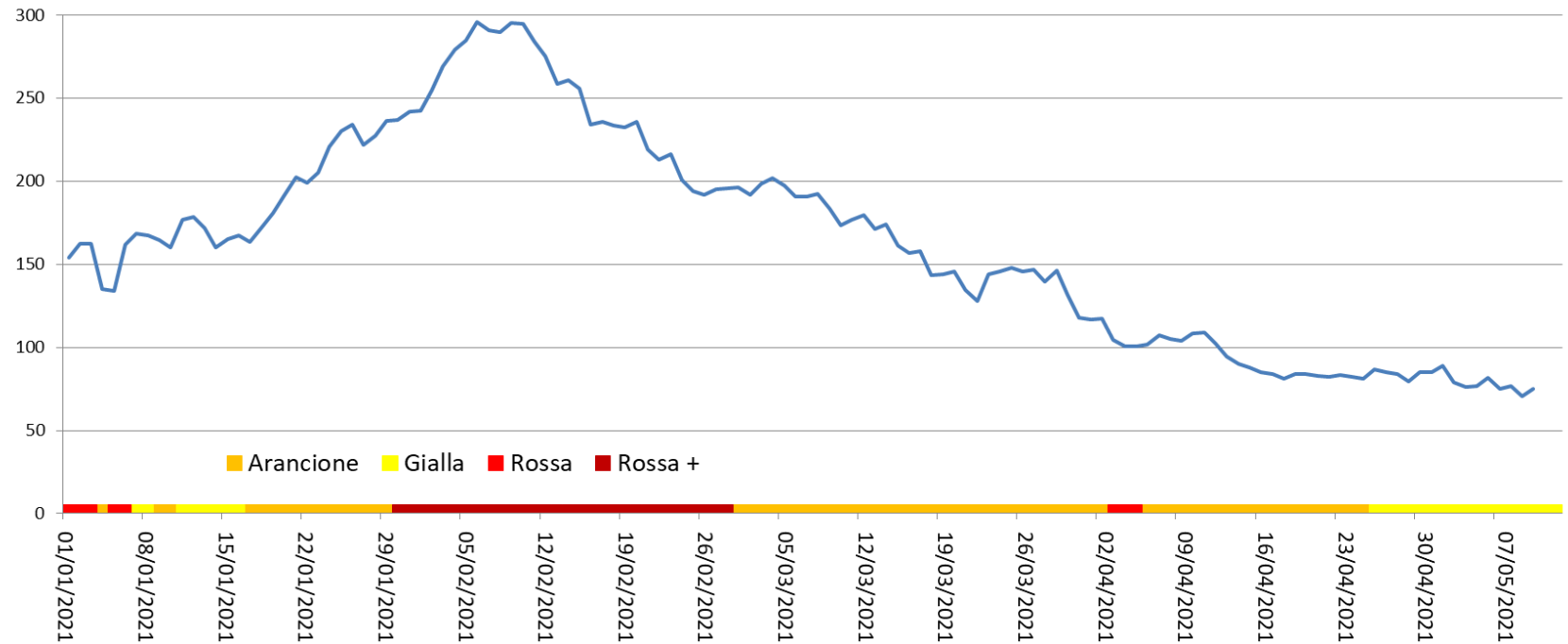
Ricoveri in terapia intensiva



Decessi



Tasso di incidenza settimanale mobile per 100.000 abitanti - UMBRIA



Andamento casi positivi e temperature - Umbria

